

ACAT1 Antibody (aa221-270)
Rabbit Polyclonal Antibody
Catalog # ALS14464**Specification**

ACAT1 Antibody (aa221-270) - Product Information

Application	WB, IHC
Primary Accession	P24752
Reactivity	Human, Mouse, Rat
Host	Rabbit
Clonality	Polyclonal
Calculated MW	45kDa KDa

ACAT1 Antibody (aa221-270) - Additional Information**Gene ID 38****Other Names**

Acetyl-CoA acetyltransferase, mitochondrial, 2.3.1.9, Acetoacetyl-CoA thiolase, T2, ACAT1, ACAT, MAT

Target/Specificity

ACAT1 Antibody detects endogenous levels of total ACAT1 protein.

Reconstitution & Storage

Short term 4°C, long term aliquot and store at -20°C, avoid freeze thaw cycles.

Precautions

ACAT1 Antibody (aa221-270) is for research use only and not for use in diagnostic or therapeutic procedures.

ACAT1 Antibody (aa221-270) - Protein Information**Name** ACAT1**Synonyms** ACAT, MAT**Function**

This is one of the enzymes that catalyzes the last step of the mitochondrial beta-oxidation pathway, an aerobic process breaking down fatty acids into acetyl-CoA (PubMed: [1715688](http://www.uniprot.org/citations/1715688), PubMed: [7728148](http://www.uniprot.org/citations/7728148), PubMed: [9744475](http://www.uniprot.org/citations/9744475)). Using free coenzyme A/CoA, catalyzes the thiolytic cleavage of medium- to long-chain 3-oxoacyl-CoAs into acetyl-CoA and a fatty acyl-CoA shortened by two carbon atoms (PubMed: [1715688](http://www.uniprot.org/citations/1715688), PubMed: [7728148](http://www.uniprot.org/citations/7728148), PubMed: [9744475](http://www.uniprot.org/citations/9744475)). The activity of

the enzyme is reversible and it can also catalyze the condensation of two acetyl-CoA molecules into acetoacetyl-CoA (PubMed:17371050). Thereby, it plays a major role in ketone body metabolism (PubMed:1715688, PubMed:17371050, PubMed:7728148, PubMed:9744475).

Cellular Location

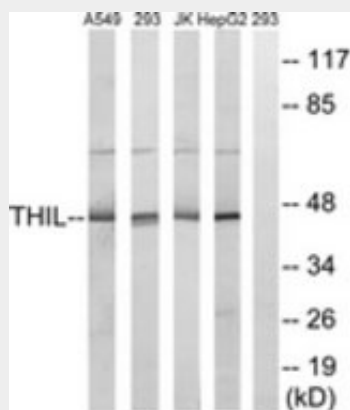
Mitochondrion.

ACAT1 Antibody (aa221-270) - Protocols

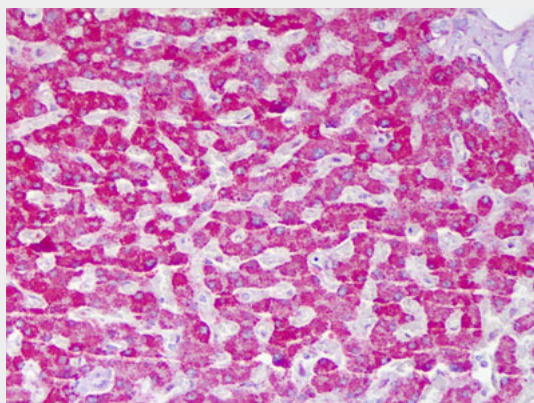
Provided below are standard protocols that you may find useful for product applications.

- [Western Blot](#)
- [Blocking Peptides](#)
- [Dot Blot](#)
- [Immunohistochemistry](#)
- [Immunofluorescence](#)
- [Immunoprecipitation](#)
- [Flow Cytometry](#)
- [Cell Culture](#)

ACAT1 Antibody (aa221-270) - Images



Western blot of extracts from HepG2/Jurkat/293/A549 cells, using ALS14464.



Anti-ACAT1 antibody IHC of human liver, hepatocytes.

ACAT1 Antibody (aa221-270) - Background

Plays a major role in ketone body metabolism.

ACAT1 Antibody (aa221-270) - References

Fukao T.,et al.J. Clin. Invest. 86:2086-2092(1990).
Kano M.,et al.Gene 109:285-290(1991).
Ota T.,et al.Nat. Genet. 36:40-45(2004).
Taylor T.D.,et al.Nature 440:497-500(2006).
Mural R.J.,et al.Submitted (JUL-2005) to the EMBL/GenBank/DDBJ databases.