

PTTG1IP Antibody (aa116-165)
Rabbit Polyclonal Antibody
Catalog # ALS14463

Specification

PTTG1IP Antibody (aa116-165) - Product Information

Application	WB, IHC
Primary Accession	P53801
Reactivity	Human, Mouse, Rat
Host	Rabbit
Clonality	Polyclonal
Calculated MW	20kDa KDa

PTTG1IP Antibody (aa116-165) - Additional Information

Gene ID 754

Other Names

Pituitary tumor-transforming gene 1 protein-interacting protein, Pituitary tumor-transforming gene protein-binding factor, PBF, PTTG-binding factor, PTTG1IP, C21orf1, C21orf3

Target/Specificity

PTTG Antibody detects endogenous levels of total PTTG protein.

Reconstitution & Storage

Short term 4°C, long term aliquot and store at -20°C, avoid freeze thaw cycles.

Precautions

PTTG1IP Antibody (aa116-165) is for research use only and not for use in diagnostic or therapeutic procedures.

PTTG1IP Antibody (aa116-165) - Protein Information

Name PTTG1IP

Synonyms C21orf1, C21orf3

Function

May facilitate PTTG1 nuclear translocation.

Cellular Location

Membrane; Single-pass type I membrane protein. Cytoplasm. Nucleus Note=According to PubMed:10781616, it is found in the cytoplasm and the nucleus

Tissue Location

Ubiquitous.

Volume

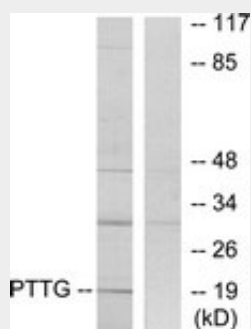
50 μ l

PTTG1IP Antibody (aa116-165) - Protocols

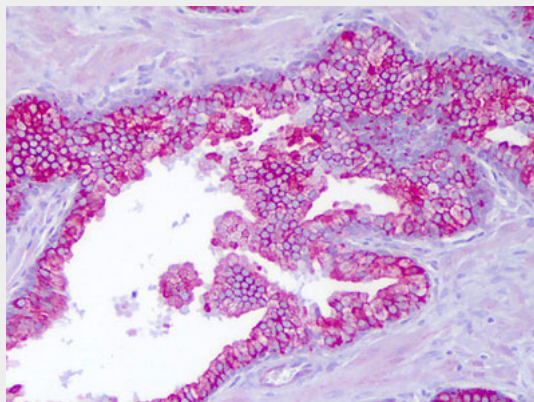
Provided below are standard protocols that you may find useful for product applications.

- [Western Blot](#)
- [Blocking Peptides](#)
- [Dot Blot](#)
- [Immunohistochemistry](#)
- [Immunofluorescence](#)
- [Immunoprecipitation](#)
- [Flow Cytometry](#)
- [Cell Culture](#)

PTTG1IP Antibody (aa116-165) - Images



Western blot of extracts from RAW264.7 cells, using ALS14463.



Anti-PTTG1IP antibody IHC of human prostate, epithelium.

PTTG1IP Antibody (aa116-165) - Background

May facilitate PTTG1 nuclear translocation.

PTTG1IP Antibody (aa116-165) - References

- Yaspo M.-L., et al. *Genomics* 49:133-136(1998).
Chien W., et al. *J. Biol. Chem.* 275:19422-19427(2000).
Ota T., et al. *Nat. Genet.* 36:40-45(2004).
Hattori M., et al. *Nature* 405:311-319(2000).

Mural R.J., et al. Submitted (SEP-2005) to the EMBL/GenBank/DDBJ databases.