

RPS6 / S6 Antibody (aa191-240)
Rabbit Polyclonal Antibody
Catalog # ALS14460

Specification

RPS6 / S6 Antibody (aa191-240) - Product Information

Application	IF, WB, IHC
Primary Accession	P62753
Reactivity	Human, Mouse, Rat
Host	Rabbit
Clonality	Polyclonal
Calculated MW	29kDa KDa

RPS6 / S6 Antibody (aa191-240) - Additional Information

Gene ID 6194

Other Names

40S ribosomal protein S6, Phosphoprotein NP33, RPS6

Target/Specificity

Detects endogenous levels of total S6 Ribosomal Protein protein.

Reconstitution & Storage

Store at -20°C for up to one year.

Precautions

RPS6 / S6 Antibody (aa191-240) is for research use only and not for use in diagnostic or therapeutic procedures.

RPS6 / S6 Antibody (aa191-240) - Protein Information

Name RPS6 {ECO:0000303|PubMed:29563586, ECO:0000312|HGNC:HGNC:10429}

Function

Component of the 40S small ribosomal subunit (PubMed:23636399, PubMed:8706699). Plays an important role in controlling cell growth and proliferation through the selective translation of particular classes of mRNA (PubMed:17220279). Part of the small subunit (SSU) processome, first precursor of the small eukaryotic ribosomal subunit. During the assembly of the SSU processome in the nucleolus, many ribosome biogenesis factors, an RNA chaperone and ribosomal proteins associate with the nascent pre-rRNA and work in concert to generate RNA folding, modifications, rearrangements and cleavage as well as targeted degradation of pre-ribosomal RNA by the RNA exosome (PubMed:34516797).

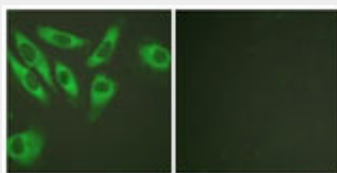
Cellular Location

Cytoplasm. Nucleus, nucleolus

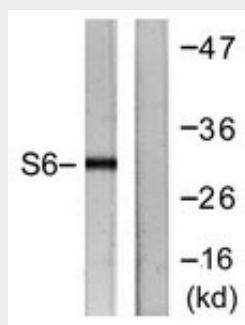
Volume50 μ l**RPS6 / S6 Antibody (aa191-240) - Protocols**

Provided below are standard protocols that you may find useful for product applications.

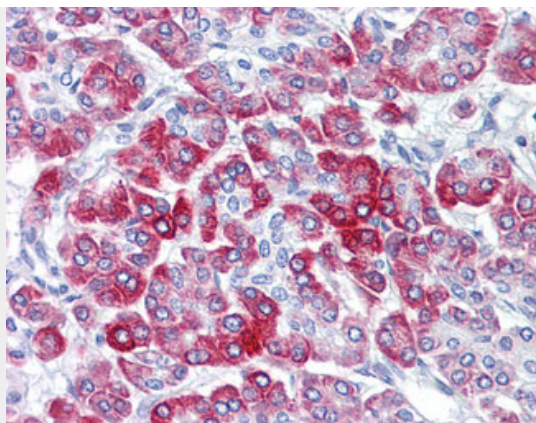
- [Western Blot](#)
- [Blocking Peptides](#)
- [Dot Blot](#)
- [Immunohistochemistry](#)
- [Immunofluorescence](#)
- [Immunoprecipitation](#)
- [Flow Cytometry](#)
- [Cell Culture](#)

RPS6 / S6 Antibody (aa191-240) - Images

Immunofluorescence of HeLa cells, using S6 Ribosomal Protein (Ab-240) Antibody.



Western blot of extracts from HeLa cells, treated with TNF-a 20 ng/ml 2', using antibody ALS14460.



Anti-RPS6 antibody IHC of human pancreas.

RPS6 / S6 Antibody (aa191-240) - Background

May play an important role in controlling cell growth and proliferation through the selective translation of particular classes of mRNA.

RPS6 / S6 Antibody (aa191-240) - References

- Lott J.B.,et al.Gene 65:31-39(1988).
- Heinze H.,et al.J. Biol. Chem. 263:4139-4144(1988).
- Antoine M.,et al.Hum. Mol. Genet. 1:565-570(1992).
- Pata I.,et al.Gene 121:387-392(1992).
- Shichijo S.,et al.Submitted (MAY-2001) to the EMBL/GenBank/DDBJ databases.