

CCNE1 / Cyclin E1 Antibody (aa91-140)
Rabbit Polyclonal Antibody
Catalog # ALS14458

Specification

CCNE1 / Cyclin E1 Antibody (aa91-140) - Product Information

Application	IF, WB, IHC
Primary Accession	P24864
Reactivity	Human, Mouse, Rat
Host	Rabbit
Clonality	Polyclonal
Calculated MW	47kDa KDa

CCNE1 / Cyclin E1 Antibody (aa91-140) - Additional Information

Gene ID 898

Other Names

G1/S-specific cyclin-E1, CCNE1, CCNE

Target/Specificity

Cyclin E1 Antibody detects endogenous levels of total Cyclin E1 protein.

Reconstitution & Storage

Long term: -20°C; Short term: +4°C; Avoid freeze-thaw cycles.

Precautions

CCNE1 / Cyclin E1 Antibody (aa91-140) is for research use only and not for use in diagnostic or therapeutic procedures.

CCNE1 / Cyclin E1 Antibody (aa91-140) - Protein Information

Name CCNE1

Synonyms CCNE

Function

Essential for the control of the cell cycle at the G1/S (start) transition.

Cellular Location

Nucleus.

Tissue Location

Highly expressed in testis and placenta. Low levels in bronchial epithelial cells.

Volume

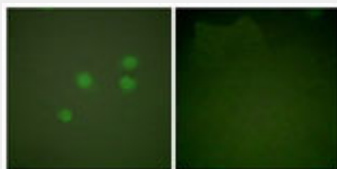
50 µl

CCNE1 / Cyclin E1 Antibody (aa91-140) - Protocols

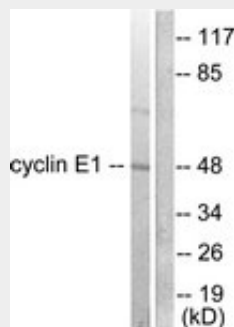
Provided below are standard protocols that you may find useful for product applications.

- [Western Blot](#)
- [Blocking Peptides](#)
- [Dot Blot](#)
- [Immunohistochemistry](#)
- [Immunofluorescence](#)
- [Immunoprecipitation](#)
- [Flow Cytometry](#)
- [Cell Culture](#)

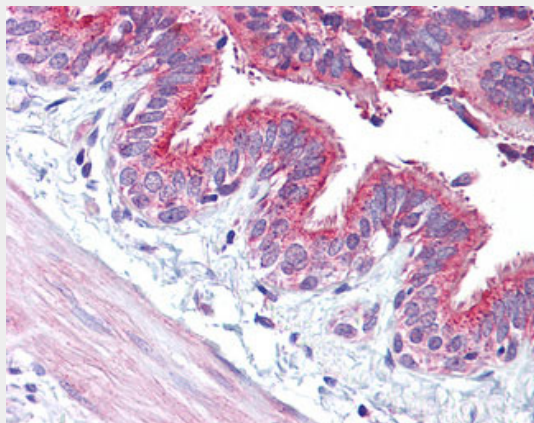
CCNE1 / Cyclin E1 Antibody (aa91-140) - Images



Immunofluorescence of A549 cells, using Cyclin E1 Antibody.



Western blot of extracts from K562 cells, using Cyclin E1 Antibody.



Anti-CCNE1 / Cyclin E1 antibody IHC of human-lung.

CCNE1 / Cyclin E1 Antibody (aa91-140) - Background

Essential for the control of the cell cycle at the G1/S (start) transition.

CCNE1 / Cyclin E1 Antibody (aa91-140) - References

- Lew D.J.,et al.Cell 66:1197-1206(1991).
Koff A.,et al.Cell 66:1217-1228(1991).
Ohtsubo M.,et al.Mol. Cell. Biol. 15:2612-2624(1995).
Ota T.,et al.Nat. Genet. 36:40-45(2004).
Geng Y.,et al.Oncogene 12:1173-1180(1996).