

CCS Antibody (clone 1G1)
Mouse Monoclonal Antibody
Catalog # ALS14440**Specification**

CCS Antibody (clone 1G1) - Product Information

Application	WB, IHC
Primary Accession	O14618
Reactivity	Human
Host	Mouse
Clonality	Monoclonal
Calculated MW	29kDa KDa

CCS Antibody (clone 1G1) - Additional Information**Gene ID** 9973**Other Names**

Copper chaperone for superoxide dismutase, Superoxide dismutase copper chaperone, CCS

Reconstitution & Storage

Long term: -20°C; Short term: +4°C; Avoid freeze-thaw cycles.

Precautions

CCS Antibody (clone 1G1) is for research use only and not for use in diagnostic or therapeutic procedures.

CCS Antibody (clone 1G1) - Protein Information**Name** CCS ([HGNC:1613](#))**Function**

Delivers copper to copper zinc superoxide dismutase (SOD1).

Cellular Location

Cytoplasm.

Tissue Location

Ubiquitous.

Volume

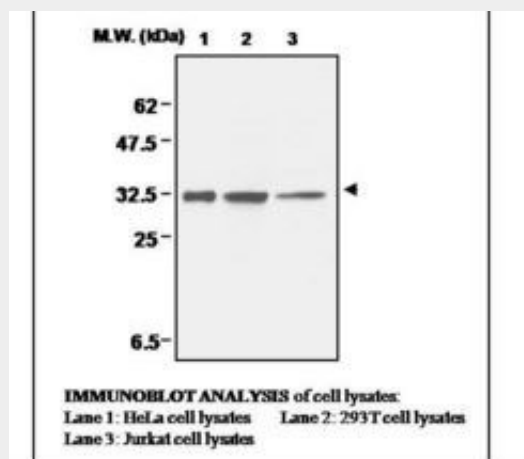
50 µl

CCS Antibody (clone 1G1) - Protocols

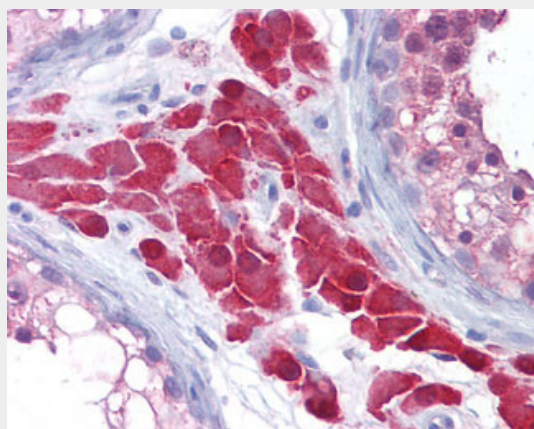
Provided below are standard protocols that you may find useful for product applications.

- [Western Blot](#)
- [Blocking Peptides](#)
- [Dot Blot](#)
- [Immunohistochemistry](#)
- [Immunofluorescence](#)
- [Immunoprecipitation](#)
- [Flow Cytometry](#)
- [Cell Culture](#)

CCS Antibody (clone 1G1) - Images



0



Anti-CCS antibody IHC of human testis.

CCS Antibody (clone 1G1) - Background

Delivers copper to copper zinc superoxide dismutase (SOD1).

CCS Antibody (clone 1G1) - References

- Culotta V.C., et al. *J. Biol. Chem.* 272:23469-23472(1997).
Banci L., et al. *ChemBioChem* 14:1839-1844(2013).
Bhat K.S., et al. Submitted (MAY-2002) to the EMBL/GenBank/DDBJ databases.
Halleck A., et al. Submitted (JUN-2004) to the EMBL/GenBank/DDBJ databases.
Casareno R.L.B., et al. *J. Biol. Chem.* 273:23625-23628(1998).