

APOB / Apolipoprotein B Antibody
Rabbit Polyclonal Antibody
Catalog # ALS14416**Specification**

APOB / Apolipoprotein B Antibody - Product Information

Application	IHC
Primary Accession	P04114
Reactivity	Human, Mouse
Host	Rabbit
Clonality	Polyclonal
Calculated MW	516kDa KDa

APOB / Apolipoprotein B Antibody - Additional Information**Gene ID** 338**Other Names**

Apolipoprotein B-100, Apo B-100, Apolipoprotein B-48, Apo B-48, APOB

Target/SpecificityRecognizes mouse Apo B48 (241kD) and B100 (513kD) as these proteins are highly conserved.
Species cross-reactivity: human.**Reconstitution & Storage**

Long term: -20°C; Short term: +4°C. Avoid repeat freeze-thaw cycles.

Precautions

APOB / Apolipoprotein B Antibody is for research use only and not for use in diagnostic or therapeutic procedures.

APOB / Apolipoprotein B Antibody - Protein Information**Name** APOB**Function**

Apolipoprotein B is a major protein constituent of chylomicrons (apo B-48), LDL (apo B-100) and VLDL (apo B-100). Apo B- 100 functions as a recognition signal for the cellular binding and internalization of LDL particles by the apoB/E receptor.

Cellular Location

Cytoplasm. Secreted. Lipid droplet

Volume

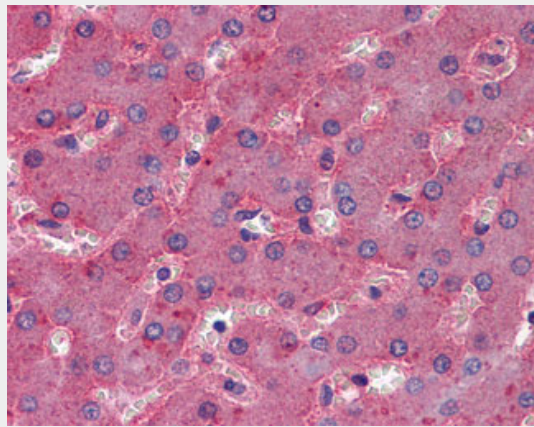
50 µl

APOB / Apolipoprotein B Antibody - Protocols

Provided below are standard protocols that you may find useful for product applications.

- [Western Blot](#)
- [Blocking Peptides](#)
- [Dot Blot](#)
- [Immunohistochemistry](#)
- [Immunofluorescence](#)
- [Immunoprecipitation](#)
- [Flow Cytometry](#)
- [Cell Culture](#)

APOB / Apolipoprotein B Antibody - Images



Anti-Apolipoprotein B antibody IHC of human liver.

APOB / Apolipoprotein B Antibody - Background

Apolipoprotein B is a major protein constituent of chylomicrons (apo B-48), LDL (apo B-100) and VLDL (apo B-100). Apo B-100 functions as a recognition signal for the cellular binding and internalization of LDL particles by the apoB/E receptor.

APOB / Apolipoprotein B Antibody - References

- Knott T.C., et al. *Nucleic Acids Res.* 14:7501-7503(1986).
Ludwig E.H., et al. *DNA* 6:363-372(1987).
Chen S.-H., et al. *J. Biol. Chem.* 261:12918-12921(1986).
Law S.W., et al. *Proc. Natl. Acad. Sci. U.S.A.* 83:8142-8146(1986).
Cladaras C., et al. *EMBO J.* 5:3495-3507(1986).