

**SRSF3 / SRP20 Antibody (aa111-160)**  
**Rabbit Polyclonal Antibody**  
**Catalog # ALS14415****Specification**

---

**SRSF3 / SRP20 Antibody (aa111-160) - Product Information**

Application	IF, WB, IHC
Primary Accession	<a href="#">P84103</a>
Reactivity	Human, Mouse
Host	Rabbit
Clonality	Polyclonal
Calculated MW	19kDa KDa

**SRSF3 / SRP20 Antibody (aa111-160) - Additional Information****Gene ID** 6428**Other Names**

Serine/arginine-rich splicing factor 3, Pre-mRNA-splicing factor SRP20, Splicing factor, arginine/serine-rich 3, SRSF3, SFRS3, SRP20

**Target/Specificity**

SFRS3 Antibody detects endogenous levels of total SFRS3 protein.

**Reconstitution & Storage**

Store at -20°C for up to one year.

**Precautions**

SRSF3 / SRP20 Antibody (aa111-160) is for research use only and not for use in diagnostic or therapeutic procedures.

**SRSF3 / SRP20 Antibody (aa111-160) - Protein Information****Name** SRSF3**Synonyms** SFRS3, SRP20**Function**

Splicing factor, which binds the consensus motif 5'- C[ACU][AU]C[ACU][AC]C-3' within pre-mRNA and promotes specific exons inclusion during alternative splicing (PubMed: [17036044](http://www.uniprot.org/citations/17036044), PubMed: [26876937](http://www.uniprot.org/citations/26876937), PubMed: [32440474](http://www.uniprot.org/citations/32440474)). Interaction with YTHDC1, a RNA- binding protein that recognizes and binds N6-methyladenosine (m6A)-containing RNAs, promotes recruitment of SRSF3 to its mRNA-binding elements adjacent to m6A sites within exons (PubMed: [26876937](http://www.uniprot.org/citations/26876937)). Also functions as an adapter involved in mRNA nuclear export (PubMed: [11336712](http://www.uniprot.org/citations/11336712)).

PubMed: [18364396](http://www.uniprot.org/citations/18364396), PubMed: [28984244](http://www.uniprot.org/citations/28984244)). Binds mRNA which is thought to be transferred to the NXF1-NXT1 heterodimer for export (TAP/NXF1 pathway); enhances NXF1-NXT1 RNA-binding activity (PubMed: [11336712](http://www.uniprot.org/citations/11336712), PubMed: [18364396](http://www.uniprot.org/citations/18364396)). Involved in nuclear export of m6A- containing mRNAs via interaction with YTHDC1: interaction with YTHDC1 facilitates m6A-containing mRNA-binding to both SRSF3 and NXF1, promoting mRNA nuclear export (PubMed: [28984244](http://www.uniprot.org/citations/28984244)).

### Cellular Location

Nucleus. Nucleus speckle. Cytoplasm. Note=Recruited to nuclear speckles following interaction with YTHDC1.

### Volume

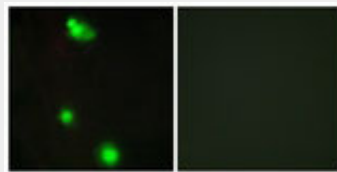
50  $\mu$ l

### SRSF3 / SRP20 Antibody (aa111-160) - Protocols

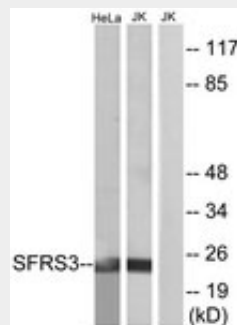
Provided below are standard protocols that you may find useful for product applications.

- [Western Blot](#)
- [Blocking Peptides](#)
- [Dot Blot](#)
- [Immunohistochemistry](#)
- [Immunofluorescence](#)
- [Immunoprecipitation](#)
- [Flow Cytometry](#)
- [Cell Culture](#)

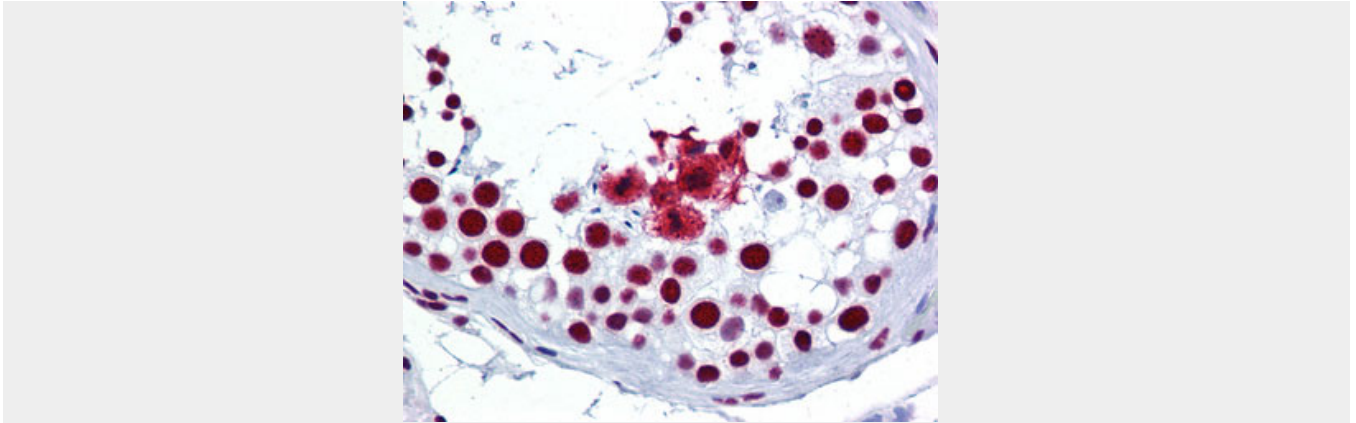
### SRSF3 / SRP20 Antibody (aa111-160) - Images



Immunofluorescence of MCF7 cells, using SFRS3 Antibody.



Western blot of extracts from HeLa/Jurkat cells, using SFRS3 Antibody.



Anti-SRSF3 / SFRS3 antibody IHC of human testis.

### **SRSF3 / SRP20 Antibody (aa111-160) - Background**

May be involved in RNA processing in relation with cellular proliferation and/or maturation. May function as export adapter involved in mRNA nuclear export such as of histone H2A. Binds mRNA which is thought to be transferred to the NXF1-NXT1 heterodimer for export (TAP/NXF1 pathway); enhances NXF1-NXT1 RNA- binding activity. RNA-binding is semi-sequence specific.

### **SRSF3 / SRP20 Antibody (aa111-160) - References**

- Zahler A.M., et al. *Genes Dev.* 6:837-847(1992).
- Liu W.L., et al. Submitted (NOV-1998) to the EMBL/GenBank/DDBJ databases.
- Ota T., et al. *Nat. Genet.* 36:40-45(2004).
- Kalnina N., et al. Submitted (OCT-2004) to the EMBL/GenBank/DDBJ databases.
- Mungall A.J., et al. *Nature* 425:805-811(2003).