

**BCL11A Antibody (clone 3D9)**  
**Mouse Monoclonal Antibody**  
**Catalog # ALS14333****Specification**

---

**BCL11A Antibody (clone 3D9) - Product Information**

Application	<b>WB, IHC</b>
Primary Accession	<a href="#">O9H165</a>
Reactivity	<b>Human</b>
Host	<b>Mouse</b>
Clonality	<b>Monoclonal</b>
Calculated MW	<b>91kDa KDa</b>

**BCL11A Antibody (clone 3D9) - Additional Information****Gene ID** 53335**Other Names**

B-cell lymphoma/leukemia 11A, BCL-11A, B-cell CLL/lymphoma 11A, COUP-TF-interacting protein 1, Ecotropic viral integration site 9 protein homolog, EVI-9, Zinc finger protein 856, BCL11A, CTIP1, EVI9, KIAA1809, ZNF856

**Target/Specificity**

Human BCL11A

**Reconstitution & Storage**

Short term 4°C, long term aliquot and store at -20°C, avoid freeze thaw cycles.

**Precautions**

BCL11A Antibody (clone 3D9) is for research use only and not for use in diagnostic or therapeutic procedures.

**BCL11A Antibody (clone 3D9) - Protein Information****Name** BCL11A**Synonyms** CTIP1, EVI9, KIAA1809, ZNF856**Function**

Transcription factor (PubMed: [16704730](http://www.uniprot.org/citations/16704730), PubMed: [29606353](http://www.uniprot.org/citations/29606353)). Associated with the BAF SWI/SNF chromatin remodeling complex (PubMed: [23644491](http://www.uniprot.org/citations/23644491)). Binds to the 5'-TGACCA-3' sequence motif in regulatory regions of target genes, including a distal promoter of the HBG1 hemoglobin subunit gamma-1 gene (PubMed: [29606353](http://www.uniprot.org/citations/29606353)). Involved in regulation of the developmental switch from gamma- to beta-globin, probably via direct repression of HBG1; hence indirectly repressing fetal hemoglobin (HbF) level (PubMed: <a

href="http://www.uniprot.org/citations/26375765" target="\_blank">26375765</a>, PubMed:<a href="http://www.uniprot.org/citations/29606353" target="\_blank">29606353</a>). Involved in brain development (PubMed:<a href="http://www.uniprot.org/citations/27453576" target="\_blank">27453576</a>). May play a role in hematopoiesis (By similarity). Essential factor in lymphopoiesis required for B-cell formation in fetal liver (By similarity). May function as a modulator of the transcriptional repression activity of NR2F2 (By similarity).

#### Cellular Location

Cytoplasm. Nucleus. Chromosome. Note=Associates with the nuclear body Colocalizes with SUMO1 and SENP2 in nuclear speckles (By similarity) [Isoform 2]: Cytoplasm. Nucleus Note=Predominantly localized in the nucleus in nuclear paraspeckles

#### Tissue Location

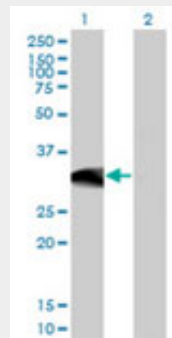
Expressed at high levels in brain, spleen thymus, bone marrow and testis. Expressed in CD34-positive myeloid precursor cells, B-cells, monocytes and megakaryocytes. Expression is tightly regulated during B-cell development.

### BCL11A Antibody (clone 3D9) - Protocols

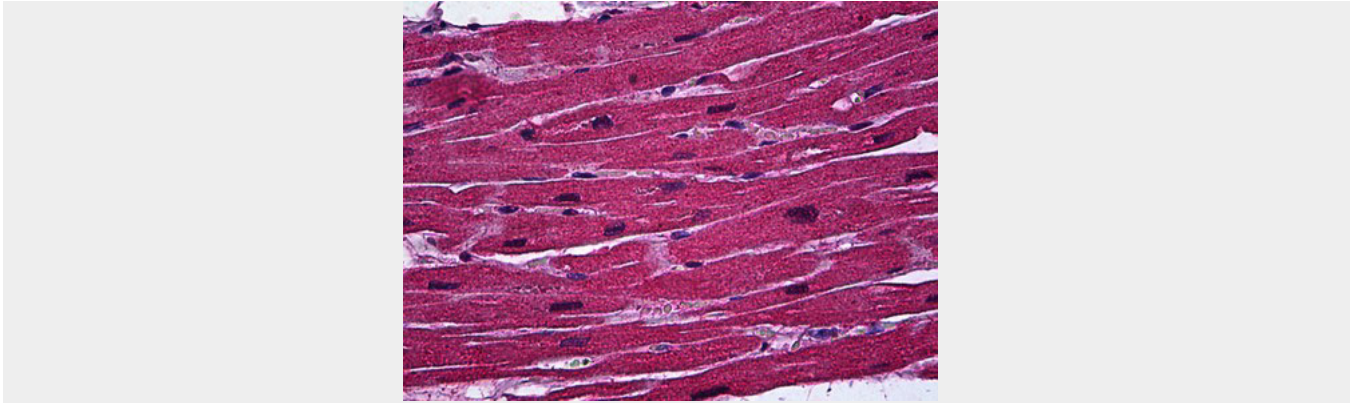
Provided below are standard protocols that you may find useful for product applications.

- [Western Blot](#)
- [Blocking Peptides](#)
- [Dot Blot](#)
- [Immunohistochemistry](#)
- [Immunofluorescence](#)
- [Immunoprecipitation](#)
- [Flow Cytometry](#)
- [Cell Culture](#)

### BCL11A Antibody (clone 3D9) - Images



Western blot of BCL11A expression in transfected 293T cell line by BCL11A monoclonal antibody,...



Anti-BCL11A antibody IHC of human heart.

#### **BCL11A Antibody (clone 3D9) - Background**

Functions as a myeloid and B-cell proto-oncogene. May play important roles in leukemogenesis and hematopoiesis. An essential factor in lymphopoiesis, is required for B-cell formation in fetal liver. May function as a modulator of the transcriptional repression activity of ARP1 (By similarity).

#### **BCL11A Antibody (clone 3D9) - References**

- Saiki Y.,et al.Genomics 70:387-391(2000).
- Satterwhite E.,et al.Blood 98:3413-3420(2001).
- Suriyapperuma S.P.,et al.Submitted (FEB-2003) to the EMBL/GenBank/DDBJ databases.
- Nagase T.,et al.DNA Res. 8:85-95(2001).
- Mural R.J.,et al.Submitted (SEP-2005) to the EMBL/GenBank/DDBJ databases.