

**CDH17 / Cadherin 17 Antibody (clone 3H2)**  
**Mouse Monoclonal Antibody**  
**Catalog # ALS14325**

**Specification**

---

**CDH17 / Cadherin 17 Antibody (clone 3H2) - Product Information**

Application	IHC
Primary Accession	<a href="#">O12864</a>
Reactivity	Human
Host	Mouse
Clonality	Monoclonal
Calculated MW	92kDa KDa

**CDH17 / Cadherin 17 Antibody (clone 3H2) - Additional Information**

**Gene ID** 1015

**Other Names**

Cadherin-17, Intestinal peptide-associated transporter HPT-1, Liver-intestine cadherin, LI-cadherin, CDH17

**Target/Specificity**

Human CDH17

**Reconstitution & Storage**

Aliquot and store at -20°C or -80°C. Avoid freeze-thaw cycles.

**Precautions**

CDH17 / Cadherin 17 Antibody (clone 3H2) is for research use only and not for use in diagnostic or therapeutic procedures.

**CDH17 / Cadherin 17 Antibody (clone 3H2) - Protein Information**

**Name** CDH17

**Function**

Cadherins are calcium-dependent cell adhesion proteins. They preferentially interact with themselves in a homophilic manner in connecting cells; cadherins may thus contribute to the sorting of heterogeneous cell types. LI-cadherin may have a role in the morphological organization of liver and intestine. Involved in intestinal peptide transport.

**Cellular Location**

Cell membrane; Single-pass type I membrane protein

**Tissue Location**

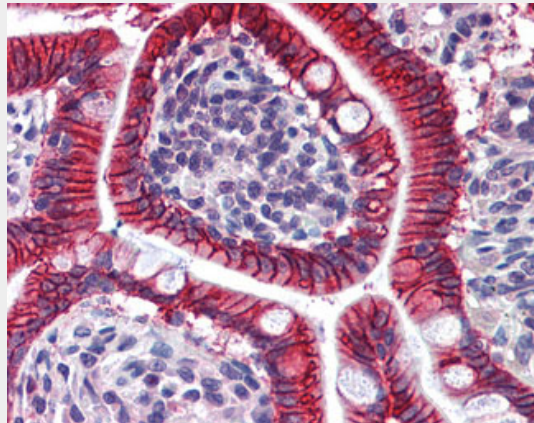
Expressed in the gastrointestinal tract and pancreatic duct. Not detected in kidney, lung, liver, brain, adrenal gland and skin.

## CDH17 / Cadherin 17 Antibody (clone 3H2) - Protocols

Provided below are standard protocols that you may find useful for product applications.

- [Western Blot](#)
- [Blocking Peptides](#)
- [Dot Blot](#)
- [Immunohistochemistry](#)
- [Immunofluorescence](#)
- [Immunoprecipitation](#)
- [Flow Cytometry](#)
- [Cell Culture](#)

## CDH17 / Cadherin 17 Antibody (clone 3H2) - Images



Anti-CDH17 / LI Cadherin antibody IHC of human small intestine.

## CDH17 / Cadherin 17 Antibody (clone 3H2) - Background

Cadherins are calcium-dependent cell adhesion proteins. They preferentially interact with themselves in a homophilic manner in connecting cells; cadherins may thus contribute to the sorting of heterogeneous cell types. LI-cadherin may have a role in the morphological organization of liver and intestine. Involved in intestinal peptide transport.

## CDH17 / Cadherin 17 Antibody (clone 3H2) - References

- Dantzig A.H., et al. *Science* 264:430-433(1994).  
Boettinger A., et al. Submitted (DEC-1994) to the EMBL/GenBank/DDBJ databases.  
Nusbaum C., et al. *Nature* 439:331-335(2006).