

KRT20 / CK20 / Cytokeratin 20 Antibody (clone IT-Ks 20.10, FITC)
Mouse Monoclonal Antibody
Catalog # ALS14286

Specification

KRT20 / CK20 / Cytokeratin 20 Antibody (clone IT-Ks 20.10, FITC) - Product Information

Application	IHC
Primary Accession	P35900
Reactivity	Human, Rat, Pig
Host	Mouse
Clonality	Monoclonal
Calculated MW	48kDa KDa

KRT20 / CK20 / Cytokeratin 20 Antibody (clone IT-Ks 20.10, FITC) - Additional Information

Gene ID 54474

Other Names

Keratin, type I cytoskeletal 20, Cytokeratin-20, CK-20, Keratin-20, K20, Protein IT, KRT20

Target/Specificity

Human, pig, and rat. Polypeptide reacting: Protein IT Reactivities on cultured Cell lines that have been tested so far are HT-29, LoVo, DLD-1, SW 1116 CaCo-2, RT-4.

Reconstitution & Storage

Long term: -20°C; Short term: +4°C. Avoid repeat freeze-thaw cycles.

Precautions

KRT20 / CK20 / Cytokeratin 20 Antibody (clone IT-Ks 20.10, FITC) is for research use only and not for use in diagnostic or therapeutic procedures.

KRT20 / CK20 / Cytokeratin 20 Antibody (clone IT-Ks 20.10, FITC) - Protein Information

Name KRT20

Function

Plays a significant role in maintaining keratin filament organization in intestinal epithelia. When phosphorylated, plays a role in the secretion of mucin in the small intestine (By similarity).

Cellular Location

Cytoplasm

Tissue Location

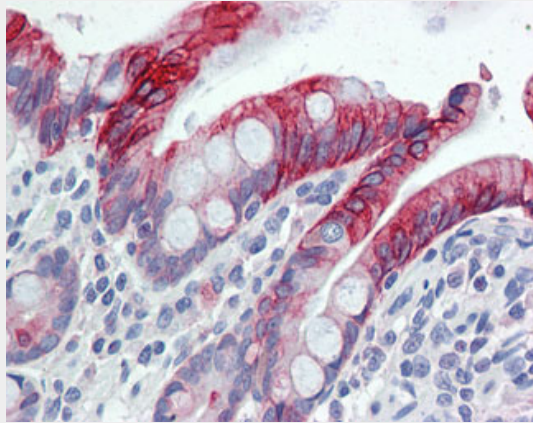
Expressed predominantly in the intestinal epithelium. Expressed in luminal cells of colonic mucosa. Also expressed in the Merkel cells of keratinized oral mucosa; specifically at the tips of some rete ridges of the gingival mucosa, in the basal layer of the palatal mucosa and in the taste buds of lingual mucosa

KRT20 / CK20 / Cytokeratin 20 Antibody (clone IT-Ks 20.10, FITC) - Protocols

Provided below are standard protocols that you may find useful for product applications.

- [Western Blot](#)
- [Blocking Peptides](#)
- [Dot Blot](#)
- [Immunohistochemistry](#)
- [Immunofluorescence](#)
- [Immunoprecipitation](#)
- [Flow Cytometry](#)
- [Cell Culture](#)

KRT20 / CK20 / Cytokeratin 20 Antibody (clone IT-Ks 20.10, FITC) - Images



Anti-KRT20 / Cytokeratin 20 antibody IHC of human small intestine.

KRT20 / CK20 / Cytokeratin 20 Antibody (clone IT-Ks 20.10, FITC) - Background

Plays a significant role in maintaining keratin filament organization in intestinal epithelia. When phosphorylated, plays a role in the secretion of mucin in the small intestine (By similarity).

KRT20 / CK20 / Cytokeratin 20 Antibody (clone IT-Ks 20.10, FITC) - References

- Moll R., et al. Differentiation 53:75-93(1993).
Ota T., et al. Nat. Genet. 36:40-45(2004).
Zhou Q., et al. J. Biol. Chem. 281:16453-16461(2006).
Calnek D., et al. Differentiation 53:95-104(1993).
Moll R., et al. J. Cell Biol. 111:567-580(1990).