

TGFBI Antibody (Internal)
Goat Polyclonal Antibody
Catalog # ALS14277**Specification**

TGFBI Antibody (Internal) - Product Information

Application	WB, IHC
Primary Accession	Q15582
Reactivity	Human, Mouse, Rat, Rabbit, Pig, Horse, Bovine, Dog
Host	Goat
Clonality	Polyclonal
Calculated MW	75kDa KDa

TGFBI Antibody (Internal) - Additional Information**Gene ID** 7045**Other Names**

Transforming growth factor-beta-induced protein ig-h3, Beta ig-h3, Kerato-epithelin, RGD-containing collagen-associated protein, RGD-CAP, TGFBI, BIGH3

Target/Specificity

Human TGFBI.

Reconstitution & Storage

Store at -20°C. Minimize freezing and thawing.

Precautions

TGFBI Antibody (Internal) is for research use only and not for use in diagnostic or therapeutic procedures.

TGFBI Antibody (Internal) - Protein Information**Name** TGFBI**Synonyms** BIGH3**Function**

Plays a role in cell adhesion (PubMed:8024701). May play a role in cell-collagen interactions (By similarity).

Cellular Location

Secreted. Secreted, extracellular space, extracellular matrix Note=May be associated both with microfibrils and with the cell surface (PubMed:8077289).

Tissue Location

Highly expressed in the corneal epithelium (PubMed:27609313, PubMed:8077289). Expressed in

heart, placenta, lung, liver, skeletal muscle, kidney and pancreas (PubMed:8077289)

TGFBI Antibody (Internal) - Protocols

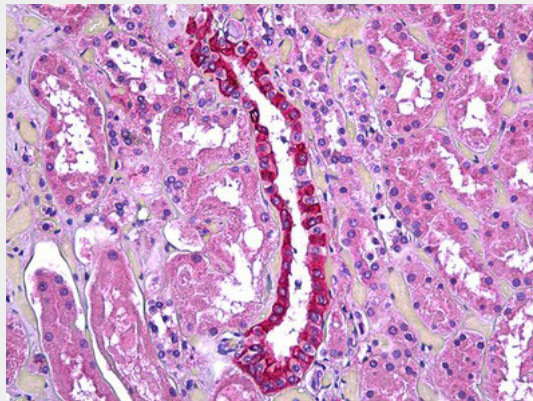
Provided below are standard protocols that you may find useful for product applications.

- [Western Blot](#)
- [Blocking Peptides](#)
- [Dot Blot](#)
- [Immunohistochemistry](#)
- [Immunofluorescence](#)
- [Immunoprecipitation](#)
- [Flow Cytometry](#)
- [Cell Culture](#)

TGFBI Antibody (Internal) - Images



TGFBI antibody (0.3 ug/ml) staining of Human Kidney lysate (35 ug protein/ml in RIPA buffer).



Anti-TGFBI antibody IHC of human kidney, renal duct.

TGFBI Antibody (Internal) - Background

Binds to type I, II, and IV collagens. This adhesion protein may play an important role in cell-collagen interactions. In cartilage, may be involved in endochondral bone formation.

TGFBI Antibody (Internal) - References

Skonier J., et al. DNA Cell Biol. 11:511-522(1992).

Munier F.L., et al. Nat. Genet. 15:247-251(1997).

Kalnine N., et al. Submitted (AUG-2003) to the EMBL/GenBank/DDBJ databases.

Schmutz J., et al. Nature 431:268-274(2004).

Mural R.J., et al. Submitted (SEP-2005) to the EMBL/GenBank/DDBJ databases.