

COL1A1 / Collagen I Alpha 1 Antibody (clone 3G3)
Mouse Monoclonal Antibody
Catalog # ALS14269

Specification

COL1A1 / Collagen I Alpha 1 Antibody (clone 3G3) - Product Information

Application	WB, IHC
Primary Accession	P02452
Reactivity	Human, Mouse
Host	Mouse
Clonality	Monoclonal
Calculated MW	139kDa KDa

COL1A1 / Collagen I Alpha 1 Antibody (clone 3G3) - Additional Information

Gene ID 1277

Other Names

Collagen alpha-1(I) chain, Alpha-1 type I collagen, COL1A1

Target/Specificity

Human COL1A1

Reconstitution & Storage

Long term: -20°C; Short term: -20°C

Precautions

COL1A1 / Collagen I Alpha 1 Antibody (clone 3G3) is for research use only and not for use in diagnostic or therapeutic procedures.

COL1A1 / Collagen I Alpha 1 Antibody (clone 3G3) - Protein Information

Name COL1A1

Function

Type I collagen is a member of group I collagen (fibrillar forming collagen).

Cellular Location

Secreted, extracellular space, extracellular matrix {ECO:0000255|PROSITE-ProRule:PRU00793}

Tissue Location

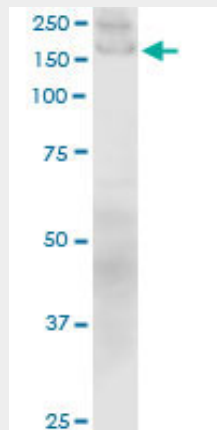
Forms the fibrils of tendon, ligaments and bones. In bones the fibrils are mineralized with calcium hydroxyapatite

COL1A1 / Collagen I Alpha 1 Antibody (clone 3G3) - Protocols

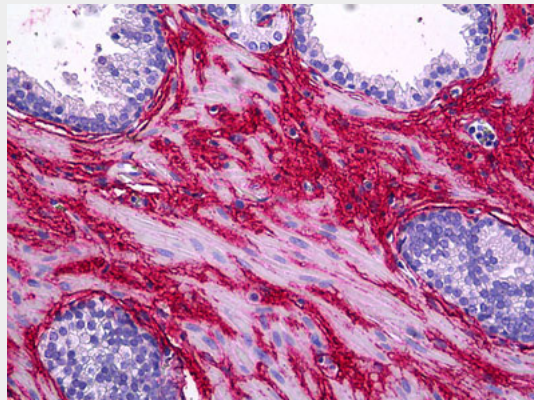
Provided below are standard protocols that you may find useful for product applications.

- [Western Blot](#)
- [Blocking Peptides](#)
- [Dot Blot](#)
- [Immunohistochemistry](#)
- [Immunofluorescence](#)
- [Immunoprecipitation](#)
- [Flow Cytometry](#)
- [Cell Culture](#)

COL1A1 / Collagen I Alpha 1 Antibody (clone 3G3) - Images



COL1A1 monoclonal antibody clone 3G3. Western blot of COL1A1 expression in NIH/3T3.



Anti-COL1A1 antibody IHC of human prostate.

COL1A1 / Collagen I Alpha 1 Antibody (clone 3G3) - Background

Type I collagen is a member of group I collagen (fibrillar forming collagen).

COL1A1 / Collagen I Alpha 1 Antibody (clone 3G3) - References

Dalgleish R., et al. Submitted (JUL-1996) to the EMBL/GenBank/DDBJ databases.
Korkko J.M., et al. Am. J. Hum. Genet. 62:98-110(1998).
Korkko J.M., et al. Submitted (MAY-1999) to the EMBL/GenBank/DDBJ databases.
Totoki Y., et al. Submitted (MAR-2005) to the EMBL/GenBank/DDBJ databases.
D'Alessio M., et al. Gene 67:105-115(1988).