

EBF3 / COE3 Antibody (clone 8D6)
Mouse Monoclonal Antibody
Catalog # ALS14266**Specification**

EBF3 / COE3 Antibody (clone 8D6) - Product Information

Application	WB, IHC
Primary Accession	O9H4W6
Reactivity	Human, Mouse
Host	Mouse
Clonality	Monoclonal
Calculated MW	65kDa KDa

EBF3 / COE3 Antibody (clone 8D6) - Additional Information**Gene ID** 253738**Other Names**

Transcription factor COE3, Early B-cell factor 3, EBF-3, Olf-1/EBF-like 2, O/E-2, OE-2, EBF3, COE3

Target/Specificity

Human EBF3

Reconstitution & Storage

Short term 4°C, long term aliquot and store at -20°C, avoid freeze thaw cycles.

Precautions

EBF3 / COE3 Antibody (clone 8D6) is for research use only and not for use in diagnostic or therapeutic procedures.

EBF3 / COE3 Antibody (clone 8D6) - Protein Information**Name** EBF3**Synonyms** COE3**Function**Transcriptional activator (PubMed: [28017370](http://www.uniprot.org/citations/28017370) target="_blank">28017370, PubMed: [28017372](http://www.uniprot.org/citations/28017372) target="_blank">28017372, PubMed: [28017373](http://www.uniprot.org/citations/28017373) target="_blank">28017373). Recognizes variations of the palindromic sequence 5'-ATTCCCNNGGAATT-3' (By similarity).**Cellular Location**

Nucleus.

Tissue Location

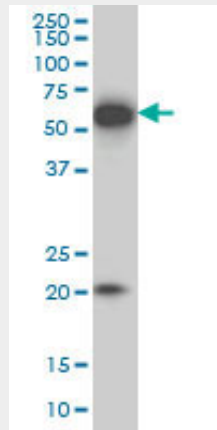
Expressed in brain..

EBF3 / COE3 Antibody (clone 8D6) - Protocols

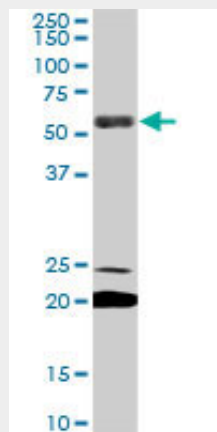
Provided below are standard protocols that you may find useful for product applications.

- [Western Blot](#)
- [Blocking Peptides](#)
- [Dot Blot](#)
- [Immunohistochemistry](#)
- [Immunofluorescence](#)
- [Immunoprecipitation](#)
- [Flow Cytometry](#)
- [Cell Culture](#)

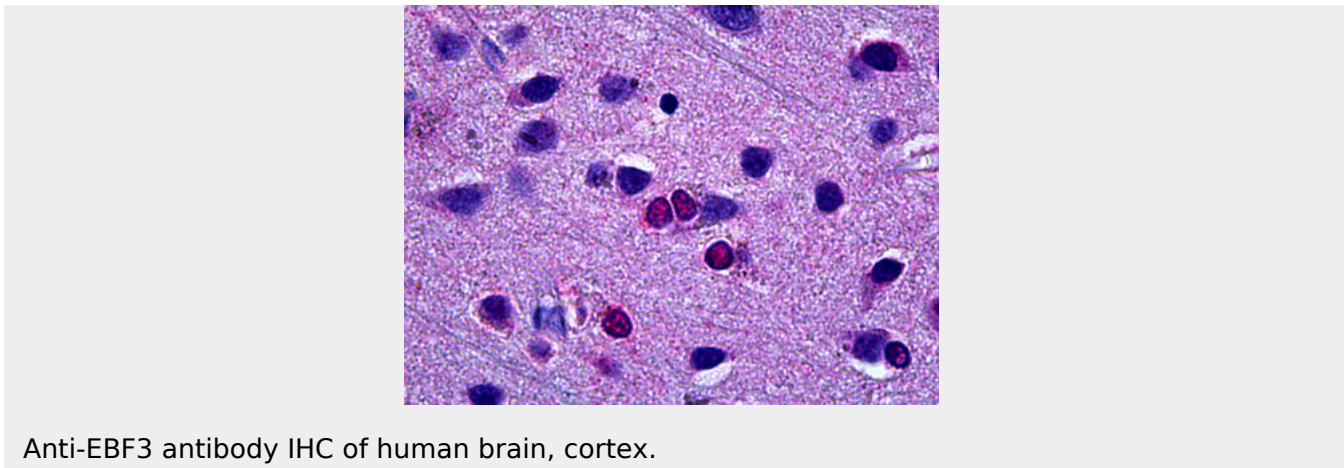
EBF3 / COE3 Antibody (clone 8D6) - Images



EBF3 monoclonal antibody (M05), clone 8D6 Western blot of EBF3 expression in IMR-32.



EBF3 monoclonal antibody (M05), clone 8D6. Western blot of EBF3 expression in NIH/3T3.



Anti-EBF3 antibody IHC of human brain, cortex.

EBF3 / COE3 Antibody (clone 8D6) - Background

Transcriptional activator which recognizes variations of the palindromic sequence 5'-ATTCCCNNGGGAATT-3'.

EBF3 / COE3 Antibody (clone 8D6) - References

- Deloukas P., et al. Nature 429:375-381(2004).
- Mural R.J., et al. Submitted (SEP-2005) to the EMBL/GenBank/DDBJ databases.
- Zardo G., et al. Nat. Genet. 32:453-458(2002).
- Siponen M.I., et al. J. Biol. Chem. 285:25875-25879(2010).