

PPY / Pancreatic Polypeptide Antibody (Internal)
Goat Polyclonal Antibody
Catalog # ALS14251

Specification

PPY / Pancreatic Polypeptide Antibody (Internal) - Product Information

Application	IHC
Primary Accession	P01298
Reactivity	Human, Monkey
Host	Goat
Clonality	Polyclonal
Calculated MW	10kDa KDa

PPY / Pancreatic Polypeptide Antibody (Internal) - Additional Information

Gene ID 5539

Other Names

Pancreatic prohormone, Pancreatic polypeptide, PP, Obinepitide, Pancreatic hormone, PH, Pancreatic icosapeptide, PI, PPY, PNP

Target/Specificity

Human PPY.

Reconstitution & Storage

Store at -20°C. Minimize freezing and thawing.

Precautions

PPY / Pancreatic Polypeptide Antibody (Internal) is for research use only and not for use in diagnostic or therapeutic procedures.

PPY / Pancreatic Polypeptide Antibody (Internal) - Protein Information

Name PPY ([HGNC:9327](#))

Synonyms PNP

Function

[Pancreatic polypeptide]: Hormone secreted by pancreatic cells that acts as a regulator of pancreatic and gastrointestinal functions probably by signaling through the G protein-coupled receptor NPY4R2.

Cellular Location

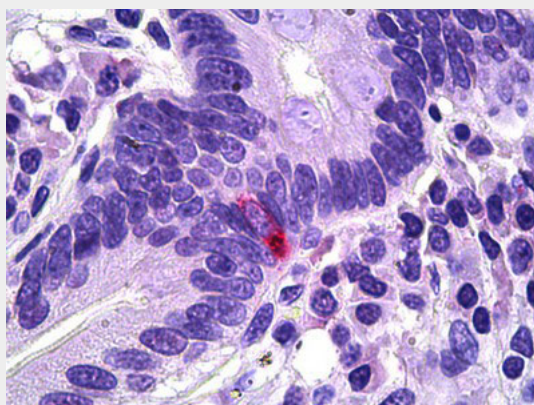
Secreted

PPY / Pancreatic Polypeptide Antibody (Internal) - Protocols

Provided below are standard protocols that you may find useful for product applications.

- [Western Blot](#)
- [Blocking Peptides](#)
- [Dot Blot](#)
- [Immunohistochemistry](#)
- [Immunofluorescence](#)
- [Immunoprecipitation](#)
- [Flow Cytometry](#)
- [Cell Culture](#)

PPY / Pancreatic Polypeptide Antibody (Internal) - Images



Anti-PPY antibody IHC of human intestine, neuroendocrine cells.

PPY / Pancreatic Polypeptide Antibody (Internal) - Background

Pancreatic hormone is synthesized in pancreatic islets of Langerhans and acts as a regulator of pancreatic and gastrointestinal functions.

PPY / Pancreatic Polypeptide Antibody (Internal) - References

- Boel E., et al. EMBO J. 3:909-912(1984).
Leiter A.B., et al. J. Biol. Chem. 260:13013-13017(1985).
Leiter A.B., et al. J. Biol. Chem. 259:14702-14705(1984).
Takeuchi T., et al. J. Clin. Invest. 77:1038-1041(1986).
Schwartz T.W., et al. Proc. Natl. Acad. Sci. U.S.A. 81:708-712(1984).