

**ABCC4 / MRP4 Antibody (clone 1B2)**  
**Mouse Monoclonal Antibody**  
**Catalog # ALS14229****Specification**

---

**ABCC4 / MRP4 Antibody (clone 1B2) - Product Information**

Application	<b>WB, IHC</b>
Primary Accession	<a href="#">O15439</a>
Reactivity	<b>Human</b>
Host	<b>Mouse</b>
Clonality	<b>Monoclonal</b>
Calculated MW	<b>150kDa KDa</b>

**ABCC4 / MRP4 Antibody (clone 1B2) - Additional Information****Gene ID** 10257**Other Names**

Multidrug resistance-associated protein 4, ATP-binding cassette sub-family C member 4, MRP/cMOAT-related ABC transporter, Multi-specific organic anion transporter B, MOAT-B, ABCC4, MRP4

**Target/Specificity**

Human ABCC4

**Reconstitution & Storage**

Short term 4°C, long term aliquot and store at -20°C, avoid freeze thaw cycles.

**Precautions**

ABCC4 / MRP4 Antibody (clone 1B2) is for research use only and not for use in diagnostic or therapeutic procedures.

**ABCC4 / MRP4 Antibody (clone 1B2) - Protein Information****Name** ABCC4**Synonyms** MOATB, MRP4**Function**

ATP-dependent transporter of the ATP-binding cassette (ABC) family that actively extrudes physiological compounds and xenobiotics from cells. Transports a range of endogenous molecules that have a key role in cellular communication and signaling, including cyclic nucleotides such as cyclic AMP (cAMP) and cyclic GMP (cGMP), bile acids, steroid conjugates, urate, and prostaglandins (PubMed: [11856762](http://www.uniprot.org/citations/11856762)), PubMed: [12523936](http://www.uniprot.org/citations/12523936), PubMed: [12835412](http://www.uniprot.org/citations/12835412), PubMed: [12883481](http://www.uniprot.org/citations/12883481), PubMed: [15364914](http://www.uniprot.org/citations/15364914)),

PubMed:<a href="http://www.uniprot.org/citations/15454390" target="\_blank">15454390</a>, PubMed:<a href="http://www.uniprot.org/citations/16282361" target="\_blank">16282361</a>, PubMed:<a href="http://www.uniprot.org/citations/17959747" target="\_blank">17959747</a>, PubMed:<a href="http://www.uniprot.org/citations/18300232" target="\_blank">18300232</a>, PubMed:<a href="http://www.uniprot.org/citations/26721430" target="\_blank">26721430</a>). Mediates the ATP-dependent efflux of glutathione conjugates such as leukotriene C4 (LTC4) and leukotriene B4 (LTB4) too. The presence of GSH is necessary for the ATP-dependent transport of LTB4, whereas GSH is not required for the transport of LTC4 (PubMed:<a href="http://www.uniprot.org/citations/17959747" target="\_blank">17959747</a>). Mediates the cotransport of bile acids with reduced glutathione (GSH) (PubMed:<a href="http://www.uniprot.org/citations/12523936" target="\_blank">12523936</a>, PubMed:<a href="http://www.uniprot.org/citations/12883481" target="\_blank">12883481</a>, PubMed:<a href="http://www.uniprot.org/citations/16282361" target="\_blank">16282361</a>). Transports a wide range of drugs and their metabolites, including anticancer, antiviral and antibiotics molecules (PubMed:<a href="http://www.uniprot.org/citations/11856762" target="\_blank">11856762</a>, PubMed:<a href="http://www.uniprot.org/citations/12105214" target="\_blank">12105214</a>, PubMed:<a href="http://www.uniprot.org/citations/15454390" target="\_blank">15454390</a>, PubMed:<a href="http://www.uniprot.org/citations/17344354" target="\_blank">17344354</a>, PubMed:<a href="http://www.uniprot.org/citations/18300232" target="\_blank">18300232</a>). Confers resistance to anticancer agents such as methotrexate (PubMed:<a href="http://www.uniprot.org/citations/11106685" target="\_blank">11106685</a>).

#### Cellular Location

Basolateral cell membrane; Multi-pass membrane protein. Apical cell membrane; Multi-pass membrane protein. Note=Its localization to the basolateral or apical membranes is tissue-dependent.

#### Tissue Location

Widely expressed, with particularly high levels in prostate, but is barely detectable in liver. sinusoidal membrane of hepatocytes

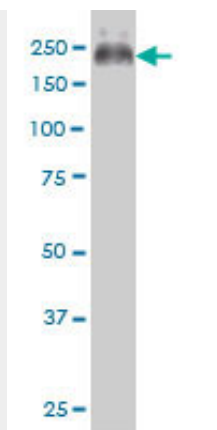
#### ABCC4 / MRP4 Antibody (clone 1B2) - Protocols

Provided below are standard protocols that you may find useful for product applications.

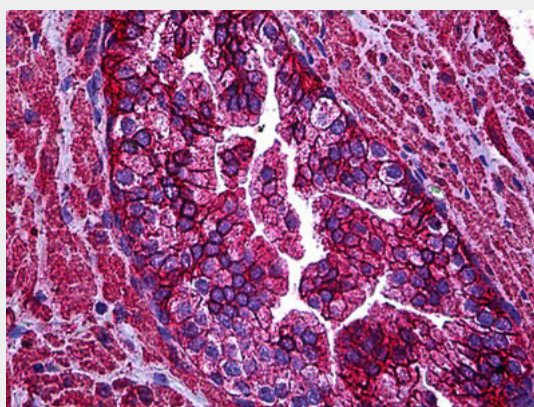
- [Western Blot](#)
- [Blocking Peptides](#)
- [Dot Blot](#)
- [Immunohistochemistry](#)
- [Immunofluorescence](#)
- [Immunoprecipitation](#)
- [Flow Cytometry](#)
- [Cell Culture](#)

#### ABCC4 / MRP4 Antibody (clone 1B2) - Images





ABCC4 monoclonal antibody, clone 1B2 Western blot of ABCC4 expression in HeLa nuclear extract.



Anti-ABCC4 / MRP4 antibody IHC of human prostate.

#### **ABCC4 / MRP4 Antibody (clone 1B2) - Background**

May be an organic anion pump relevant to cellular detoxification.

#### **ABCC4 / MRP4 Antibody (clone 1B2) - References**

- Lee K., et al. *Cancer Res.* 58:2741-2747(1998).
- Adachi M., et al. *J. Biol. Chem.* 277:38998-39004(2002).
- Kato R., et al. Submitted (DEC-2002) to the EMBL/GenBank/DDBJ databases.
- Ota T., et al. *Nat. Genet.* 36:40-45(2004).
- Dunham A., et al. *Nature* 428:522-528(2004).