

**KLK3 / PSA Antibody**  
**Mouse Monoclonal Antibody**  
**Catalog # ALS14224****Specification**

---

**KLK3 / PSA Antibody - Product Information**

Application	IHC
Primary Accession	<a href="#">P07288</a>
Reactivity	Human
Host	Mouse
Clonality	Monoclonal
Calculated MW	29kDa KDa

**KLK3 / PSA Antibody - Additional Information****Gene ID** 354**Other Names**

Prostate-specific antigen, PSA, 3.4.21.77, Gamma-seminoprotein, Seminin, Kallikrein-3, P-30 antigen, Semenogelase, KLK3, APS

**Target/Specificity**

PSA 100%. PAP 0% AFP 0% Albumin 0% CEA 0% Glycoprotein 0% CA 19-9 0% Bilirubin 0% CA 125 0% Human IgG 0%.

**Reconstitution & Storage**

Store at 4°C. Do not freeze.

**Precautions**

KLK3 / PSA Antibody is for research use only and not for use in diagnostic or therapeutic procedures.

**KLK3 / PSA Antibody - Protein Information****Name** KLK3**Synonyms** APS**Function**

Hydrolyzes semenogelin-1 thus leading to the liquefaction of the seminal coagulum.

**Cellular Location**

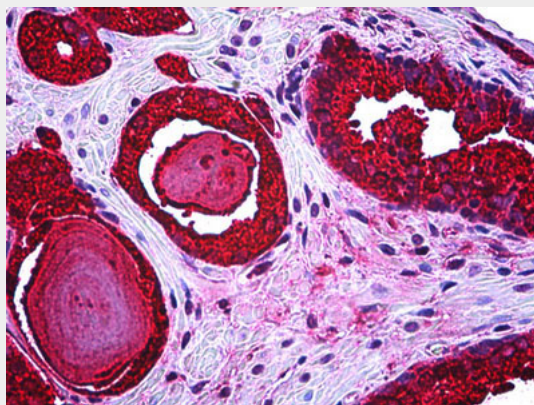
Secreted.

**KLK3 / PSA Antibody - Protocols**

Provided below are standard protocols that you may find useful for product applications.

- [Western Blot](#)
- [Blocking Peptides](#)
- [Dot Blot](#)
- [Immunohistochemistry](#)
- [Immunofluorescence](#)
- [Immunoprecipitation](#)
- [Flow Cytometry](#)
- [Cell Culture](#)

#### **KLK3 / PSA Antibody - Images**



Anti-KLK3 / PSA antibody IHC of human prostate.

#### **KLK3 / PSA Antibody - Background**

Hydrolyzes semenogelin-1 thus leading to the liquefaction of the seminal coagulum.

#### **KLK3 / PSA Antibody - References**

- Lundwall A., et al. FEBS Lett. 214:317-322(1987).  
Digby M.R., et al. Nucleic Acids Res. 17:2137-2137(1989).  
Klobeck H.-G., et al. Nucleic Acids Res. 17:3981-3981(1989).  
Lundwall A., et al. Biochem. Biophys. Res. Commun. 161:1151-1159(1989).  
Henttu P., et al. Biochem. Biophys. Res. Commun. 160:903-910(1989).