

GPR137C / TM7SF1L2 Antibody (aa256-305)
Rabbit Polyclonal Antibody
Catalog # ALS14215

Specification

GPR137C / TM7SF1L2 Antibody (aa256-305) - Product Information

Application	IF, WB, IHC
Primary Accession	Q8N3F9
Reactivity	Human
Host	Rabbit
Clonality	Polyclonal
Calculated MW	47kDa KDa

GPR137C / TM7SF1L2 Antibody (aa256-305) - Additional Information

Gene ID 283554

Other Names

Integral membrane protein GPR137C, Transmembrane 7 superfamily member 1-like 2 protein, GPR137C, TM7SF1L2

Target/Specificity

GPR137C Antibody detects endogenous levels of total GPR137C protein.

Reconstitution & Storage

Short term 4°C, long term aliquot and store at -20°C, avoid freeze thaw cycles.

Precautions

GPR137C / TM7SF1L2 Antibody (aa256-305) is for research use only and not for use in diagnostic or therapeutic procedures.

GPR137C / TM7SF1L2 Antibody (aa256-305) - Protein Information

Name GPR137C

Synonyms TM7SF1L2

Function

Lysosomal integral membrane protein that may regulate MTORC1 complex translocation to lysosomes.

Cellular Location

Lysosome membrane; Multi-pass membrane protein

Volume

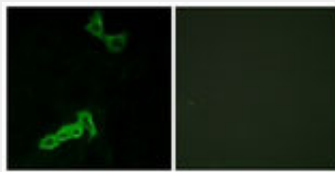
50 µl

GPR137C / TM7SF1L2 Antibody (aa256-305) - Protocols

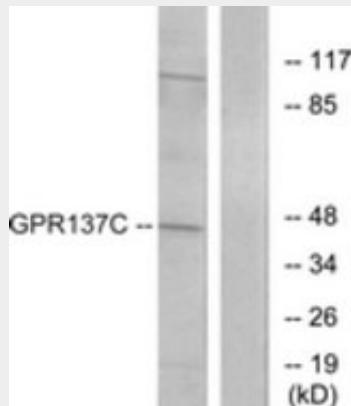
Provided below are standard protocols that you may find useful for product applications.

- [Western Blot](#)
- [Blocking Peptides](#)
- [Dot Blot](#)
- [Immunohistochemistry](#)
- [Immunofluorescence](#)
- [Immunoprecipitation](#)
- [Flow Cytometry](#)
- [Cell Culture](#)

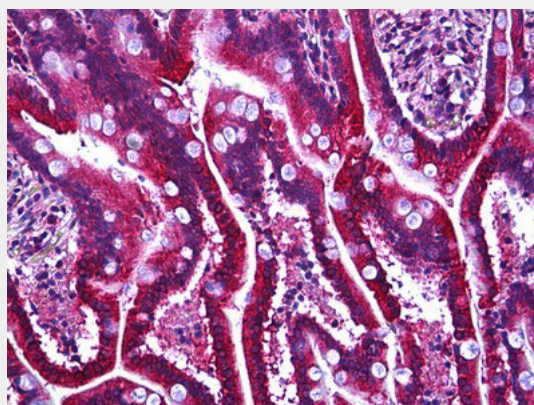
GPR137C / TM7SF1L2 Antibody (aa256-305) - Images



Immunofluorescence of MCF7 cells, using GPR137C Antibody.



Western blot of extracts from HepG2 cells, using GPR137C Antibody.



Anti-GPR137C antibody IHC of human intestine.

GPR137C / TM7SF1L2 Antibody (aa256-305) - References

Heilig R., et al. Nature 421:601-607(2003).

Vassilatis D.K., et al. Proc. Natl. Acad. Sci. U.S.A. 100:4903-4908(2003).
Bechtel S., et al. BMC Genomics 8:399-399(2007).