

TPX2 Antibody (aa301-350)
Rabbit Polyclonal Antibody
Catalog # ALS14206**Specification**

TPX2 Antibody (aa301-350) - Product Information

Application	WB, IHC
Primary Accession	O9ULW0
Reactivity	Human, Mouse
Host	Rabbit
Clonality	Polyclonal
Calculated MW	86kDa KDa

TPX2 Antibody (aa301-350) - Additional Information**Gene ID** 22974**Other Names**

Targeting protein for Xklp2, Differentially expressed in cancerous and non-cancerous lung cells 2, DIL-2, Hepatocellular carcinoma-associated antigen 519, Hepatocellular carcinoma-associated antigen 90, Protein fls353, Restricted expression proliferation-associated protein 100, p100, TPX2, C20orf1, C20orf2, DIL2, HCA519

Target/Specificity

TPX2 Antibody detects endogenous levels of total TPX2 protein.

Reconstitution & Storage

Short term 4°C, long term aliquot and store at -20°C, avoid freeze thaw cycles.

Precautions

TPX2 Antibody (aa301-350) is for research use only and not for use in diagnostic or therapeutic procedures.

TPX2 Antibody (aa301-350) - Protein Information**Name** TPX2**Synonyms** C20orf1, C20orf2, DIL2, HCA519**Function**

Spindle assembly factor required for normal assembly of mitotic spindles. Required for normal assembly of microtubules during apoptosis. Required for chromatin and/or kinetochore dependent microtubule nucleation. Mediates AURKA localization to spindle microtubules (PubMed: [18663142](http://www.uniprot.org/citations/18663142), PubMed: [19208764](http://www.uniprot.org/citations/19208764), PubMed: [37728657](http://www.uniprot.org/citations/37728657)). Activates AURKA by promoting its autophosphorylation at 'Thr-288' and protects this residue against dephosphorylation (PubMed: [18663142](http://www.uniprot.org/citations/18663142))

target="_blank">18663142, PubMed:19208764). TPX2 is inactivated upon binding to importin-alpha (PubMed:26165940). At the onset of mitosis, GOLGA2 interacts with importin-alpha, liberating TPX2 from importin-alpha, allowing TPX2 to activate AURKA kinase and stimulate local microtubule nucleation (PubMed:26165940).

Cellular Location

Nucleus. Cytoplasm, cytoskeleton, spindle. Cytoplasm, cytoskeleton, spindle pole. Note=During mitosis it is strictly associated with the spindle pole and with the mitotic spindle, whereas during S and G2, it is diffusely distributed throughout the nucleus. Is released from the nucleus in apoptotic cells and is detected on apoptotic microtubules.

Tissue Location

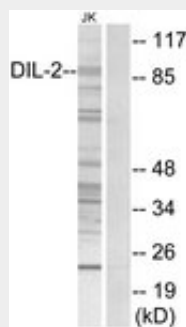
Expressed in lung carcinoma cell lines but not in normal lung tissues

TPX2 Antibody (aa301-350) - Protocols

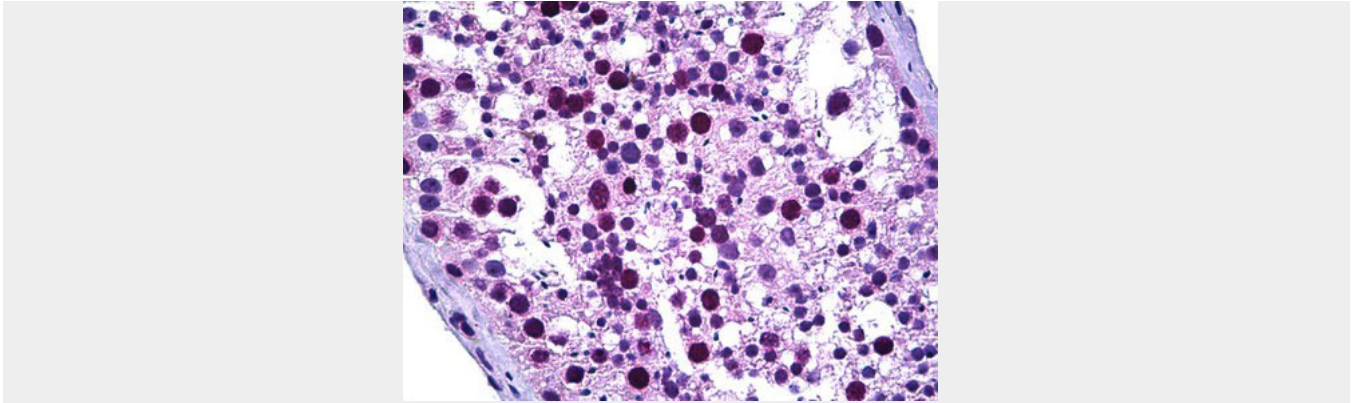
Provided below are standard protocols that you may find useful for product applications.

- [Western Blot](#)
- [Blocking Peptides](#)
- [Dot Blot](#)
- [Immunohistochemistry](#)
- [Immunofluorescence](#)
- [Immunoprecipitation](#)
- [Flow Cytometry](#)
- [Cell Culture](#)

TPX2 Antibody (aa301-350) - Images



Western blot of extracts from Jurkat cells, using TPX2 Antibody.



Anti-TPX2 antibody IHC of human testis.

TPX2 Antibody (aa301-350) - Background

Spindle assembly factor. Required for normal assembly of mitotic spindles. Required for normal assembly of microtubules during apoptosis. Required for chromatin and/or kinetochore dependent microtubule nucleation. Mediates AURKA localization to spindle microtubules. Activates AURKA by promoting its autophosphorylation at 'Thr-288' and protects this residue against dephosphorylation.

TPX2 Antibody (aa301-350) - References

- Manda R.,et al.Genomics 61:5-14(1999).
- Zhang Y.,et al.Cytogenet. Cell Genet. 84:182-183(1999).
- Nezu J.,et al.Submitted (MAR-1999) to the EMBL/GenBank/DDBJ databases.
- Wang Y.,et al.J. Immunol. 169:1102-1109(2002).
- Deloukas P.,et al.Nature 414:865-871(2001).