

LGALS3 / Galectin 3 Antibody (aa141-190)
Rabbit Polyclonal Antibody
Catalog # ALS14196

Specification

LGALS3 / Galectin 3 Antibody (aa141-190) - Product Information

Application	IF, WB, IHC
Primary Accession	P17931
Reactivity	Human, Mouse, Rat
Host	Rabbit
Clonality	Polyclonal
Calculated MW	26kDa KDa

LGALS3 / Galectin 3 Antibody (aa141-190) - Additional Information

Gene ID 3958

Other Names

Galectin-3, Gal-3, 35 kDa lectin, Carbohydrate-binding protein 35, CBP 35, Galactose-specific lectin 3, Galactoside-binding protein, GALBP, IgE-binding protein, L-31, Laminin-binding protein, Lectin L-29, Mac-2 antigen, LGALS3, MAC2

Target/Specificity

Galectin 3 Antibody detects endogenous levels of total Galectin 3 protein.

Reconstitution & Storage

Short term 4°C, long term aliquot and store at -20°C, avoid freeze thaw cycles.

Precautions

LGALS3 / Galectin 3 Antibody (aa141-190) is for research use only and not for use in diagnostic or therapeutic procedures.

LGALS3 / Galectin 3 Antibody (aa141-190) - Protein Information

Name LGALS3 ([HGNC:6563](#))

Synonyms MAC2

Function

Galactose-specific lectin which binds IgE. May mediate with the alpha-3, beta-1 integrin the stimulation by CSPG4 of endothelial cells migration. Together with DMBT1, required for terminal differentiation of columnar epithelial cells during early embryogenesis (By similarity). In the nucleus: acts as a pre-mRNA splicing factor. Involved in acute inflammatory responses including neutrophil activation and adhesion, chemoattraction of monocytes macrophages, opsonization of apoptotic neutrophils, and activation of mast cells. Together with TRIM16, coordinates the recognition of membrane damage with mobilization of the core autophagy regulators ATG16L1 and BECN1 in response to damaged endomembranes.

Cellular Location

Cytoplasm. Nucleus. Secreted. Note=Secreted by a non- classical secretory pathway and associates with the cell surface. Can be secreted; the secretion is dependent on protein unfolding and facilitated by the cargo receptor TMED10; it results in protein translocation from the cytoplasm into the ERGIC (endoplasmic reticulum- Golgi intermediate compartment) followed by vesicle entry and secretion (PubMed:32272059).

Tissue Location

A major expression is found in the colonic epithelium. It is also abundant in the activated macrophages. Expressed in fetal membranes.

Volume

50 μ l

LGALS3 / Galectin 3 Antibody (aa141-190) - Protocols

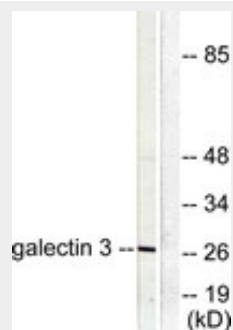
Provided below are standard protocols that you may find useful for product applications.

- [Western Blot](#)
- [Blocking Peptides](#)
- [Dot Blot](#)
- [Immunohistochemistry](#)
- [Immunofluorescence](#)
- [Immunoprecipitation](#)
- [Flow Cytometry](#)
- [Cell Culture](#)

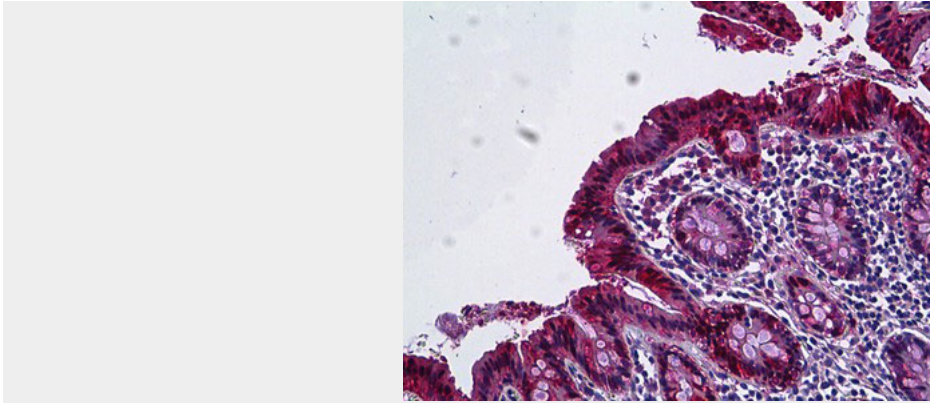
LGALS3 / Galectin 3 Antibody (aa141-190) - Images



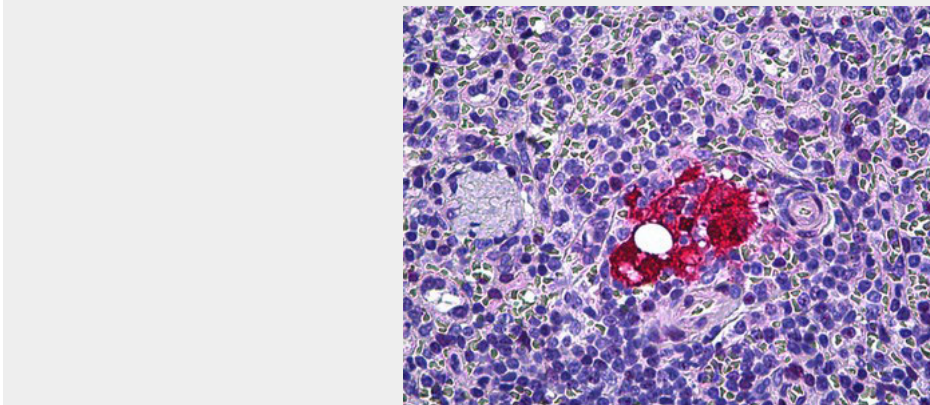
Immunofluorescence of NIH-3T3 cells, using Galectin 3 Antibody.



Western blot of extracts from HeLa cells, using Galectin 3 Antibody.



Anti-Galectin-3 antibody IHC of human colon, epithelium.



Anti-Galectin-3 antibody IHC of human spleen, macrophages.

LGALS3 / Galectin 3 Antibody (aa141-190) - Background

Galactose-specific lectin which binds IgE. May mediate with the alpha-3, beta-1 integrin the stimulation by CSPG4 of endothelial cells migration. Together with DMBT1, required for terminal differentiation of columnar epithelial cells during early embryogenesis (By similarity). In the nucleus: acts as a pre-mRNA splicing factor. Involved in acute inflammatory responses including neutrophil activation and adhesion, chemoattraction of monocytes macrophages, opsonization of apoptotic neutrophils, and activation of mast cells.

LGALS3 / Galectin 3 Antibody (aa141-190) - References

- Robertson M.W.,et al.Biochemistry 29:8093-8100(1990).
- Cherayil B.,et al.Proc. Natl. Acad. Sci. U.S.A. 87:7324-7328(1990).
- Oda Y.,et al.Gene 99:279-283(1991).
- Raz A.,et al.Cancer Res. 51:2173-2178(1991).
- Lotz M.M.,et al.Proc. Natl. Acad. Sci. U.S.A. 90:3466-3470(1993).