

DPYSL2 / CRMP2 Antibody (aa480-529)
Rabbit Polyclonal Antibody
Catalog # ALS14192

Specification

DPYSL2 / CRMP2 Antibody (aa480-529) - Product Information

Application	IF, WB, IHC
Primary Accession	Q16555
Reactivity	Human, Mouse, Rat
Host	Rabbit
Clonality	Polyclonal
Calculated MW	62kDa KDa

DPYSL2 / CRMP2 Antibody (aa480-529) - Additional Information

Gene ID 1808

Other Names

Dihydropyrimidinase-related protein 2, DRP-2, Collapsin response mediator protein 2, CRMP-2, N2A3, Unc-33-like phosphoprotein 2, ULIP-2, DPYSL2, CRMP2, ULIP2

Target/Specificity

DPYSL2 Antibody detects endogenous levels of total DPYSL2 protein.

Reconstitution & Storage

Short term 4°C, long term aliquot and store at -20°C, avoid freeze thaw cycles.

Precautions

DPYSL2 / CRMP2 Antibody (aa480-529) is for research use only and not for use in diagnostic or therapeutic procedures.

DPYSL2 / CRMP2 Antibody (aa480-529) - Protein Information

Name DPYSL2

Synonyms CRMP2, ULIP2

Function

Plays a role in neuronal development and polarity, as well as in axon growth and guidance, neuronal growth cone collapse and cell migration. Necessary for signaling by class 3 semaphorins and subsequent remodeling of the cytoskeleton. May play a role in endocytosis.

Cellular Location

Cytoplasm, cytosol. Cytoplasm, cytoskeleton. Membrane. Note=Tightly but non-covalently associated with membranes

Tissue Location

Ubiquitous.

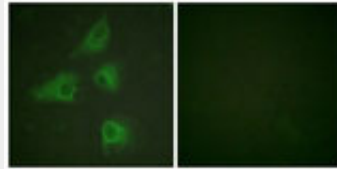
Volume
50 μ l

DPYSL2 / CRMP2 Antibody (aa480-529) - Protocols

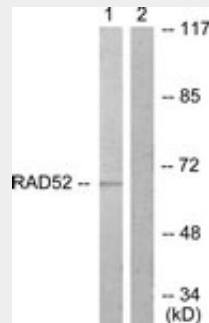
Provided below are standard protocols that you may find useful for product applications.

- [Western Blot](#)
- [Blocking Peptides](#)
- [Dot Blot](#)
- [Immunohistochemistry](#)
- [Immunofluorescence](#)
- [Immunoprecipitation](#)
- [Flow Cytometry](#)
- [Cell Culture](#)

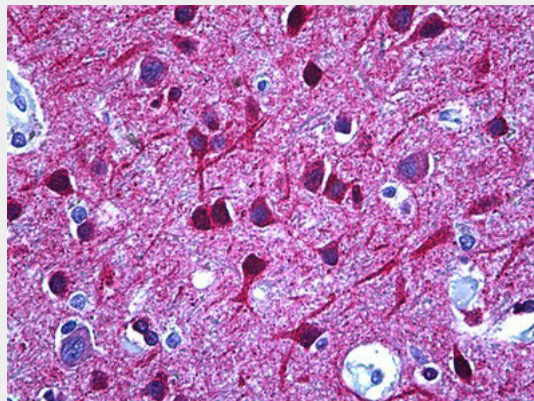
DPYSL2 / CRMP2 Antibody (aa480-529) - Images



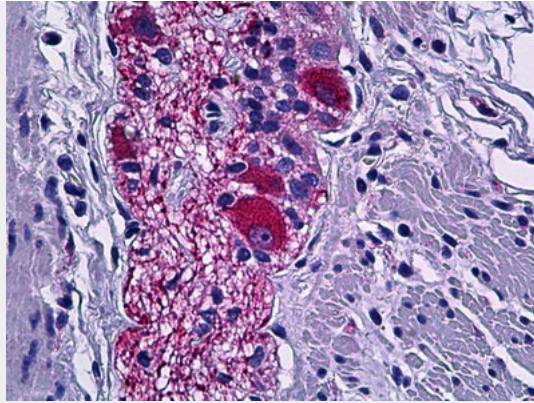
Immunofluorescence of HeLa cells, using DPYSL2 Antibody.



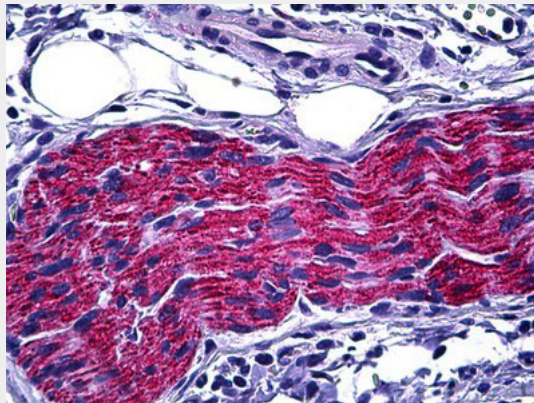
Western blot of extracts from A549 cells, treated with EGF 200 ng/ml 30', using DPYSL2 antibody.



Anti-CRMP-2 antibody IHC of human brain, cortex.



Anti-CRMP-2 antibody IHC of human colon, peripheral nerve.



Anti-CRMP-2 antibody IHC of human pancreas, peripheral nerve.

DPYSL2 / CRMP2 Antibody (aa480-529) - Background

Plays a role in neuronal development and polarity, as well as in axon growth and guidance, neuronal growth cone collapse and cell migration. Necessary for signaling by class 3 semaphorins and subsequent remodeling of the cytoskeleton. May play a role in endocytosis.

DPYSL2 / CRMP2 Antibody (aa480-529) - References

- Goshima Y., et al. Nature 376:509-514(1995).
- Hamajima N., et al. Gene 180:157-163(1996).
- Zhou J., et al. Submitted (MAR-1998) to the EMBL/GenBank/DDBJ databases.
- Kitamura K., et al. DNA Res. 6:291-297(1999).
- Ota T., et al. Nat. Genet. 36:40-45(2004).