

**CD45RA Antibody (clone MB1)**  
**Mouse Monoclonal Antibody**  
**Catalog # ALS14184**

**Specification**

---

**CD45RA Antibody (clone MB1) - Product Information**

Application	<b>IHC</b>
Reactivity	<b>Human</b>
Host	<b>Mouse</b>
Clonality	<b>Monoclonal</b>

**CD45RA Antibody (clone MB1) - Additional Information**

**Target/Specificity**

Lymphoma diagnosis. MB 1 reacts with all B-cells and up to 50% of the mature T-lymphocytes.  
Western Blot: antibody directed against 200, 110, 100, kD proteins.

**Reconstitution & Storage**

Long term: -20°C; Short term: +4°C. Avoid repeat freeze-thaw cycles.

**Precautions**

CD45RA Antibody (clone MB1) is for research use only and not for use in diagnostic or therapeutic procedures.

**CD45RA Antibody (clone MB1) - Protein Information**

**Volume**

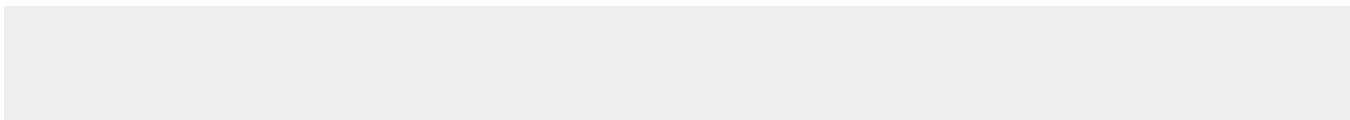
50 µl

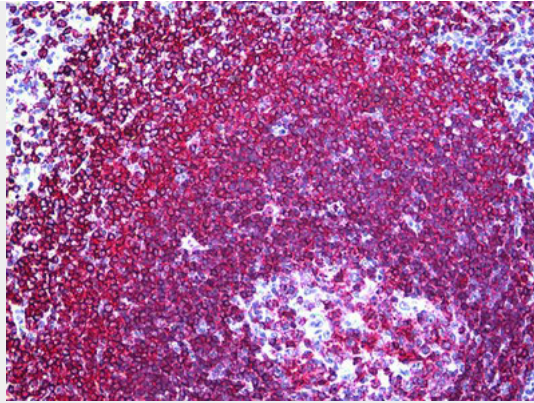
**CD45RA Antibody (clone MB1) - Protocols**

Provided below are standard protocols that you may find useful for product applications.

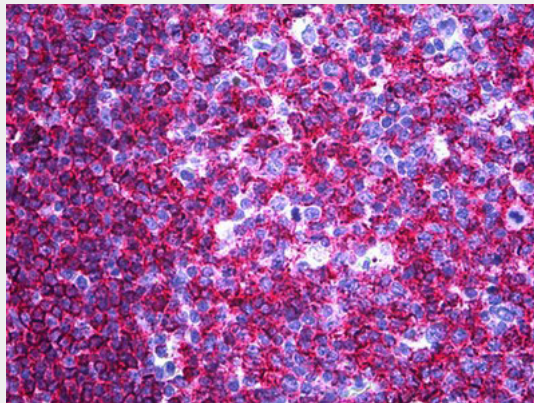
- [Western Blot](#)
- [Blocking Peptides](#)
- [Dot Blot](#)
- [Immunohistochemistry](#)
- [Immunofluorescence](#)
- [Immunoprecipitation](#)
- [Flow Cytometry](#)
- [Cell Culture](#)

**CD45RA Antibody (clone MB1) - Images**





Anti-CD45RA antibody IHC of human spleen.



Anti-CD45RA antibody IHC of human tonsil.