

CHGA / Chromogranin A Antibody (clone LK2H10)
Mouse Monoclonal Antibody
Catalog # ALS14183**Specification**

CHGA / Chromogranin A Antibody (clone LK2H10) - Product Information

Application	IHC
Primary Accession	P10645
Reactivity	Human
Host	Mouse
Clonality	Monoclonal
Calculated MW	51kDa KDa

CHGA / Chromogranin A Antibody (clone LK2H10) - Additional Information**Gene ID** 1113**Other Names**

Chromogranin-A, CgA, Pituitary secretory protein I, SP-I, Vasostatin-1, Vasostatin I, Vasostatin-2, Vasostatin II, EA-92, ES-43, Pancreastatin, SS-18, WA-8, WE-14, LF-19, AL-11, GV-19, GR-44, ER-37, CHGA

Target/Specificity

The antibody is specific for chromogranin A. Specificity was ascertained by immunoblotting and immunohistochemistry. The antibody predominantly reacts with a 68 kD protein. Antigen was isolated from human Pheochromocytoma. Antigen location, cytoplasm ...

Reconstitution & Storage

Short term 4°C, long term aliquot and store at -20°C, avoid freeze thaw cycles.

Precautions

CHGA / Chromogranin A Antibody (clone LK2H10) is for research use only and not for use in diagnostic or therapeutic procedures.

CHGA / Chromogranin A Antibody (clone LK2H10) - Protein Information**Name** CHGA**Function**

[Pancreastatin]: Strongly inhibits glucose induced insulin release from the pancreas. [Serpinin]: Regulates granule biogenesis in endocrine cells by up-regulating the transcription of protease nexin 1 (SERPINE2) via a cAMP-PKA-SP1 pathway. This leads to inhibition of granule protein degradation in the Golgi complex which in turn promotes granule formation.

Cellular Location

[Serpinin]: Secreted {ECO:0000250|UniProtKB:P26339}. Cytoplasmic vesicle, secretory vesicle {ECO:0000250|UniProtKB:P26339}. Note=Pyroglutaminated serpinin localizes to secretory vesicle. {ECO:0000250|UniProtKB:P26339}

Tissue Location

Detected in cerebrospinal fluid (at protein level) (PubMed:25326458). Detected in urine (at protein level) (PubMed:37453717).

Volume

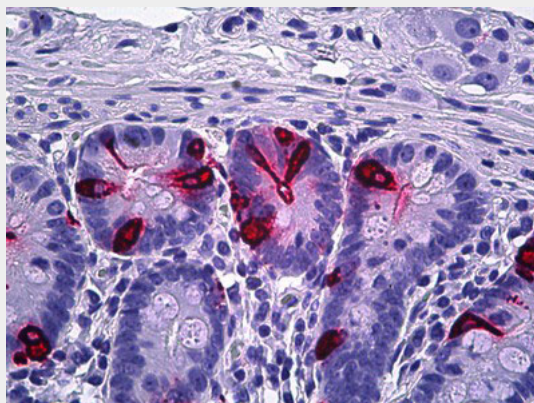
50 μ l

CHGA / Chromogranin A Antibody (clone LK2H10) - Protocols

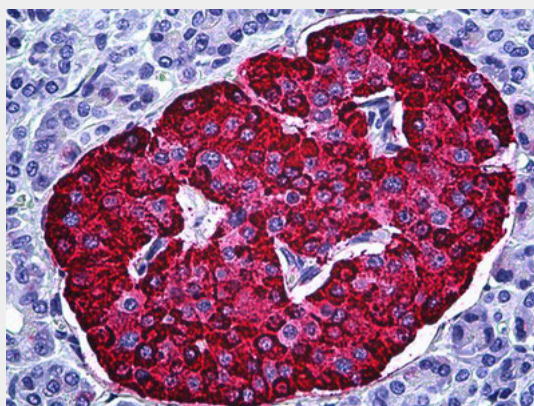
Provided below are standard protocols that you may find useful for product applications.

- [Western Blot](#)
- [Blocking Peptides](#)
- [Dot Blot](#)
- [Immunohistochemistry](#)
- [Immunofluorescence](#)
- [Immunoprecipitation](#)
- [Flow Cytometry](#)
- [Cell Culture](#)

CHGA / Chromogranin A Antibody (clone LK2H10) - Images



Anti-CHGA / Chromogranin A antibody IHC of human intestine.



Anti-CHGA / Chromogranin A antibody IHC of human pancreas, islets of Langerhans.

CHGA / Chromogranin A Antibody (clone LK2H10) - Background

Pancreastatin strongly inhibits glucose induced insulin release from the pancreas.

CHGA / Chromogranin A Antibody (clone LK2H10) - References

- Konecki D.S.,et al.J. Biol. Chem. 262:17026-17030(1987).
Helman L.J.,et al.J. Biol. Chem. 263:11559-11563(1988).
Mouland A.J.,et al.J. Biol. Chem. 269:6918-6926(1994).
Mouland A.J.,et al.Submitted (JUL-1999) to the EMBL/GenBank/DDBJ databases.
Kalnine N.,et al.Submitted (MAY-2003) to the EMBL/GenBank/DDBJ databases.