

NCAM / CD56 Antibody (clone 123C3)
Mouse Monoclonal Antibody
Catalog # ALS14182

Specification

NCAM / CD56 Antibody (clone 123C3) - Product Information

Application	IHC
Primary Accession	P13591
Reactivity	Human
Host	Mouse
Clonality	Monoclonal
Calculated MW	95kDa KDa

NCAM / CD56 Antibody (clone 123C3) - Additional Information

Gene ID 4684

Other Names

Neural cell adhesion molecule 1, N-CAM-1, NCAM-1, CD56, NCAM1, NCAM

Target/Specificity

The antibody recognizes a transmembrane glycoprotein of 140 and 180 kD which has been identified as NCAM (Neural Cell Adhesion Module). It is involved in intercellular adhesion and play a role in outgrowth of neurites and the development of the nervo ...

Reconstitution & Storage

Store at 4°C.

Precautions

NCAM / CD56 Antibody (clone 123C3) is for research use only and not for use in diagnostic or therapeutic procedures.

NCAM / CD56 Antibody (clone 123C3) - Protein Information

Name NCAM1 ([HGNC:7656](#))

Synonyms NCAM

Function

This protein is a cell adhesion molecule involved in neuron- neuron adhesion, neurite fasciculation, outgrowth of neurites, etc. (Microbial infection) Acts as a receptor for Zika virus.

Cellular Location

[Isoform 1]: Cell membrane; Single-pass type I membrane protein [Isoform 3]: Cell membrane; Lipid-anchor, GPI- anchor [Isoform 5]: Secreted.

Volume

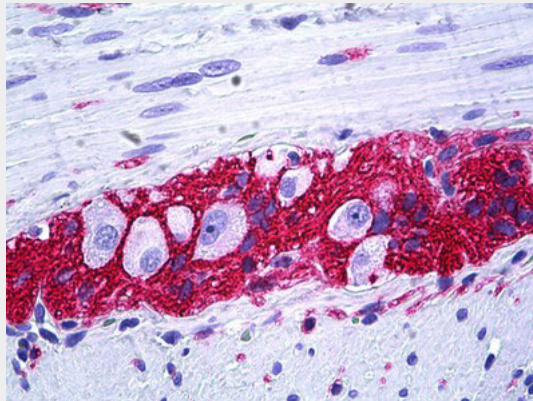
50 µl

NCAM / CD56 Antibody (clone 123C3) - Protocols

Provided below are standard protocols that you may find useful for product applications.

- [Western Blot](#)
- [Blocking Peptides](#)
- [Dot Blot](#)
- [Immunohistochemistry](#)
- [Immunofluorescence](#)
- [Immunoprecipitation](#)
- [Flow Cytometry](#)
- [Cell Culture](#)

NCAM / CD56 Antibody (clone 123C3) - Images



Anti-CD56 antibody IHC of human intestine, ganglion cells.

NCAM / CD56 Antibody (clone 123C3) - Background

This protein is a cell adhesion molecule involved in neuron-neuron adhesion, neurite fasciculation, outgrowth of neurites, etc.

NCAM / CD56 Antibody (clone 123C3) - References

- Barton C.H., et al. *Development* 104:165-173(1988).
Lanier L.L., et al. *J. Immunol.* 146:4421-4426(1991).
Saito S., et al. *Lung Cancer* 10:307-318(1994).
Ota T., et al. *Nat. Genet.* 36:40-45(2004).
Totoki Y., et al. Submitted (MAR-2005) to the EMBL/GenBank/DDBJ databases.