

**TIMP2 Antibody (clone 1C3)**  
**Mouse Monoclonal Antibody**  
**Catalog # ALS14163****Specification**

---

**TIMP2 Antibody (clone 1C3) - Product Information**

Application	IF, IHC
Primary Accession	<a href="#">P16035</a>
Reactivity	Human
Host	Mouse
Clonality	Monoclonal
Calculated MW	24kDa KDa

**TIMP2 Antibody (clone 1C3) - Additional Information****Gene ID** 7077**Other Names**

Metalloproteinase inhibitor 2, CSC-21K, Tissue inhibitor of metalloproteinases 2, TIMP-2, TIMP2

**Target/Specificity**

Human TIMP2

**Reconstitution & Storage**

Short term 4°C, long term aliquot and store at -20°C, avoid freeze thaw cycles.

**Precautions**

TIMP2 Antibody (clone 1C3) is for research use only and not for use in diagnostic or therapeutic procedures.

**TIMP2 Antibody (clone 1C3) - Protein Information****Name** TIMP2**Function**

Complexes with metalloproteinases (such as collagenases) and irreversibly inactivates them by binding to their catalytic zinc cofactor. Known to act on MMP-1, MMP-2, MMP-3, MMP-7, MMP-8, MMP-9, MMP-10, MMP-13, MMP-14, MMP-15, MMP-16 and MMP-19.

**Cellular Location**

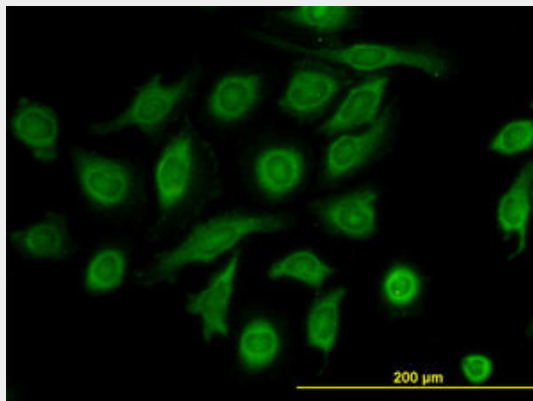
Secreted.

**TIMP2 Antibody (clone 1C3) - Protocols**

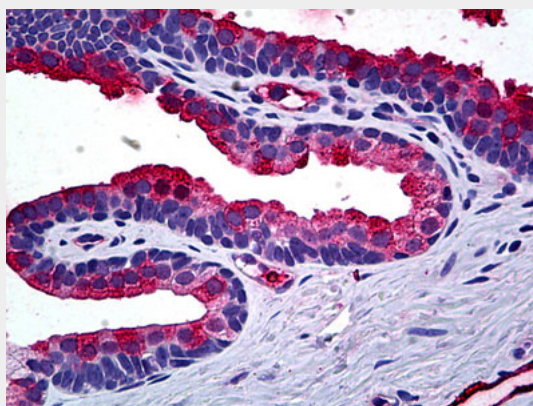
Provided below are standard protocols that you may find useful for product applications.

- [Western Blot](#)
- [Blocking Peptides](#)
- [Dot Blot](#)
- [Immunohistochemistry](#)
- [Immunofluorescence](#)
- [Immunoprecipitation](#)
- [Flow Cytometry](#)
- [Cell Culture](#)

### **TIMP2 Antibody (clone 1C3) - Images**



Immunofluorescence of monoclonal antibody to TIMP2 on HeLa cell. [antibody concentration 10 ug/ml]



Anti-TIMP2 antibody IHC of human prostate.

### **TIMP2 Antibody (clone 1C3) - Background**

Complexes with metalloproteinases (such as collagenases) and irreversibly inactivates them by binding to their catalytic zinc cofactor. Known to act on MMP-1, MMP-2, MMP-3, MMP-7, MMP-8, MMP-9, MMP-10, MMP-13, MMP-14, MMP-15, MMP-16 and MMP-19.

### **TIMP2 Antibody (clone 1C3) - References**

Stetler-Stevenson W.G., et al. *J. Biol. Chem.* 265:13933-13938(1990).  
Boone T.C., et al. *Proc. Natl. Acad. Sci. U.S.A.* 87:2800-2804(1990).  
Hammani K., et al. *J. Biol. Chem.* 271:25498-25505(1996).  
Malik K., et al. Submitted (AUG-1990) to the EMBL/GenBank/DDBJ databases.  
Stetler-Stevenson W.G., et al. *J. Biol. Chem.* 264:17374-17378(1989).