

**Mannose Receptor / CD206 Antibody (clone 5C11)**  
**Mouse Monoclonal Antibody**  
**Catalog # ALS14104**

**Specification**

---

**Mannose Receptor / CD206 Antibody (clone 5C11) - Product Information**

Application	WB, IHC
Primary Accession	<a href="#">P22897</a>
Reactivity	Human
Host	Mouse
Clonality	Monoclonal
Calculated MW	166kDa KDa

**Mannose Receptor / CD206 Antibody (clone 5C11) - Additional Information**

**Gene ID** 4360

**Other Names**

Macrophage mannose receptor 1, MMR, C-type lectin domain family 13 member D, C-type lectin domain family 13 member D-like, Macrophage mannose receptor 1-like protein 1, CD206, MRC1, CLEC13D, CLEC13DL, MRC1L1

**Target/Specificity**

Human MRC1

**Reconstitution & Storage**

Store at -20°C or lower. Aliquot to avoid repeated freezing and thawing.

**Precautions**

Mannose Receptor / CD206 Antibody (clone 5C11) is for research use only and not for use in diagnostic or therapeutic procedures.

**Mannose Receptor / CD206 Antibody (clone 5C11) - Protein Information**

**Name** MRC1

**Synonyms** CLEC13D, CLEC13DL, MRC1L1

**Function**

Mediates the endocytosis of glycoproteins by macrophages. Binds both sulfated and non-sulfated polysaccharide chains. (Microbial infection) Acts as a receptor for Dengue virus envelope protein E.

**Cellular Location**

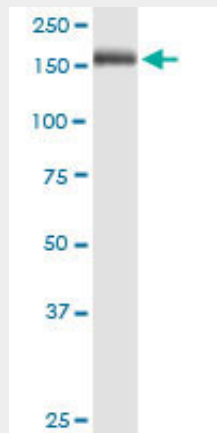
Endosome membrane; Single-pass type I membrane protein. Cell membrane; Single-pass type I membrane protein

## Mannose Receptor / CD206 Antibody (clone 5C11) - Protocols

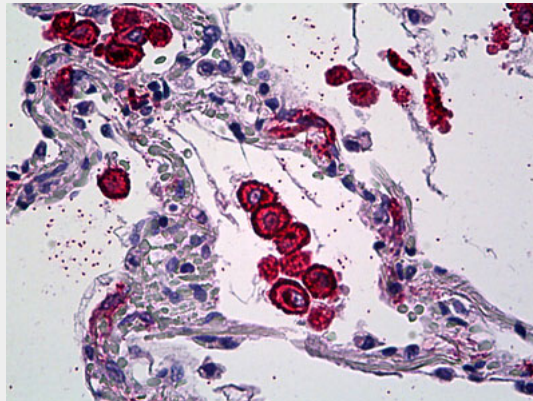
Provided below are standard protocols that you may find useful for product applications.

- [Western Blot](#)
- [Blocking Peptides](#)
- [Dot Blot](#)
- [Immunohistochemistry](#)
- [Immunofluorescence](#)
- [Immunoprecipitation](#)
- [Flow Cytometry](#)
- [Cell Culture](#)

## Mannose Receptor / CD206 Antibody (clone 5C11) - Images



MRC1 monoclonal antibody clone 5C11. Western blot of MRC1 expression in human pancreas.



Anti-CD206 antibody IHC of human lung, macrophages.

## Mannose Receptor / CD206 Antibody (clone 5C11) - Background

Mediates the endocytosis of glycoproteins by macrophages. Binds both sulfated and non-sulfated polysaccharide chains. Acts as phagocytic receptor for bacteria, fungi and other pathogens.

## Mannose Receptor / CD206 Antibody (clone 5C11) - References

Taylor M.E., et al. J. Biol. Chem. 265:12156-12162(1990).  
Ezekowitz R.A., et al. J. Exp. Med. 172:1785-1794(1990).  
Kim S.J., et al. Genomics 14:721-727(1992).

Deloukas P., et al. Nature 429:375-381(2004).  
Taylor M.E., et al. J. Biol. Chem. 267:1719-1726(1992).