

**CCT5 / TCP1 Epsilon Antibody (clone 4E5-4B1)**  
**Mouse Monoclonal Antibody**  
**Catalog # ALS14084****Specification**

---

**CCT5 / TCP1 Epsilon Antibody (clone 4E5-4B1) - Product Information**

Application	WB, IF, IHC
Primary Accession	<a href="#">P48643</a>
Reactivity	Human
Host	Mouse
Clonality	Monoclonal
Calculated MW	60kDa KDa

**CCT5 / TCP1 Epsilon Antibody (clone 4E5-4B1) - Additional Information****Gene ID** 22948**Other Names**

T-complex protein 1 subunit epsilon, TCP-1-epsilon, CCT-epsilon, CCT5, CCTE, KIAA0098

**Target/Specificity**

Human CCT5

**Reconstitution & Storage**

Short term 4°C, long term aliquot and store at -20°C, avoid freeze thaw cycles.

**Precautions**

CCT5 / TCP1 Epsilon Antibody (clone 4E5-4B1) is for research use only and not for use in diagnostic or therapeutic procedures.

**CCT5 / TCP1 Epsilon Antibody (clone 4E5-4B1) - Protein Information****Name** CCT5**Synonyms** CCTE, KIAA0098 {ECO:0000303|PubMed:77885}**Function**

Component of the chaperonin-containing T-complex (TRiC), a molecular chaperone complex that assists the folding of proteins upon ATP hydrolysis (PubMed:<a href="http://www.uniprot.org/citations/25467444" target="\_blank">25467444</a>). The TRiC complex mediates the folding of WRAP53/TCAB1, thereby regulating telomere maintenance (PubMed:<a href="http://www.uniprot.org/citations/25467444" target="\_blank">25467444</a>). As part of the TRiC complex may play a role in the assembly of BBSome, a complex involved in ciliogenesis regulating transports vesicles to the cilia (PubMed:<a href="http://www.uniprot.org/citations/20080638" target="\_blank">20080638</a>). The TRiC complex plays a role in the folding of actin and tubulin (Probable).

**Cellular Location**

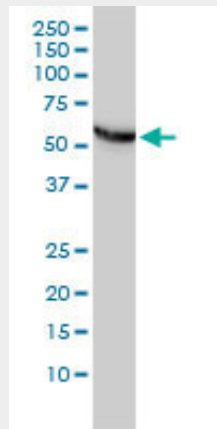
Cytoplasm. Cytoplasm, cytoskeleton, microtubule organizing center, centrosome

### CCT5 / TCP1 Epsilon Antibody (clone 4E5-4B1) - Protocols

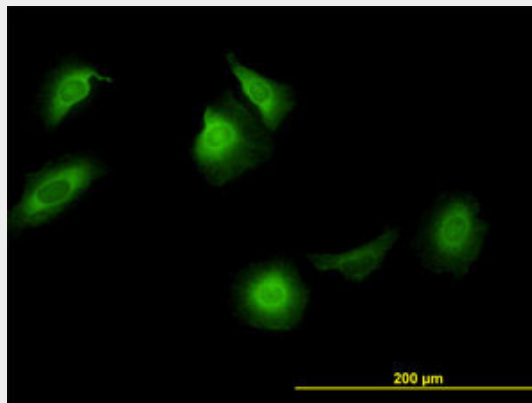
Provided below are standard protocols that you may find useful for product applications.

- [Western Blot](#)
- [Blocking Peptides](#)
- [Dot Blot](#)
- [Immunohistochemistry](#)
- [Immunofluorescence](#)
- [Immunoprecipitation](#)
- [Flow Cytometry](#)
- [Cell Culture](#)

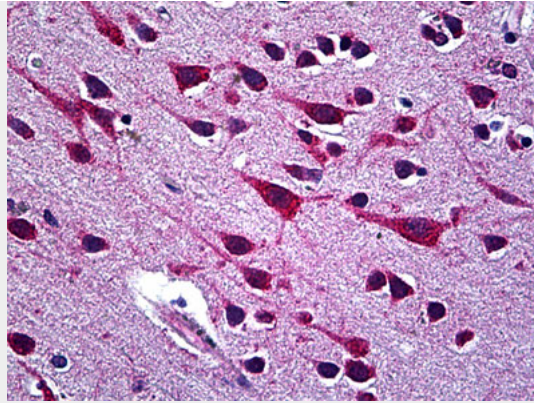
### CCT5 / TCP1 Epsilon Antibody (clone 4E5-4B1) - Images



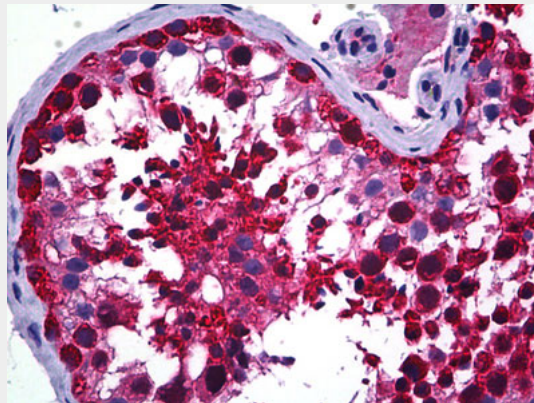
Western blot of CCT5 expression in HeLa cells with CCT5 monoclonal antibody, clone 4E5-4B1.



Immunofluorescence of monoclonal antibody to CCT5 on HeLa cell. [antibody concentration 10 ug/ml]



Anti-CCT5 antibody IHC of human brain, cortex.



Anti-CCT5 antibody IHC of human testis.

#### **CCT5 / TCP1 Epsilon Antibody (clone 4E5-4B1) - Background**

Molecular chaperone; assists the folding of proteins upon ATP hydrolysis. As part of the BBS/CCT complex may play a role in the assembly of BBSome, a complex involved in ciliogenesis regulating transports vesicles to the cilia. Known to play a role, in vitro, in the folding of actin and tubulin.

#### **CCT5 / TCP1 Epsilon Antibody (clone 4E5-4B1) - References**

- Nagase T.,et al.DNA Res. 2:37-43(1995).
- Ota T.,et al.Nat. Genet. 36:40-45(2004).
- Schmutz J.,et al.Nature 431:268-274(2004).
- Mural R.J.,et al.Submitted (SEP-2005) to the EMBL/GenBank/DDBJ databases.
- Bienvenut W.V.,et al.Submitted (MAR-2008) to UniProtKB.