

KLF11 Antibody (clone 10D8)
Mouse Monoclonal Antibody
Catalog # ALS14070**Specification**

KLF11 Antibody (clone 10D8) - Product Information

Application	WB, IF
Primary Accession	O14901
Reactivity	Human, Mouse
Host	Mouse
Clonality	Monoclonal
Calculated MW	55kDa KDa

KLF11 Antibody (clone 10D8) - Additional Information**Gene ID** 8462**Other Names**

Krueppel-like factor 11, Transforming growth factor-beta-inducible early growth response protein 2, TGFB-inducible early growth response protein 2, TIEG-2, KLF11, FKLF, TIEG2

Target/Specificity

Human KLF11

Reconstitution & Storage

Store at -20°C, avoid freeze thaw cycles.

Precautions

KLF11 Antibody (clone 10D8) is for research use only and not for use in diagnostic or therapeutic procedures.

KLF11 Antibody (clone 10D8) - Protein Information**Name** KLF11**Synonyms** FKLF, TIEG2**Function**

Transcription factor (PubMed: [10207080](http://www.uniprot.org/citations/10207080), PubMed: [9748269](http://www.uniprot.org/citations/9748269)). Activates the epsilon- and gamma-globin gene promoters and, to a much lower degree, the beta-globin gene and represses promoters containing SP1-like binding inhibiting cell growth (PubMed: [10207080](http://www.uniprot.org/citations/10207080), PubMed: [16131492](http://www.uniprot.org/citations/16131492), PubMed: [9748269](http://www.uniprot.org/citations/9748269)). Represses transcription of SMAD7 which enhances TGF-beta signaling (By similarity). Induces apoptosis (By similarity).

Cellular Location

Nucleus.

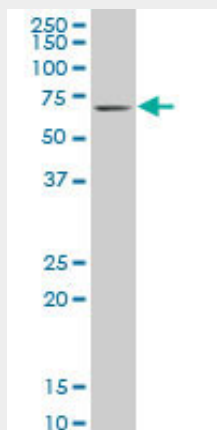
Tissue Location

Ubiquitous. Higher expression in erythroid cells.

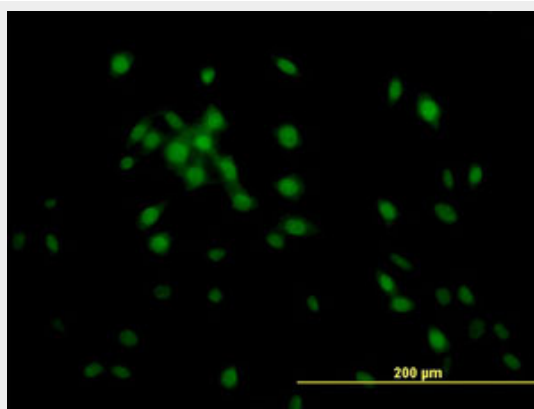
KLF11 Antibody (clone 10D8) - Protocols

Provided below are standard protocols that you may find useful for product applications.

- [Western Blot](#)
- [Blocking Peptides](#)
- [Dot Blot](#)
- [Immunohistochemistry](#)
- [Immunofluorescence](#)
- [Immunoprecipitation](#)
- [Flow Cytometry](#)
- [Cell Culture](#)

KLF11 Antibody (clone 10D8) - Images

KLF11 monoclonal antibody, clone 10D8 Western blot of KLF11 expression in NIH/3T3.



Immunofluorescence of monoclonal antibody to KLF11 on NIH/3T3 cell.

KLF11 Antibody (clone 10D8) - Background

Transcription factor. Activates the epsilon- and gamma- globin gene promoters and, to a much

lower degree, the beta-globin gene and represses promoters containing SP1-like binding inhibiting cell growth. Represses transcription of SMAD7 which enhances TGF-beta signaling. Induces apoptosis.

KLF11 Antibody (clone 10D8) - References

Cook T., et al. J. Biol. Chem. 273:25929-25936(1998).
Asano H., et al. Mol. Cell. Biol. 19:3571-3579(1999).
Schohy S., et al. Genomics 70:93-101(2000).
Ota T., et al. Nat. Genet. 36:40-45(2004).
Hillier L.W., et al. Nature 434:724-731(2005).