

PCSK1 Antibody (clone 3D2)
Mouse Monoclonal Antibody
Catalog # ALS14054

Specification

PCSK1 Antibody (clone 3D2) - Product Information

Application	WB, IF, IHC
Primary Accession	P29120
Reactivity	Human, Mouse, Rat
Host	Mouse
Clonality	Monoclonal
Calculated MW	84kDa KDa

PCSK1 Antibody (clone 3D2) - Additional Information

Gene ID 5122

Other Names

Neuroendocrine convertase 1, NEC 1, 3.4.21.93, Prohormone convertase 1, Proprotein convertase 1, PC1, PCSK1, NEC1

Target/Specificity

Human PCSK1

Reconstitution & Storage

Store at -20°C

Precautions

PCSK1 Antibody (clone 3D2) is for research use only and not for use in diagnostic or therapeutic procedures.

PCSK1 Antibody (clone 3D2) - Protein Information

Name PCSK1

Synonyms NEC1

Function

Involved in the processing of hormone and other protein precursors at sites comprised of pairs of basic amino acid residues. Substrates include POMC, renin, enkephalin, dynorphin, somatostatin, insulin and AGRP.

Cellular Location

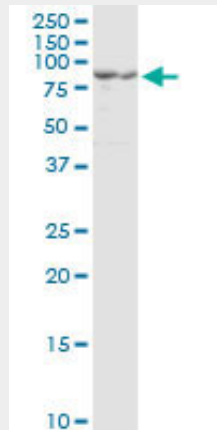
Cytoplasmic vesicle, secretory vesicle. Note=Localized in the secretion granules

PCSK1 Antibody (clone 3D2) - Protocols

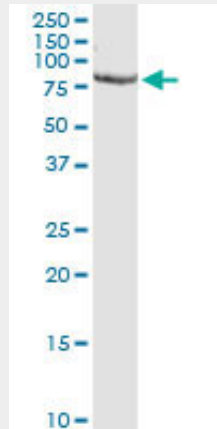
Provided below are standard protocols that you may find useful for product applications.

- [Western Blot](#)
- [Blocking Peptides](#)
- [Dot Blot](#)
- [Immunohistochemistry](#)
- [Immunofluorescence](#)
- [Immunoprecipitation](#)
- [Flow Cytometry](#)
- [Cell Culture](#)

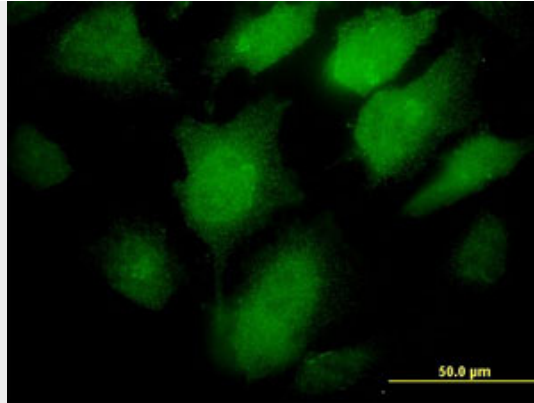
PCSK1 Antibody (clone 3D2) - Images



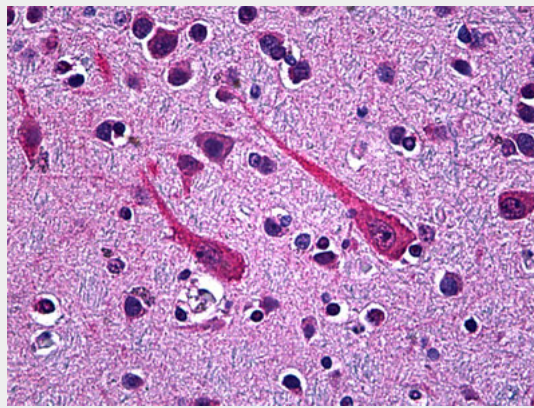
PCSK1 monoclonal antibody clone 3D2. Western blot of PCSK1 expression in PC-12.



PCSK1 monoclonal antibody clone 3D2. Western blot of PCSK1 expression in NIH/3T3.



Immunofluorescence of monoclonal antibody to PCSK1 on HeLa cell. [antibody concentration 30 ug/ml]



Anti-PCSK1 antibody IHC of human brain, cortex.

PCSK1 Antibody (clone 3D2) - Background

Involved in the processing of hormone and other protein precursors at sites comprised of pairs of basic amino acid residues. Substrates include POMC, renin, enkephalin, dynorphin, somatostatin and insulin.

PCSK1 Antibody (clone 3D2) - References

- Creemers J.W.M., et al. FEBS Lett. 300:82-88(1992).
- Seidah N.G., et al. DNA Cell Biol. 11:283-289(1992).
- Ohagi S., et al. Diabetes 45:897-901(1996).
- Ota T., et al. Nat. Genet. 36:40-45(2004).
- Schmutz J., et al. Nature 431:268-274(2004).