

GALT Antibody (clone 4C11)
Mouse Monoclonal Antibody
Catalog # ALS14053

Specification

GALT Antibody (clone 4C11) - Product Information

Application	WB, IHC
Primary Accession	P07902
Reactivity	Human
Host	Mouse
Clonality	Monoclonal
Calculated MW	43kDa KDa

GALT Antibody (clone 4C11) - Additional Information

Gene ID 2592

Other Names

Galactose-1-phosphate uridylyltransferase, Gal-1-P uridylyltransferase, 2.7.7.12, UDP-glucose--hexose-1-phosphate uridylyltransferase, GALT

Target/Specificity

Human GALT

Reconstitution & Storage

Short term 4°C, long term aliquot and store at -20°C, avoid freeze thaw cycles.

Precautions

GALT Antibody (clone 4C11) is for research use only and not for use in diagnostic or therapeutic procedures.

GALT Antibody (clone 4C11) - Protein Information

Name GALT

Function

Plays an important role in galactose metabolism.

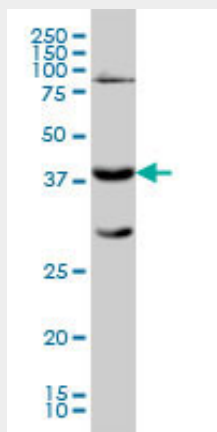
GALT Antibody (clone 4C11) - Protocols

Provided below are standard protocols that you may find useful for product applications.

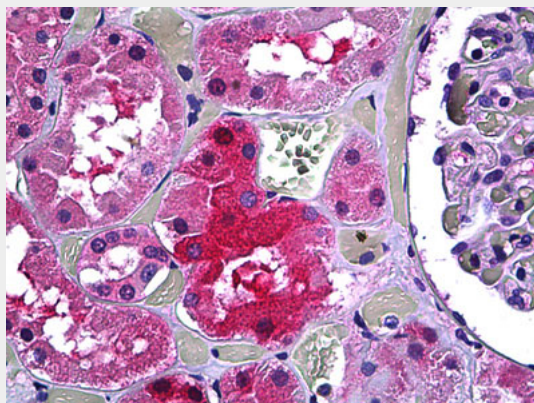
- [Western Blot](#)
- [Blocking Peptides](#)
- [Dot Blot](#)
- [Immunohistochemistry](#)

- [Immunofluorescence](#)
- [Immunoprecipitation](#)
- [Flow Cytometry](#)
- [Cell Culture](#)

GALT Antibody (clone 4C11) - Images



GALT monoclonal antibody clone 4C11 Western blot of GALT expression in K-562.



Anti-GALT antibody IHC of human kidney, tubules.

GALT Antibody (clone 4C11) - References

- Reichardt J.K.V., et al. *Mol. Biol. Med.* 5:107-122(1988).
Flach J.E., et al. *Mol. Biol. Med.* 7:365-369(1990).
Leslie N.D., et al. *Genomics* 14:474-480(1992).
Kalnine N., et al. Submitted (AUG-2003) to the EMBL/GenBank/DDBJ databases.
Ota T., et al. *Nat. Genet.* 36:40-45(2004).