

ACP2 / Acid Phosphatase 2 Antibody (clone M1-4A12)
Mouse Monoclonal Antibody
Catalog # ALS14017

Specification

ACP2 / Acid Phosphatase 2 Antibody (clone M1-4A12) - Product Information

Application	WB, IF, IHC
Primary Accession	P11117
Reactivity	Human
Host	Mouse
Clonality	Monoclonal
Calculated MW	48kDa KDa

ACP2 / Acid Phosphatase 2 Antibody (clone M1-4A12) - Additional Information

Gene ID 53

Other Names

Lysosomal acid phosphatase, LAP, 3.1.3.2, ACP2

Target/Specificity

Human ACP2

Reconstitution & Storage

Short term 4°C, long term aliquot and store at -20°C, avoid freeze thaw cycles.

Precautions

ACP2 / Acid Phosphatase 2 Antibody (clone M1-4A12) is for research use only and not for use in diagnostic or therapeutic procedures.

ACP2 / Acid Phosphatase 2 Antibody (clone M1-4A12) - Protein Information

Name ACP2

Cellular Location

Lysosome membrane; Single-pass membrane protein; Luminal side. Lysosome lumen. Note=The soluble form arises by proteolytic processing of the membrane-bound form

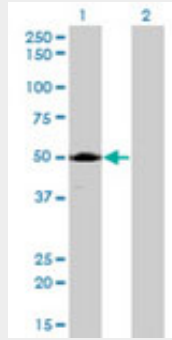
ACP2 / Acid Phosphatase 2 Antibody (clone M1-4A12) - Protocols

Provided below are standard protocols that you may find useful for product applications.

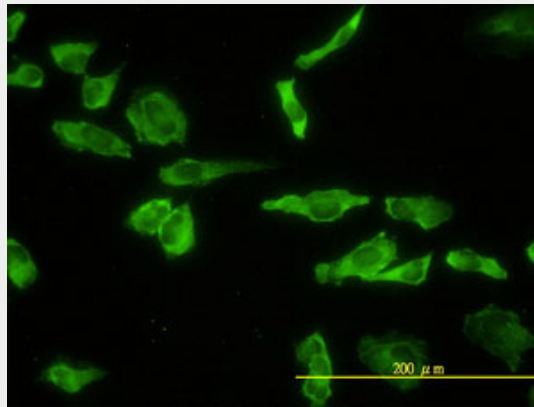
- [Western Blot](#)
- [Blocking Peptides](#)
- [Dot Blot](#)
- [Immunohistochemistry](#)

- [Immunofluorescence](#)
- [Immunoprecipitation](#)
- [Flow Cytometry](#)
- [Cell Culture](#)

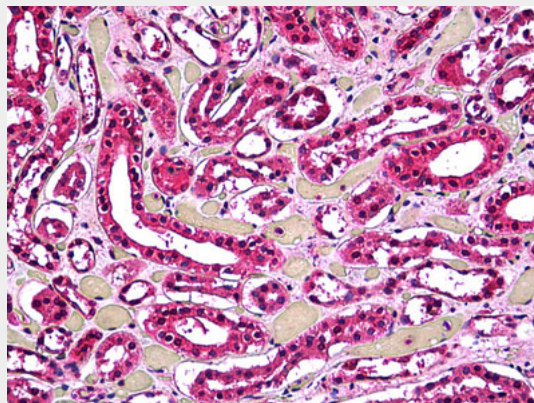
ACP2 / Acid Phosphatase 2 Antibody (clone M1-4A12) - Images



Western blot of ACP2 expression in transfected 293T cell line by ACP2 monoclonal antibody (M01),...



Immunofluorescence of monoclonal antibody to ACP2 on HeLa cell. [antibody concentration 10 ug/ml]



Anti-ACP2 / Acid Phosphatase 2 antibody IHC of human kidney, tubules.

ACP2 / Acid Phosphatase 2 Antibody (clone M1-4A12) - References

- Pohlmann R., et al. EMBO J. 7:2343-2350(1988).
Geier C., et al. Eur. J. Biochem. 183:611-616(1989).

Ota T., et al. Nat. Genet. 36:40-45(2004).
Taylor T.D., et al. Nature 440:497-500(2006).
Gottschalk S., et al. EMBO J. 8:3215-3219(1989).