

Alpha-1-Antichymotrypsin Antibody (clone 1E6)
Mouse Monoclonal Antibody
Catalog # ALS14015

Specification

Alpha-1-Antichymotrypsin Antibody (clone 1E6) - Product Information

Application	WB, IP, IHC
Primary Accession	P01011
Reactivity	Human
Host	Mouse
Clonality	Monoclonal
Calculated MW	48kDa KDa

Alpha-1-Antichymotrypsin Antibody (clone 1E6) - Additional Information

Gene ID 12

Other Names

Alpha-1-antichymotrypsin, ACT, Cell growth-inhibiting gene 24/25 protein, Serpin A3, Alpha-1-antichymotrypsin His-Pro-less, SERPINA3, AACT

Target/Specificity

Human SERPINA3

Reconstitution & Storage

Short term 4°C, long term aliquot and store at -20°C, avoid freeze thaw cycles.

Precautions

Alpha-1-Antichymotrypsin Antibody (clone 1E6) is for research use only and not for use in diagnostic or therapeutic procedures.

Alpha-1-Antichymotrypsin Antibody (clone 1E6) - Protein Information

Name SERPINA3

Synonyms AACT

Function

Although its physiological function is unclear, it can inhibit neutrophil cathepsin G and mast cell chymase, both of which can convert angiotensin-1 to the active angiotensin-2.

Cellular Location

Secreted.

Tissue Location

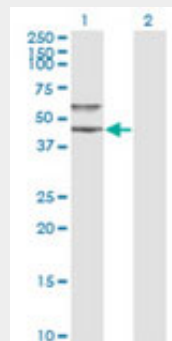
Plasma. Synthesized in the liver. Like the related alpha-1-antitrypsin, its concentration increases in the acute phase of inflammation or infection. Found in the amyloid plaques from the hippocampus of Alzheimer disease brains.

Alpha-1-Antichymotrypsin Antibody (clone 1E6) - Protocols

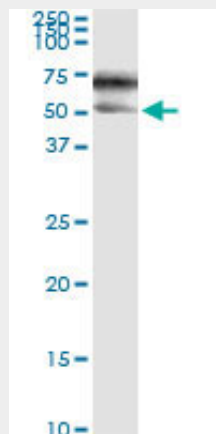
Provided below are standard protocols that you may find useful for product applications.

- [Western Blot](#)
- [Blocking Peptides](#)
- [Dot Blot](#)
- [Immunohistochemistry](#)
- [Immunofluorescence](#)
- [Immunoprecipitation](#)
- [Flow Cytometry](#)
- [Cell Culture](#)

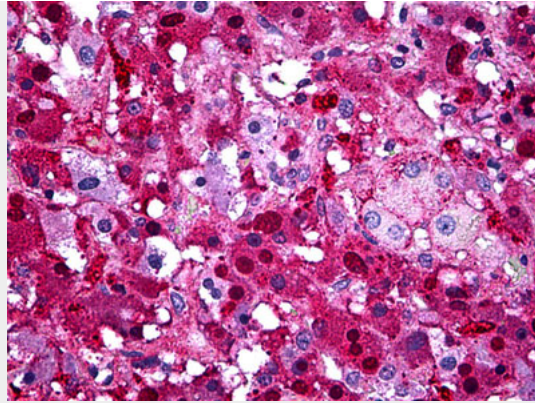
Alpha-1-Antichymotrypsin Antibody (clone 1E6) - Images



Western blot of SERPINA3 expression in transfected 293T cell line by SERPINA3 monoclonal...



Immunoprecipitation of SERPINA3 transfected lysate using anti-SERPINA3 monoclonal antibody and...



Anti-SERPINA3 antibody IHC of human adrenal.

Alpha-1-Antichymotrypsin Antibody (clone 1E6) - Background

Although its physiological function is unclear, it can inhibit neutrophil cathepsin G and mast cell chymase, both of which can convert angiotensin-1 to the active angiotensin-2.

Alpha-1-Antichymotrypsin Antibody (clone 1E6) - References

- Chandra T., et al. *Biochemistry* 22:5055-5061(1983).
- Poller W., et al. *Genomics* 17:740-743(1993).
- Kim J.W., et al. Submitted (DEC-2003) to the EMBL/GenBank/DDBJ databases.
- Ota T., et al. *Nat. Genet.* 36:40-45(2004).
- Totoki Y., et al. Submitted (MAR-2005) to the EMBL/GenBank/DDBJ databases.