

FOXO4 / AFX1 Antibody (N-Terminus)
Rabbit Polyclonal Antibody
Catalog # ALS13951**Specification**

FOXO4 / AFX1 Antibody (N-Terminus) - Product Information

Application	ICC, WB, IHC
Primary Accession	P98177
Reactivity	Human, Mouse, Rat
Host	Rabbit
Clonality	Polyclonal
Calculated MW	54kDa KDa

FOXO4 / AFX1 Antibody (N-Terminus) - Additional Information**Gene ID** 4303**Other Names**

Forkhead box protein O4, Fork head domain transcription factor AFX1, FOXO4, AFX, AFX1, MLLT7

Target/Specificity

Human FOXO4

Format

PBS, 0.02% sodium azide

Reconstitution & Storage

Short term 4°C, long term aliquot and store at -20°C, avoid freeze thaw cycles. Store undiluted.

Precautions

FOXO4 / AFX1 Antibody (N-Terminus) is for research use only and not for use in diagnostic or therapeutic procedures.

FOXO4 / AFX1 Antibody (N-Terminus) - Protein Information**Name** FOXO4**Synonyms** AFX, AFX1, MLLT7**Function**

Transcription factor involved in the regulation of the insulin signaling pathway. Binds to insulin-response elements (IREs) and can activate transcription of IGFBP1. Down-regulates expression of HIF1A and suppresses hypoxia-induced transcriptional activation of HIF1A-modulated genes. Also involved in negative regulation of the cell cycle. Involved in increased proteasome activity in embryonic stem cells (ESCs) by activating expression of PSMD11 in ESCs, leading to enhanced assembly of the 26S proteasome, followed by higher proteasome activity.

Cellular Location

Cytoplasm. Nucleus. Note=When phosphorylated, translocated from nucleus to cytoplasm. Dephosphorylation triggers nuclear translocation. Monoubiquitination increases nuclear localization. When deubiquitinated, translocated from nucleus to cytoplasm

Tissue Location

Heart, brain, placenta, lung, liver, skeletal muscle, kidney and pancreas. Isoform zeta is most abundant in the liver, kidney, and pancreas

Volume

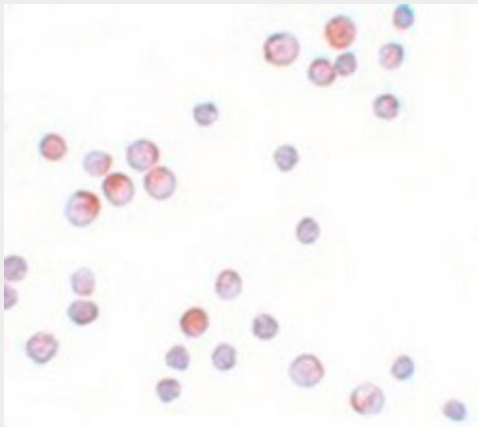
Array

FOXO4 / AFX1 Antibody (N-Terminus) - Protocols

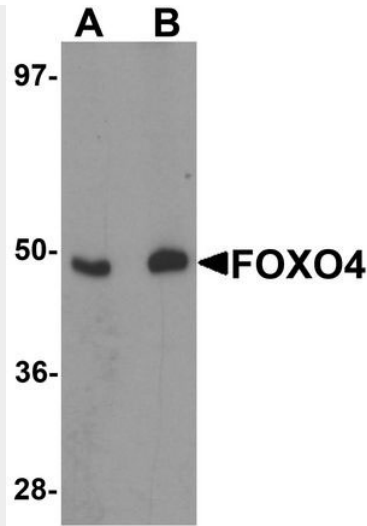
Provided below are standard protocols that you may find useful for product applications.

- [Western Blot](#)
- [Blocking Peptides](#)
- [Dot Blot](#)
- [Immunohistochemistry](#)
- [Immunofluorescence](#)
- [Immunoprecipitation](#)
- [Flow Cytometry](#)
- [Cell Culture](#)

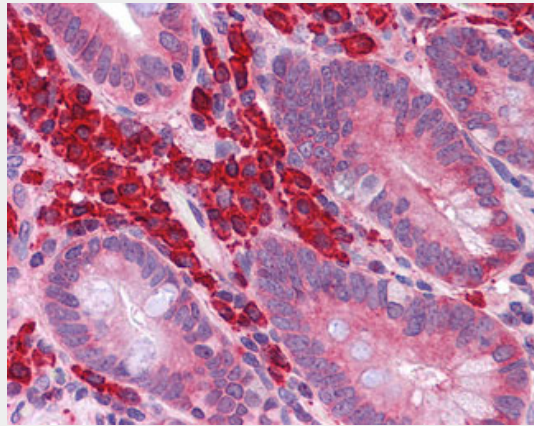
FOXO4 / AFX1 Antibody (N-Terminus) - Images



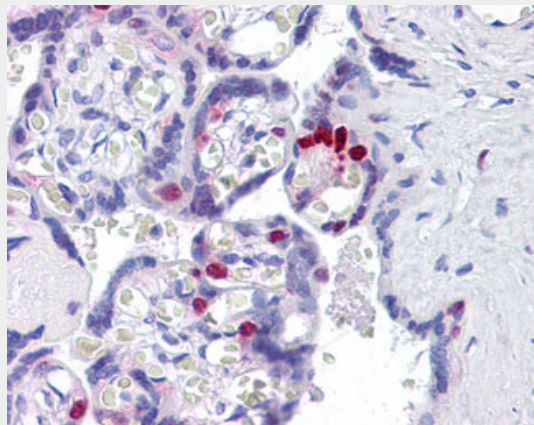
Immunocytochemistry of FOXO4 in HeLa cells with FOXO4 antibody at 10 ug/ml.



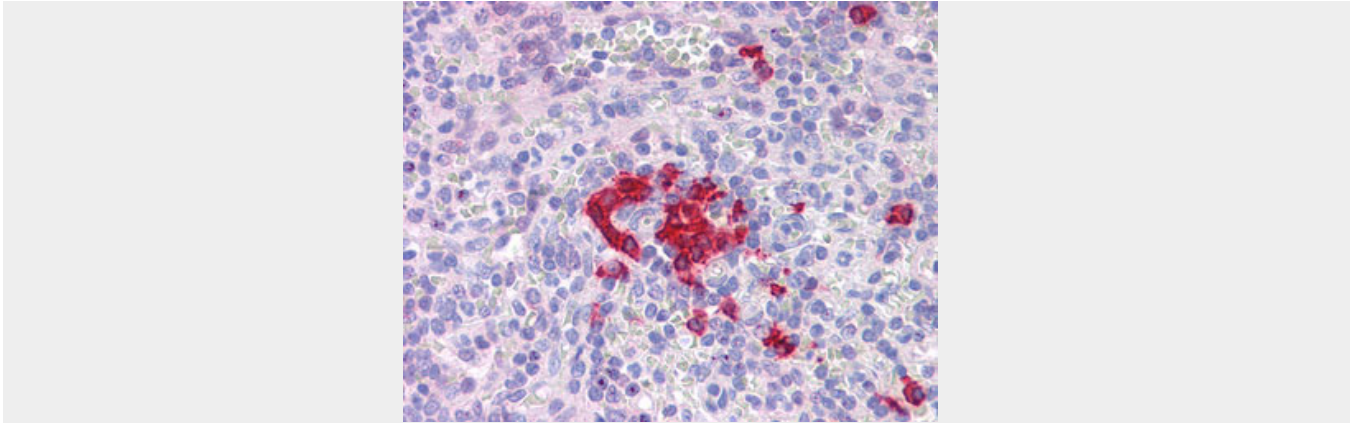
Western blot analysis of FOXO4 in HeLa cell lysate with FOXO4 antibody at (A) 0.5 and (B) 1 ug/ml.



Anti-FOXO4 antibody IHC of human small intestine.



Anti-FOXO4 antibody IHC of human placenta.



Anti-FOXO4 antibody IHC of human spleen.

FOXO4 / AFX1 Antibody (N-Terminus) - Background

Transcription factor involved in the regulation of the insulin signaling pathway. Binds to insulin-response elements (IREs) and can activate transcription of IGFBP1. Down-regulates expression of HIF1A and suppresses hypoxia-induced transcriptional activation of HIF1A-modulated genes. Also involved in negative regulation of the cell cycle. Involved in increased proteasome activity in embryonic stem cells (ESCs) by activating expression of PSMD11 in ESCs, leading to enhanced assembly of the 26S proteasome, followed by higher proteasome activity.

FOXO4 / AFX1 Antibody (N-Terminus) - References

- Peters U.,et al.Hum. Genet. 100:569-572(1997).
- Borkhardt A.,et al.Oncogene 14:195-202(1997).
- Yang Z.,et al.J. Biol. Chem. 277:8068-8075(2002).
- Ross M.T.,et al.Nature 434:325-337(2005).
- Mural R.J.,et al.Submitted (SEP-2005) to the EMBL/GenBank/DDBJ databases.