

CD40 Antibody (C-Terminus)
Rabbit Polyclonal Antibody
Catalog # ALS13948**Specification**

CD40 Antibody (C-Terminus) - Product Information

Application	IHC
Primary Accession	P25942
Reactivity	Human, Mouse, Rat
Host	Rabbit
Clonality	Polyclonal
Calculated MW	31kDa KDa

CD40 Antibody (C-Terminus) - Additional Information**Gene ID** 958**Other Names**

Tumor necrosis factor receptor superfamily member 5, B-cell surface antigen CD40, Bp50, CD40L receptor, CDw40, CD40, CD40, TNFRSF5

Reconstitution & Storage

Store at 2°C to 8°C degrees. Do not freeze.

Precautions

CD40 Antibody (C-Terminus) is for research use only and not for use in diagnostic or therapeutic procedures.

CD40 Antibody (C-Terminus) - Protein Information**Name** CD40**Synonyms** TNFRSF5**Function**

Receptor for TNFSF5/CD40LG (PubMed: [31331973](http://www.uniprot.org/citations/31331973) target="_blank">31331973). Transduces TRAF6- and MAP3K8-mediated signals that activate ERK in macrophages and B cells, leading to induction of immunoglobulin secretion (By similarity).

Cellular Location

[Isoform I]: Cell membrane; Single-pass type I membrane protein

Tissue Location

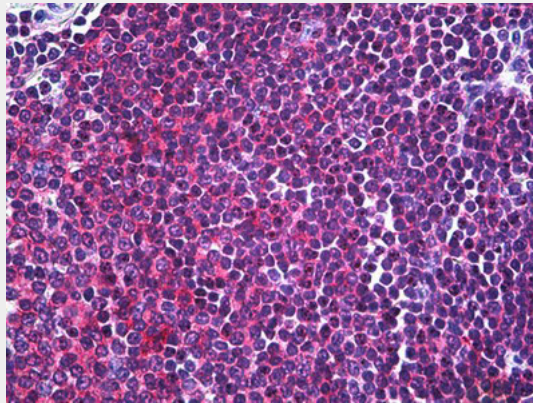
B-cells and in primary carcinomas.

CD40 Antibody (C-Terminus) - Protocols

Provided below are standard protocols that you may find useful for product applications.

- [Western Blot](#)
- [Blocking Peptides](#)
- [Dot Blot](#)
- [Immunohistochemistry](#)
- [Immunofluorescence](#)
- [Immunoprecipitation](#)
- [Flow Cytometry](#)
- [Cell Culture](#)

CD40 Antibody (C-Terminus) - Images



Anti-CD40 antibody IHC of human spleen.

CD40 Antibody (C-Terminus) - Background

Receptor for TNFSF5/CD40LG. Transduces TRAF6- and MAP3K8-mediated signals that activate ERK in macrophages and B cells, leading to induction of immunoglobulin secretion.

CD40 Antibody (C-Terminus) - References

- Stamenkovic I., et al. EMBO J. 8:1403-1410(1989).
Tone M., et al. Proc. Natl. Acad. Sci. U.S.A. 98:1751-1756(2001).
Kalnina N., et al. Submitted (OCT-2004) to the EMBL/GenBank/DDBJ databases.
Suzuki Y., et al. Submitted (APR-2005) to the EMBL/GenBank/DDBJ databases.
Livingston R.J., et al. Submitted (OCT-2006) to the EMBL/GenBank/DDBJ databases.