

MMP1 Antibody (C-Terminus)
Rabbit Polyclonal Antibody
Catalog # ALS13943**Specification**

MMP1 Antibody (C-Terminus) - Product Information

Application	IHC
Primary Accession	P03956
Reactivity	Human
Host	Rabbit
Clonality	Polyclonal
Calculated MW	54kDa KDa

MMP1 Antibody (C-Terminus) - Additional Information

Gene ID 4312

Other Names

Interstitial collagenase, 3.4.24.7, Fibroblast collagenase, Matrix metalloproteinase-1, MMP-1, 22 kDa interstitial collagenase, 27 kDa interstitial collagenase, MMP1, CLG

Reconstitution & Storage

Store at 2°C to 8°C degrees. Do not freeze.

Precautions

MMP1 Antibody (C-Terminus) is for research use only and not for use in diagnostic or therapeutic procedures.

MMP1 Antibody (C-Terminus) - Protein Information

Name MMP1

Synonyms CLG

Function

Cleaves collagens of types I, II, and III at one site in the helical domain. Also cleaves collagens of types VII and X (PubMed: [1645757](http://www.uniprot.org/citations/1645757) target="_blank">1645757, PubMed: [2153297](http://www.uniprot.org/citations/2153297) target="_blank">2153297, PubMed: [2557822](http://www.uniprot.org/citations/2557822) target="_blank">2557822). In case of HIV infection, interacts and cleaves the secreted viral Tat protein, leading to a decrease in neuronal Tat's mediated neurotoxicity (PubMed: [16807369](http://www.uniprot.org/citations/16807369) target="_blank">16807369).

Cellular Location

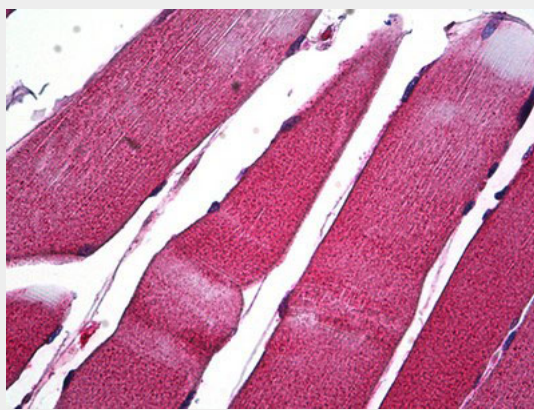
Secreted, extracellular space, extracellular matrix

MMP1 Antibody (C-Terminus) - Protocols

Provided below are standard protocols that you may find useful for product applications.

- [Western Blot](#)
- [Blocking Peptides](#)
- [Dot Blot](#)
- [Immunohistochemistry](#)
- [Immunofluorescence](#)
- [Immunoprecipitation](#)
- [Flow Cytometry](#)
- [Cell Culture](#)

MMP1 Antibody (C-Terminus) - Images



Anti-MMP1 antibody IHC of human skeletal muscle.

MMP1 Antibody (C-Terminus) - Background

Cleaves collagens of types I, II, and III at one site in the helical domain. Also cleaves collagens of types VII and X. In case of HIV infection, interacts and cleaves the secreted viral Tat protein, leading to a decrease in neuronal Tat's mediated neurotoxicity.

MMP1 Antibody (C-Terminus) - References

- Templeton N.S., et al. *Cancer Res.* 50:5431-5437(1990).
Whitham S.E., et al. *Biochem. J.* 240:913-916(1986).
Goldberg G.I., et al. *J. Biol. Chem.* 261:6600-6605(1986).
Lin D., et al. Submitted (DEC-1996) to the EMBL/GenBank/DDBJ databases.
Kalnine N., et al. Submitted (OCT-2004) to the EMBL/GenBank/DDBJ databases.