

ATG9B Antibody (C-Terminus)
Rabbit Polyclonal Antibody
Catalog # ALS13942**Specification**

ATG9B Antibody (C-Terminus) - Product Information

Application	ICC, IF, WB, IHC
Primary Accession	Q674R7
Reactivity	Human, Mouse, Rat
Host	Rabbit
Clonality	Polyclonal
Calculated MW	101kDa KDa

ATG9B Antibody (C-Terminus) - Additional Information**Gene ID** 285973**Other Names**

Autophagy-related protein 9B, APG9-like 2, Nitric oxide synthase 3-overlapping antisense gene protein, Protein sONE, ATG9B, APG9L2, NOS3AS

Target/Specificity

Human ATG9B

Reconstitution & Storage

Short term 4°C, long term aliquot and store at -20°C, avoid freeze thaw cycles. Store undiluted.

Precautions

ATG9B Antibody (C-Terminus) is for research use only and not for use in diagnostic or therapeutic procedures.

ATG9B Antibody (C-Terminus) - Protein Information**Name** ATG9B**Function**

Phospholipid scramblase involved in autophagy by mediating autophagosomal membrane expansion. Cycles between the preautophagosomal structure/phagophore assembly site (PAS) and the cytoplasmic vesicle pool and supplies membrane for the growing autophagosome. Lipid scramblase activity plays a key role in preautophagosomal structure/phagophore assembly by distributing the phospholipids that arrive through ATG2 (ATG2A or ATG2B) from the cytoplasmic to the luminal leaflet of the bilayer, thereby driving autophagosomal membrane expansion (By similarity). In addition to autophagy, also plays a role in necrotic cell death (By similarity).

Cellular Location

Preautophagosomal structure membrane; Multi-pass membrane protein. Note=Under amino acid starvation or rapamycin treatment, redistributes from a juxtannuclear clustered pool to a dispersed peripheral cytosolic pool (PubMed:18936157). The starvation-induced redistribution depends on

ULK1 and ATG13 (PubMed:18936157).

Tissue Location

Highly expressed in placenta (trophoblast cells) and pituitary gland. Not expressed in vascular endothelial

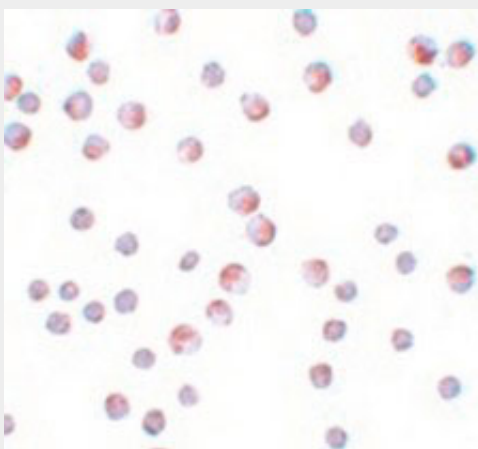
Volume

250 μ l

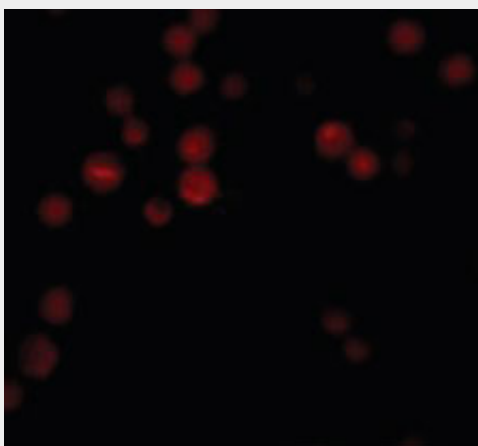
ATG9B Antibody (C-Terminus) - Protocols

Provided below are standard protocols that you may find useful for product applications.

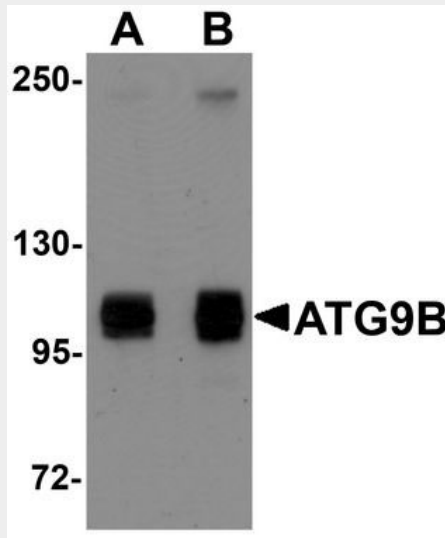
- [Western Blot](#)
- [Blocking Peptides](#)
- [Dot Blot](#)
- [Immunohistochemistry](#)
- [Immunofluorescence](#)
- [Immunoprecipitation](#)
- [Flow Cytometry](#)
- [Cell Culture](#)

ATG9B Antibody (C-Terminus) - Images

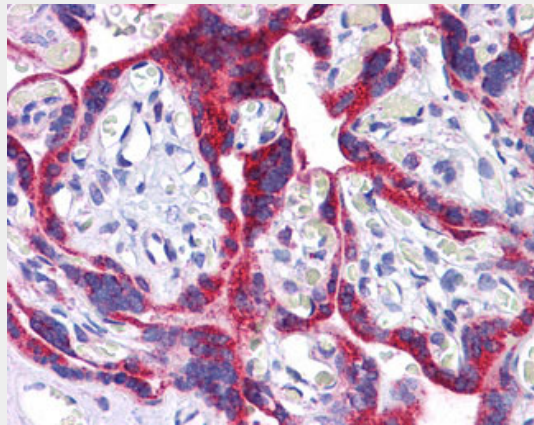
Immunocytochemistry of ATG9B in HeLa cells with ATG9B antibody at 10 ug/ml.



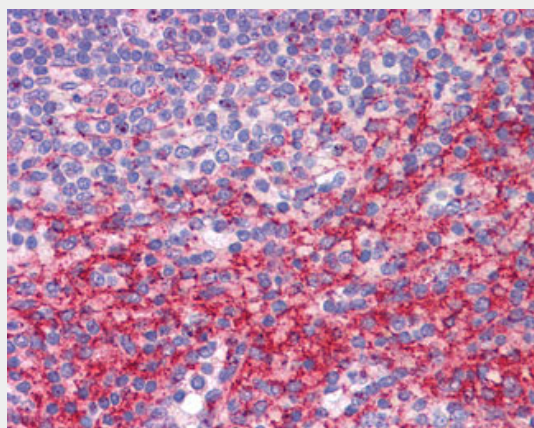
Immunofluorescence of ATG9B in HeLa cells with ATG9B antibody at 20 ug/ml.



Western blot analysis of ATG9B in HeLa cell lysate with ATG9B antibody at (A) 1 and (B) 2 ug/ml.



Anti-ATG9B / APG9L2 antibody IHC of human placenta.



Anti-ATG9B / APG9L2 antibody IHC of human spleen.

ATG9B Antibody (C-Terminus) - Background

Involved in autophagy and cytoplasm to vacuole transport (Cvt) vesicle formation. Plays a key role in the organization of the preautophagosomal structure/phagophore assembly site (PAS), the nucleating site for formation of the sequestering vesicle (By similarity).

ATG9B Antibody (C-Terminus) - References

- Robb G.B.,et al.J. Biol. Chem. 279:37982-37996(2004).
Ota T.,et al.Nat. Genet. 36:40-45(2004).
Hillier L.W.,et al.Nature 424:157-164(2003).
Yamada T.,et al.J. Biol. Chem. 280:18283-18290(2005).
Fish J.E.,et al.J. Biol. Chem. 282:15652-15666(2007).