

ESA / EPCAM Antibody (clone Ber-EP4)
Mouse Monoclonal Antibody
Catalog # ALS13879**Specification**

ESA / EPCAM Antibody (clone Ber-EP4) - Product Information

Application	IHC
Primary Accession	P16422
Reactivity	Human
Host	Mouse
Clonality	Monoclonal
Calculated MW	35kDa KDa

ESA / EPCAM Antibody (clone Ber-EP4) - Additional Information**Gene ID** 4072**Other Names**

Epithelial cell adhesion molecule, Ep-CAM, Adenocarcinoma-associated antigen, Cell surface glycoprotein Trop-1, Epithelial cell surface antigen, Epithelial glycoprotein, EGP, Epithelial glycoprotein 314, EGP314, hEGP314, KS 1/4 antigen, KSA, Major gastrointestinal tumor-associated protein GA733-2, Tumor-associated calcium signal transducer 1, CD326, EPCAM, GA733-2, M1S2, M4S1, MIC18, TACSTD1, TROP1

Reconstitution & Storage

Stable for 24 months when stored at 2-8°C.

Precautions

ESA / EPCAM Antibody (clone Ber-EP4) is for research use only and not for use in diagnostic or therapeutic procedures.

ESA / EPCAM Antibody (clone Ber-EP4) - Protein Information**Name** EPCAM**Synonyms** GA733-2, M1S2, M4S1, MIC18, TACSTD1, TRO**Function**

May act as a physical homophilic interaction molecule between intestinal epithelial cells (IECs) and intraepithelial lymphocytes (IELs) at the mucosal epithelium for providing immunological barrier as a first line of defense against mucosal infection. Plays a role in embryonic stem cells proliferation and differentiation. Up-regulates the expression of FABP5, MYC and cyclins A and E.

Cellular Location

Lateral cell membrane; Single-pass type I membrane protein. Cell junction, tight junction.
Note=Colocalizes with CLDN7 at the lateral cell membrane and tight junction

Tissue Location

Highly and selectively expressed by undifferentiated rather than differentiated embryonic stem cells (ESC) Levels rapidly diminish as soon as ESC's differentiate (at protein levels). Expressed in almost all epithelial cell membranes but not on mesodermal or neural cell membranes. Found on the surface of adenocarcinoma.

Volume

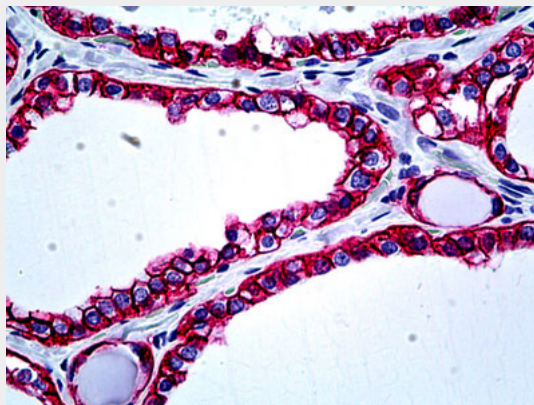
250 μ l

ESA / EPCAM Antibody (clone Ber-EP4) - Protocols

Provided below are standard protocols that you may find useful for product applications.

- [Western Blot](#)
- [Blocking Peptides](#)
- [Dot Blot](#)
- [Immunohistochemistry](#)
- [Immunofluorescence](#)
- [Immunoprecipitation](#)
- [Flow Cytometry](#)
- [Cell Culture](#)

ESA / EPCAM Antibody (clone Ber-EP4) - Images



Anti-EPCAM antibody IHC of human thyroid.

ESA / EPCAM Antibody (clone Ber-EP4) - Background

May act as a physical homophilic interaction molecule between intestinal epithelial cells (IECs) and intraepithelial lymphocytes (IELs) at the mucosal epithelium for providing immunological barrier as a first line of defense against mucosal infection. Plays a role in embryonic stem cells proliferation and differentiation. Up-regulates the expression of FABP5, MYC and cyclins A and E.

ESA / EPCAM Antibody (clone Ber-EP4) - References

- Strnad J., et al. *Cancer Res.* 49:314-317(1989).
Perez M.S., et al. *J. Immunol.* 142:3662-3667(1989).
Simon B., et al. *Proc. Natl. Acad. Sci. U.S.A.* 87:2755-2759(1990).
Szala S., et al. *Proc. Natl. Acad. Sci. U.S.A.* 87:3542-3546(1990).
Linnenbach A.J., et al. *Mol. Cell. Biol.* 13:1507-1515(1993).