

ACTA1 / ASMA Antibody (clone 5C5.F8.C7)
Mouse Monoclonal Antibody
Catalog # ALS13876

Specification

ACTA1 / ASMA Antibody (clone 5C5.F8.C7) - Product Information

Application	IHC
Primary Accession	P68133
Reactivity	Human, Rat, Rabbit, Sheep, Bovine, Guinea Pig
Host	Mouse
Clonality	Monoclonal
Calculated MW	42kDa KDa

ACTA1 / ASMA Antibody (clone 5C5.F8.C7) - Additional Information

Gene ID 58

Other Names

Actin, alpha skeletal muscle, Alpha-actin-1, ACTA1, ACTA

Target/Specificity

N-terminal decapeptide

Reconstitution & Storage

Stable for 24 months when stored at 2-8°C.

Precautions

ACTA1 / ASMA Antibody (clone 5C5.F8.C7) is for research use only and not for use in diagnostic or therapeutic procedures.

ACTA1 / ASMA Antibody (clone 5C5.F8.C7) - Protein Information

Name ACTA1

Synonyms ACTA

Function

Actins are highly conserved proteins that are involved in various types of cell motility and are ubiquitously expressed in all eukaryotic cells.

Cellular Location

Cytoplasm, cytoskeleton.

Volume

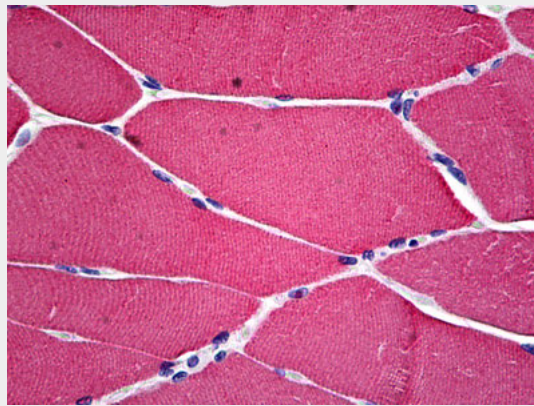
125 µl

ACTA1 / ASMA Antibody (clone 5C5.F8.C7) - Protocols

Provided below are standard protocols that you may find useful for product applications.

- [Western Blot](#)
- [Blocking Peptides](#)
- [Dot Blot](#)
- [Immunohistochemistry](#)
- [Immunofluorescence](#)
- [Immunoprecipitation](#)
- [Flow Cytometry](#)
- [Cell Culture](#)

ACTA1 / ASMA Antibody (clone 5C5.F8.C7) - Images



Anti-Actin, Muscle antibody IHC of human skeletal muscle.

ACTA1 / ASMA Antibody (clone 5C5.F8.C7) - Background

Actins are highly conserved proteins that are involved in various types of cell motility and are ubiquitously expressed in all eukaryotic cells.

ACTA1 / ASMA Antibody (clone 5C5.F8.C7) - References

- Hanauer A., et al. *Nucleic Acids Res.* 11:3503-3516(1983).
Taylor A., et al. *Genomics* 3:323-336(1988).
Nowak K.J., et al. *Nat. Genet.* 23:208-212(1999).
Ebert L., et al. Submitted (JUN-2004) to the EMBL/GenBank/DDBJ databases.
Gregory S.G., et al. *Nature* 441:315-321(2006).