

TOP2A / Topoisomerase II Alpha Antibody (clone Ki-S1)
Mouse Monoclonal Antibody
Catalog # ALS13875**Specification**

TOP2A / Topoisomerase II Alpha Antibody (clone Ki-S1) - Product Information

Application	IHC
Primary Accession	P11388
Reactivity	Human
Host	Mouse
Clonality	Monoclonal
Calculated MW	174kDa KDa

TOP2A / Topoisomerase II Alpha Antibody (clone Ki-S1) - Additional Information**Gene ID** 7153**Other Names**

DNA topoisomerase 2-alpha, 5.99.1.3, DNA topoisomerase II, alpha isozyme, TOP2A, TOP2

Reconstitution & Storage

Stable for 24 months when stored at 2-8°C.

Precautions

TOP2A / Topoisomerase II Alpha Antibody (clone Ki-S1) is for research use only and not for use in diagnostic or therapeutic procedures.

TOP2A / Topoisomerase II Alpha Antibody (clone Ki-S1) - Protein Information**Name** TOP2A**Synonyms** TOP2**Function**

Key decatenating enzyme that alters DNA topology by binding to two double-stranded DNA molecules, generating a double-stranded break in one of the strands, passing the intact strand through the broken strand, and religating the broken strand (PubMed:17567603, PubMed:18790802, PubMed:22013166, PubMed:22323612). May play a role in regulating the period length of BMAL1 transcriptional oscillation (By similarity).

Cellular Location

Cytoplasm. Nucleus, nucleoplasm. Nucleus. Nucleus, nucleolus

Tissue Location

Expressed in the tonsil, spleen, lymph node, thymus, skin, pancreas, testis, colon, kidney, liver,

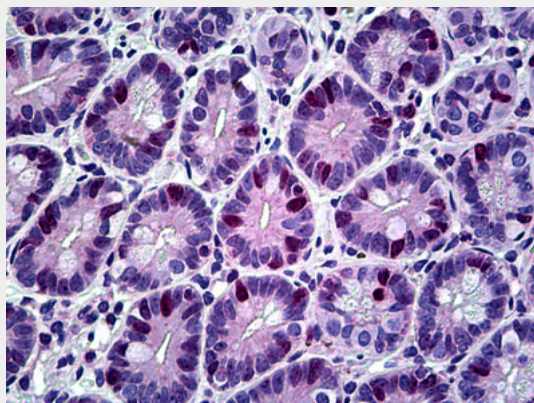
brain and lung (PubMed:9155056). Also found in high-grade lymphomas, squamous cell lung tumors and seminomas (PubMed:9155056)

TOP2A / Topoisomerase II Alpha Antibody (clone Ki-S1) - Protocols

Provided below are standard protocols that you may find useful for product applications.

- [Western Blot](#)
- [Blocking Peptides](#)
- [Dot Blot](#)
- [Immunohistochemistry](#)
- [Immunofluorescence](#)
- [Immunoprecipitation](#)
- [Flow Cytometry](#)
- [Cell Culture](#)

TOP2A / Topoisomerase II Alpha Antibody (clone Ki-S1) - Images



Anti-TOP2A antibody IHC of human small intestine.

TOP2A / Topoisomerase II Alpha Antibody (clone Ki-S1) - Background

Control of topological states of DNA by transient breakage and subsequent rejoining of DNA strands. Topoisomerase II makes double-strand breaks. Essential during mitosis and meiosis for proper segregation of daughter chromosomes. May play a role in regulating the period length of ARNTL/BMAL1 transcriptional oscillation (By similarity).

TOP2A / Topoisomerase II Alpha Antibody (clone Ki-S1) - References

Tsai-Pflugfelder M., et al. Proc. Natl. Acad. Sci. U.S.A. 85:7177-7181(1988).
Wasserman R.A., et al. Cancer Res. 53:3591-3596(1993).
Lang A.J., et al. Gene 221:255-266(1998).
Sng J.H., et al. Biochim. Biophys. Acta 1444:395-406(1999).
Zody M.C., et al. Nature 440:1045-1049(2006).