

**LBR / Lamin B Receptor Antibody (aa178-190)**  
**Goat Polyclonal Antibody**  
**Catalog # ALS13853**

**Specification**

---

**LBR / Lamin B Receptor Antibody (aa178-190) - Product Information**

Application	IHC
Primary Accession	<a href="#">Q14739</a>
Reactivity	Human
Host	Goat
Clonality	Polyclonal
Calculated MW	71kDa KDa

**LBR / Lamin B Receptor Antibody (aa178-190) - Additional Information**

**Gene ID** 3930

**Other Names**

Lamin-B receptor, Integral nuclear envelope inner membrane protein, LMN2R, LBR

**Target/Specificity**

Human LBR.

**Reconstitution & Storage**

Store at -20°C. Minimize freezing and thawing.

**Precautions**

LBR / Lamin B Receptor Antibody (aa178-190) is for research use only and not for use in diagnostic or therapeutic procedures.

**LBR / Lamin B Receptor Antibody (aa178-190) - Protein Information**

**Name** LBR

**Function**

Catalyzes the reduction of the C14-unsaturated bond of lanosterol, as part of the metabolic pathway leading to cholesterol biosynthesis (PubMed: [12618959](http://www.uniprot.org/citations/12618959), PubMed: [16784888](http://www.uniprot.org/citations/16784888), PubMed: [21327084](http://www.uniprot.org/citations/21327084), PubMed: [27336722](http://www.uniprot.org/citations/27336722), PubMed: [9630650](http://www.uniprot.org/citations/9630650)). Plays a critical role in myeloid cell cholesterol biosynthesis which is essential to both myeloid cell growth and functional maturation (By similarity). Mediates the activation of NADPH oxidases, perhaps by maintaining critical levels of cholesterol required for membrane lipid raft formation during neutrophil differentiation (By similarity). Anchors the lamina and the heterochromatin to the inner nuclear membrane (PubMed: [10828963](http://www.uniprot.org/citations/10828963)).

**Cellular Location**

Nucleus inner membrane; Multi-pass membrane protein. Endoplasmic reticulum membrane. Cytoplasm Nucleus. Note=Nucleus; nuclear rim

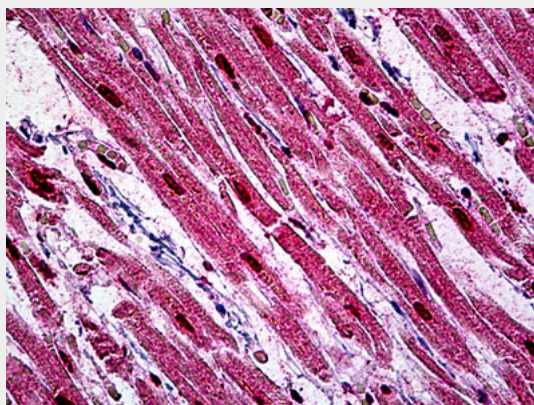
**Tissue Location**

Expressed in the bone marrow, liver, heart, adrenal gland, lung, placenta and uterus (PubMed:16784888). Expressed in osteoclasts and osteoblast-like cells (PubMed:21327084)

**LBR / Lamin B Receptor Antibody (aa178-190) - Protocols**

Provided below are standard protocols that you may find useful for product applications.

- [Western Blot](#)
- [Blocking Peptides](#)
- [Dot Blot](#)
- [Immunohistochemistry](#)
- [Immunofluorescence](#)
- [Immunoprecipitation](#)
- [Flow Cytometry](#)
- [Cell Culture](#)

**LBR / Lamin B Receptor Antibody (aa178-190) - Images**

Anti-LBR antibody IHC of human heart.

**LBR / Lamin B Receptor Antibody (aa178-190) - Background**

Anchors the lamina and the heterochromatin to the inner nuclear membrane.

**LBR / Lamin B Receptor Antibody (aa178-190) - References**

- Ye Q., et al. J. Biol. Chem. 269:11306-11311(1994).  
Schuler E., et al. J. Biol. Chem. 269:11312-11317(1994).  
Ota T., et al. Nat. Genet. 36:40-45(2004).  
Totoki Y., et al. Submitted (MAR-2005) to the EMBL/GenBank/DDBJ databases.  
Suzuki Y., et al. Submitted (APR-2005) to the EMBL/GenBank/DDBJ databases.