

PARL / PSARL Antibody (N-Terminus)
Rabbit Polyclonal Antibody
Catalog # ALS13829**Specification**

PARL / PSARL Antibody (N-Terminus) - Product Information

Application	ICC, IF, IHC
Primary Accession	O9H300
Reactivity	Human, Mouse, Rat
Host	Rabbit
Clonality	Polyclonal
Calculated MW	42kDa KDa

PARL / PSARL Antibody (N-Terminus) - Additional Information**Gene ID** 55486**Other Names**

Presenilins-associated rhomboid-like protein, mitochondrial, 3.4.21.105, Mitochondrial intramembrane cleaving protease PARL, P-beta, Pbeta, PARL, PSARL

Reconstitution & Storage

Short term 4°C, long term aliquot and store at -20°C, avoid freeze thaw cycles. Store undiluted.

Precautions

PARL / PSARL Antibody (N-Terminus) is for research use only and not for use in diagnostic or therapeutic procedures.

PARL / PSARL Antibody (N-Terminus) - Protein Information**Name** PARL**Synonyms** PSARL**Function**

Required for the control of apoptosis during postnatal growth. Essential for proteolytic processing of an antiapoptotic form of OPA1 which prevents the release of mitochondrial cytochrome c in response to intrinsic apoptotic signals (By similarity). Required for the maturation of PINK1 into its 52kDa mature form after its cleavage by mitochondrial-processing peptidase (MPP) (PubMed:22354088). Promotes cleavage of serine/threonine-protein phosphatase PGAM5 in damaged mitochondria in response to loss of mitochondrial membrane potential (PubMed:22915595). Mediates differential cleavage of PINK1 and PGAM5 depending on the health status of mitochondria, disassociating from PINK1 and associating with PGAM5 in response to mitochondrial membrane potential loss (PubMed:22915595). Required for processing of CLPB into a form with higher protein disaggregase activity by removing an autoinhibitory N-terminal peptide (PubMed:28288130, PubMed:32573439). Promotes processing of DIABLO/SMAC in the mitochondrion which is required for DIABLO apoptotic activity (PubMed:28288130). Also required for cleavage of STARD7 and TTC19 (PubMed:28288130). Promotes changes in mitochondria morphology regulated by phosphorylation of P-beta domain (PubMed:14732705, PubMed:17116872).

Cellular Location

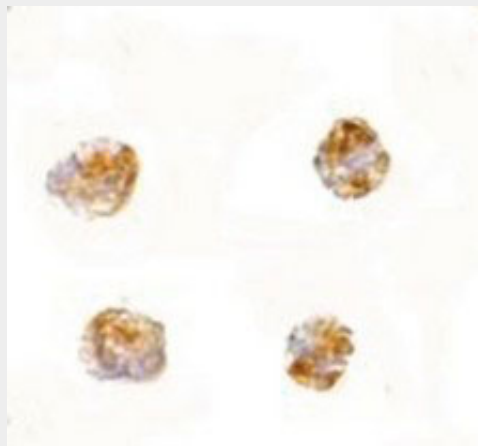
Mitochondrion inner membrane; Multi-pass membrane protein

PARL / PSARL Antibody (N-Terminus) - Protocols

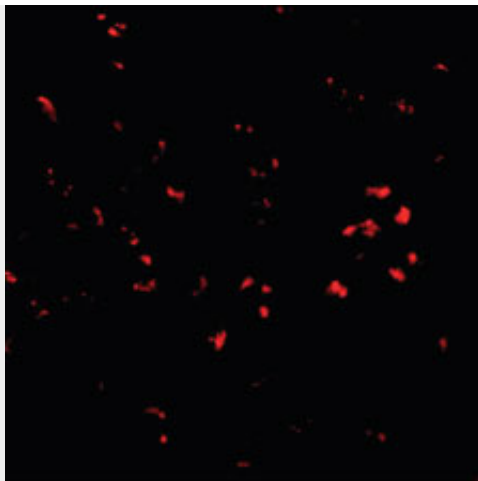
Provided below are standard protocols that you may find useful for product applications.

- [Western Blot](#)
- [Blocking Peptides](#)
- [Dot Blot](#)
- [Immunohistochemistry](#)
- [Immunofluorescence](#)
- [Immunoprecipitation](#)
- [Flow Cytometry](#)
- [Cell Culture](#)

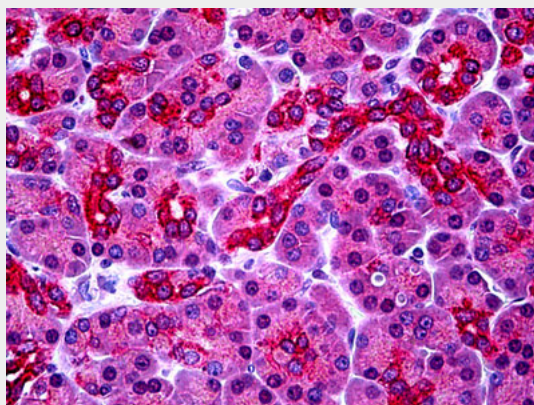
PARL / PSARL Antibody (N-Terminus) - Images



Immunocytochemistry of PARL in 3T3 cells with PARL antibody at 2.5 ug/ml.



Immunofluorescence of PARL in 3T3 cells with PARL antibody at 2.50 ug/ml.



Anti-PARL antibody IHC of human pancreas.

PARL / PSARL Antibody (N-Terminus) - Background

Required for the control of apoptosis during postnatal growth. Essential for proteolytic processing of an antiapoptotic form of OPA1 which prevents the release of mitochondrial cytochrome c in response to intrinsic apoptotic signals (By similarity). Promotes changes in mitochondria morphology regulated by phosphorylation of P-beta domain.

PARL / PSARL Antibody (N-Terminus) - References

- Pellegrini L.,et al.J. Alzheimers Dis. 3:181-190(2001).
- Zhang C.,et al.Submitted (DEC-1998) to the EMBL/GenBank/DDBJ databases.
- Sik A.,et al.J. Biol. Chem. 279:15323-15329(2004).
- Jeyaraju D.V.,et al.Proc. Natl. Acad. Sci. U.S.A. 103:18562-18567(2006).