

SYNGR1 / Synaptogyrin 1 Antibody (Internal)
Rabbit Polyclonal Antibody
Catalog # ALS13805**Specification**

SYNGR1 / Synaptogyrin 1 Antibody (Internal) - Product Information

Application	IF, WB, IHC
Primary Accession	O43759
Reactivity	Human, Mouse, Rat
Host	Rabbit
Clonality	Polyclonal
Calculated MW	25kDa KDa

SYNGR1 / Synaptogyrin 1 Antibody (Internal) - Additional Information**Gene ID** 9145**Other Names**

Synaptogyrin-1, SYNGR1

Target/Specificity

Human SYNGR1

Reconstitution & Storage

Short term 4°C, long term aliquot and store at -20°C, avoid freeze thaw cycles. Store undiluted.

Precautions

SYNGR1 / Synaptogyrin 1 Antibody (Internal) is for research use only and not for use in diagnostic or therapeutic procedures.

SYNGR1 / Synaptogyrin 1 Antibody (Internal) - Protein Information**Name** SYNGR1 ([HGNC:11498](#))**Function**

May play a role in regulated exocytosis. Modulates the localization of synaptophysin/SYP into synaptic-like microvesicles and may therefore play a role in synaptic-like microvesicle formation and/or maturation (By similarity). Involved in the regulation of short- term and long-term synaptic plasticity (By similarity).

Cellular Location

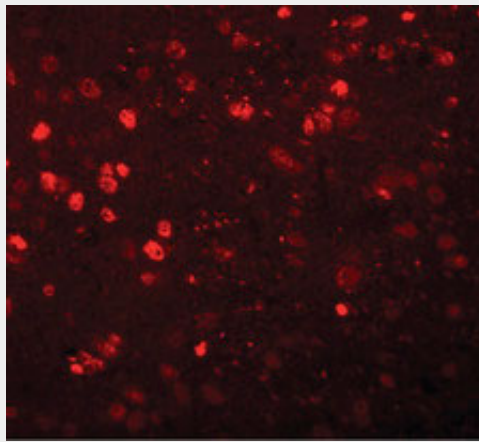
Cytoplasmic vesicle, secretory vesicle, synaptic vesicle membrane {ECO:0000250|UniProtKB:Q62876}; Multi-pass membrane protein {ECO:0000250|UniProtKB:Q62876}. Melanosome. Note=Identified by mass spectrometry in melanosome fractions from stage I to stage IV

SYNGR1 / Synaptogyrin 1 Antibody (Internal) - Protocols

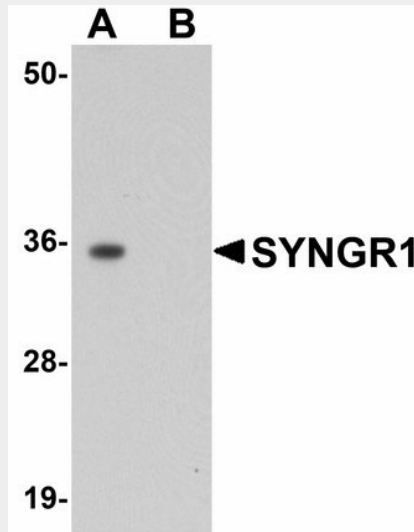
Provided below are standard protocols that you may find useful for product applications.

- [Western Blot](#)
- [Blocking Peptides](#)
- [Dot Blot](#)
- [Immunohistochemistry](#)
- [Immunofluorescence](#)
- [Immunoprecipitation](#)
- [Flow Cytometry](#)
- [Cell Culture](#)

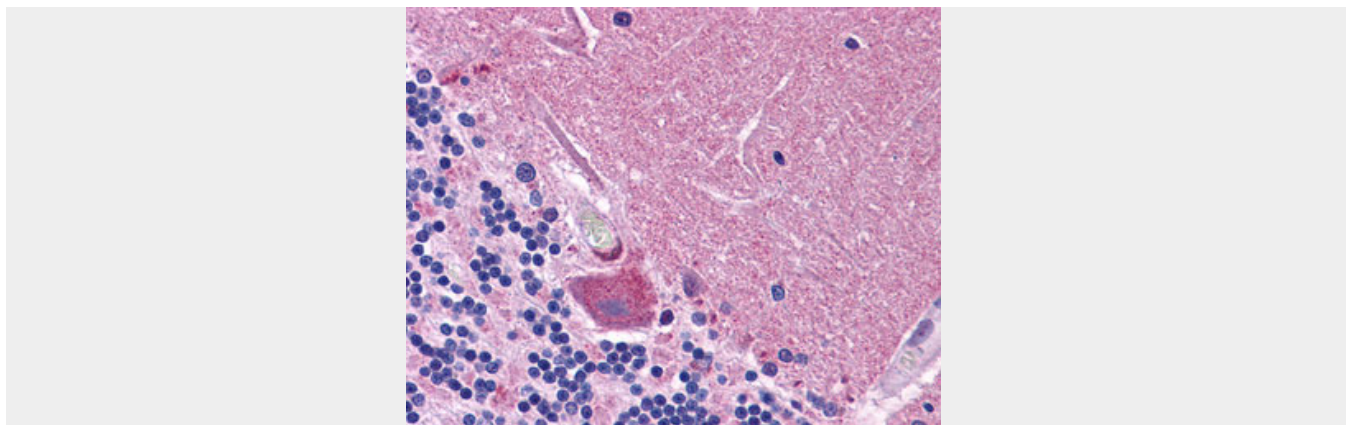
SYNGR1 / Synaptogyrin 1 Antibody (Internal) - Images



Immunofluorescence of SYNGR1 in rat brain tissue with SYNGR1 antibody at 20 ug/ml.



Western blot of SYNGR1 in rat brain tissue lysate with SYNGR1 antibody at 1 ug/ml in (A) the...



Anti-SYNGR1 / Synaptogyrin 1 antibody IHC of human brain, cerebellum.

SYNGR1 / Synaptogyrin 1 Antibody (Internal) - Background

Involved in the regulation of short-term and long-term synaptic plasticity.

SYNGR1 / Synaptogyrin 1 Antibody (Internal) - References

- Kedra D., et al. Hum. Genet. 103:131-141(1998).
Collins J.E., et al. Genome Biol. 5:R84.1-R84.11(2004).
Kalnine N., et al. Submitted (MAY-2003) to the EMBL/GenBank/DDBJ databases.
Ota T., et al. Nat. Genet. 36:40-45(2004).
Dunham I., et al. Nature 402:489-495(1999).