

E6TP1 / SIPA1L1 Antibody (N-Terminus)
Rabbit Polyclonal Antibody
Catalog # ALS13789

Specification

E6TP1 / SIPA1L1 Antibody (N-Terminus) - Product Information

Application	IF
Primary Accession	O43166
Reactivity	Human, Mouse, Rat
Host	Rabbit
Clonality	Polyclonal
Calculated MW	200kDa KDa

E6TP1 / SIPA1L1 Antibody (N-Terminus) - Additional Information

Gene ID 26037

Other Names

Signal-induced proliferation-associated 1-like protein 1, SIPA1-like protein 1, High-risk human papilloma viruses E6 oncoproteins targeted protein 1, E6-targeted protein 1, SIPA1L1, E6TP1, KIAA0440

Target/Specificity

Human SIPA1L1

Reconstitution & Storage

Short term 4°C, long term aliquot and store at -20°C, avoid freeze thaw cycles. Store undiluted.

Precautions

E6TP1 / SIPA1L1 Antibody (N-Terminus) is for research use only and not for use in diagnostic or therapeutic procedures.

E6TP1 / SIPA1L1 Antibody (N-Terminus) - Protein Information

Name SIPA1L1

Synonyms E6TP1, KIAA0440

Function

Stimulates the GTPase activity of RAP2A. Promotes reorganization of the actin cytoskeleton and recruits DLG4 to F-actin. Contributes to the regulation of dendritic spine morphogenesis (By similarity).

Cellular Location

Cytoplasm, cytoskeleton. Postsynaptic density. Synapse, synaptosome Note=Associated with the actin cytoskeleton. Detected at synapses and dendritic spines of cultured hippocampal neurons (By similarity)

Tissue Location

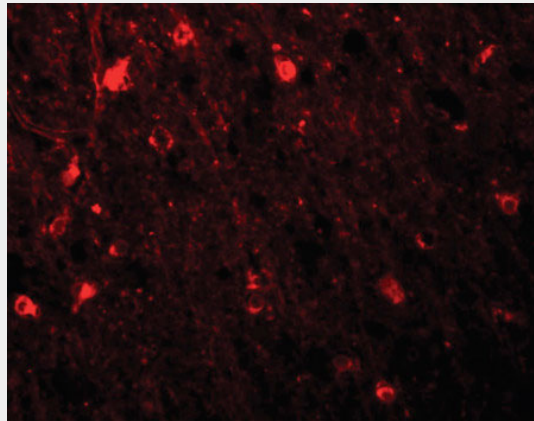
Widely expressed..

E6TP1 / SIPA1L1 Antibody (N-Terminus) - Protocols

Provided below are standard protocols that you may find useful for product applications.

- [Western Blot](#)
- [Blocking Peptides](#)
- [Dot Blot](#)
- [Immunohistochemistry](#)
- [Immunofluorescence](#)
- [Immunoprecipitation](#)
- [Flow Cytometry](#)
- [Cell Culture](#)

E6TP1 / SIPA1L1 Antibody (N-Terminus) - Images



Immunofluorescence of SIPA1L1 in human brain tissue with SIPA1L1 antibody at 20 ug/ml.

E6TP1 / SIPA1L1 Antibody (N-Terminus) - Background

Stimulates the GTPase activity of RAP2A. Promotes reorganization of the actin cytoskeleton and recruits DLG4 to F- actin. Contributes to the regulation of dendritic spine morphogenesis (By similarity).

E6TP1 / SIPA1L1 Antibody (N-Terminus) - References

Gao Q.,et al.Mol. Cell. Biol. 19:733-744(1999).
Ishikawa K.,et al.DNA Res. 4:307-313(1997).
Nakajima D.,et al.DNA Res. 9:99-106(2002).
Ota T.,et al.Nat. Genet. 36:40-45(2004).
Heilig R.,et al.Nature 421:601-607(2003).