

MTCH2 Antibody (N-Terminus)
Rabbit Polyclonal Antibody
Catalog # ALS13737**Specification**

MTCH2 Antibody (N-Terminus) - Product Information

Application	IF, WB, IHC
Primary Accession	O9Y6C9
Reactivity	Human, Mouse
Host	Rabbit
Clonality	Polyclonal
Calculated MW	33kDa KDa

MTCH2 Antibody (N-Terminus) - Additional Information**Gene ID** 23788**Other Names**

Mitochondrial carrier homolog 2, Met-induced mitochondrial protein, MTCH2, MIMP

Target/Specificity

Human MTCH2

Reconstitution & Storage

Short term 4°C, long term aliquot and store at -20°C, avoid freeze thaw cycles. Store undiluted.

Precautions

MTCH2 Antibody (N-Terminus) is for research use only and not for use in diagnostic or therapeutic procedures.

MTCH2 Antibody (N-Terminus) - Protein Information**Name** MTCH2 {ECO:0000303|PubMed:36264797, ECO:0000312|HGNC:HGNC:17587}**Function**

Protein insertase that mediates insertion of transmembrane proteins into the mitochondrial outer membrane (PubMed:36264797). Catalyzes insertion of proteins with alpha-helical transmembrane regions, such as signal-anchored, tail-anchored and multi-pass membrane proteins (PubMed:36264797). Does not mediate insertion of beta-barrel transmembrane proteins (PubMed:36264797). Also acts as a receptor for the truncated form of pro-apoptotic BH3-interacting domain death agonist (p15 BID) and has therefore a critical function in apoptosis (By similarity). Regulates the quiescence/cycling of hematopoietic stem cells (HSCs) (By similarity). Acts as a regulator of mitochondrial fusion, essential for the naive-to-primed interconversion of embryonic stem cells (ESCs) (By similarity). Acts as a regulator of lipid homeostasis and has a regulatory role in adipocyte differentiation and biology (By similarity).

Cellular Location

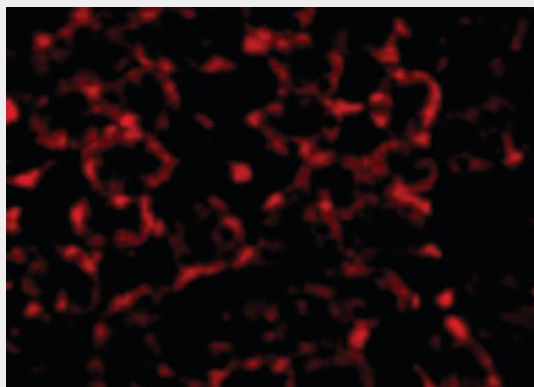
Mitochondrion outer membrane; Multi-pass membrane protein

MTCH2 Antibody (N-Terminus) - Protocols

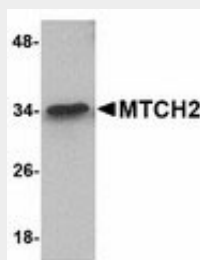
Provided below are standard protocols that you may find useful for product applications.

- [Western Blot](#)
- [Blocking Peptides](#)
- [Dot Blot](#)
- [Immunohistochemistry](#)
- [Immunofluorescence](#)
- [Immunoprecipitation](#)
- [Flow Cytometry](#)
- [Cell Culture](#)

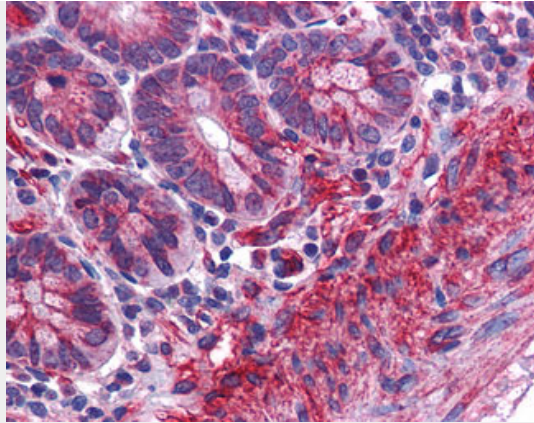
MTCH2 Antibody (N-Terminus) - Images



Immunofluorescence of MTCH2 in Mouse Kidney cells with MTCH2 antibody at 20 ug/ml.



Western blot of MTCH2 in 293 cell lysate with MTCH2 antibody at 1 ug/ml.



Anti-MTCH2 antibody IHC of human small intestine.

MTCH2 Antibody (N-Terminus) - Background

The substrate transported is not yet known. Induces mitochondrial depolarization.

MTCH2 Antibody (N-Terminus) - References

- Yerushalmi G.M.,et al.Neoplasia 4:510-522(2002).
Jang J.S.,et al.Submitted (AUG-1999) to the EMBL/GenBank/DDBJ databases.
Zhang Q.-H.,et al.Genome Res. 10:1546-1560(2000).
Ota T.,et al.Nat. Genet. 36:40-45(2004).
Mural R.J.,et al.Submitted (SEP-2005) to the EMBL/GenBank/DDBJ databases.