

HINT / HINT1 Antibody (Internal)
Rabbit Polyclonal Antibody
Catalog # ALS13733**Specification**

HINT / HINT1 Antibody (Internal) - Product Information

Application	ICC, WB, IHC
Primary Accession	P49773
Reactivity	Human, Mouse, Rat
Host	Rabbit
Clonality	Polyclonal
Calculated MW	14kDa KDa

HINT / HINT1 Antibody (Internal) - Additional Information**Gene ID** 3094**Other Names**

Histidine triad nucleotide-binding protein 1, 3.-.-., Adenosine 5'-monophosphoramidase, Protein kinase C inhibitor 1, Protein kinase C-interacting protein 1, PKCI-1, HINT1, HINT, PKCI1, PRKCNH1

Reconstitution & Storage

Short term 4°C, long term aliquot and store at -20°C, avoid freeze thaw cycles. Store undiluted.

Precautions

HINT / HINT1 Antibody (Internal) is for research use only and not for use in diagnostic or therapeutic procedures.

HINT / HINT1 Antibody (Internal) - Protein Information**Name** HINT1**Synonyms** HINT, PKCI1, PRKCNH1**Function**Exhibits adenosine 5'-monophosphoramidase activity, hydrolyzing purine nucleotide phosphoramidates with a single phosphate group such as adenosine 5'monophosphoramidate (AMP-NH₂) to yield AMP and NH₂ (PubMed: [15703176](http://www.uniprot.org/citations/15703176) target="_blank">15703176, PubMed: [16835243](http://www.uniprot.org/citations/16835243) target="_blank">16835243, PubMed: [17217311](http://www.uniprot.org/citations/17217311) target="_blank">17217311, PubMed: [17337452](http://www.uniprot.org/citations/17337452) target="_blank">17337452, PubMed: [22329685](http://www.uniprot.org/citations/22329685) target="_blank">22329685, PubMed: [23614568](http://www.uniprot.org/citations/23614568) target="_blank">23614568, PubMed: [28691797](http://www.uniprot.org/citations/28691797) target="_blank">28691797, PubMed: [29787766](http://www.uniprot.org/citations/29787766) target="_blank">29787766, PubMed: [31990367](http://www.uniprot.org/citations/31990367) target="_blank">31990367). Hydrolyzes adenosine 5'monophosphomorpholidate (AMP-morpholidate) and guanosine 5'monophosphomorpholidate (GMP-morpholidate) (PubMed:15703176, PubMed:16835243). Hydrolyzes lysyl-AMP (AMP-N-epsilon-(N-alpha-acetyl lysine methyl ester)) generated by lysine tRNA ligase, as well as Met-AMP, His-AMP and Asp-AMP, lysyl-GMP (GMP-N-epsilon-(N-alpha-acetyl lysine methyl ester)) and AMP-N-alanine methyl ester (PubMed:15703176, PubMed:17337452, PubMed:22329685). Hydrolyzes 3-indolepropionic acyl-adenylate, tryptamine adenosine phosphoramidate monoester and other fluorogenic purine nucleoside tryptamine phosphoramidates in vitro (PubMed:17217311, PubMed:17337452, PubMed:23614568, PubMed:28691797, PubMed:29787766, PubMed:31990367). Can also convert adenosine 5'-O-phosphorothioate and guanosine 5'-O-phosphorothioate to the corresponding nucleoside 5'-O-phosphates with concomitant release of hydrogen sulfide (PubMed:30772266). In addition, functions as scaffolding protein that modulates transcriptional activation by the LEF1/TCF1-CTNNB1 complex and by the complex formed with MITF and CTNNB1 (PubMed:16014379, PubMed:22647378). Modulates p53/TP53 levels and p53/TP53-mediated apoptosis (PubMed:16835243). Modulates proteasomal degradation of target proteins by the SCF (SKP2-CUL1-F-box protein) E3 ubiquitin-protein ligase complex (PubMed:19112177). Also exhibits SUMO-specific isopeptidase activity, deconjugating SUMO1 from RGS17 (PubMed:31088288). Deconjugates SUMO1 from RANGAP1 (By similarity).

Cellular Location

Cytoplasm. Nucleus. Note=Interaction with CDK7 leads to a more nuclear localization.

Tissue Location

Widely expressed.

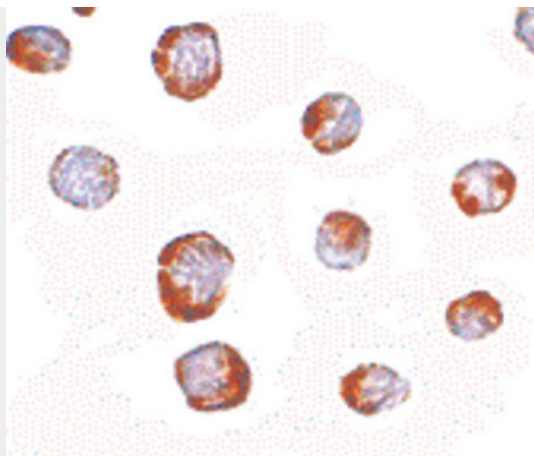
HINT / HINT1 Antibody (Internal) - Protocols

Provided below are standard protocols that you may find useful for product applications.

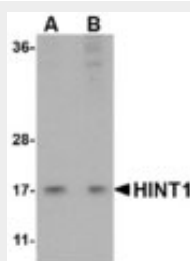
- [Western Blot](#)
- [Blocking Peptides](#)
- [Dot Blot](#)
- [Immunohistochemistry](#)
- [Immunofluorescence](#)
- [Immunoprecipitation](#)
- [Flow Cytometry](#)
- [Cell Culture](#)

HINT / HINT1 Antibody (Internal) - Images

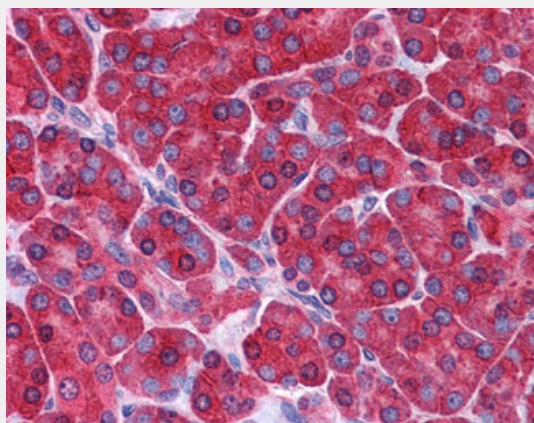




Immunocytochemistry of HINT1 in Jurkat cells with HINT1 antibody at 2.5 ug/ml.



Western blot of HINT1 in Jurkat lysate with HINT1 antibody at (A) 1 and (B) 2 ug/ml.



Anti-HINT1 antibody IHC of human pancreas.

HINT / HINT1 Antibody (Internal) - Background

Hydrolyzes purine nucleotide phosphoramidates with a single phosphate group, including adenosine 5'monophosphoramidate (AMP-NH₂), adenosine 5'monophosphomorpholidate (AMP-morpholidate) and guanosine 5'monophosphomorpholidate (GMP-morpholidate). Hydrolyzes lysyl-AMP (AMP-N-epsilon-(N-alpha-acetyl lysine methyl ester)) generated by lysine tRNA ligase, as well as Met-AMP, His- AMP and Asp-AMP, lysyl-GMP (GMP-N-epsilon-(N-alpha-acetyl lysine methyl ester)) and AMP-N-alanine methyl ester. Can also convert adenosine 5'-O-phosphorothioate and guanosine 5'-O-phosphorothioate to the corresponding nucleoside 5'-O-phosphates with concomitant release of hydrogen sulfide. In addition, functions as scaffolding protein that modulates transcriptional activation by the LEF1/TCF1-CTNNB1 complex and by the complex formed with MITF and CTNNB1. Modulates p53/TP53 levels and p53/TP53-mediated apoptosis. Modulates proteasomal degradation of target proteins by the SCF (SKP2-CUL1-F-box protein) E3 ubiquitin-protein ligase complex.

HINT / HINT1 Antibody (Internal) - References

Brzoska P.M.,et al.Genomics 36:151-156(1996).

Brzoska P.M.,et al.Proc. Natl. Acad. Sci. U.S.A. 92:7824-7828(1995).

Ota T.,et al.Nat. Genet. 36:40-45(2004).

Ebert L.,et al.Submitted (JUN-2004) to the EMBL/GenBank/DDBJ databases.

Lima C.D.,et al.Proc. Natl. Acad. Sci. U.S.A. 93:5357-5362(1996).