

LGI2 Antibody (Internal)
Rabbit Polyclonal Antibody
Catalog # ALS13721

Specification

LGI2 Antibody (Internal) - Product Information

Application	IF, IHC
Primary Accession	O8NOV4
Reactivity	Human, Mouse
Host	Rabbit
Clonality	Polyclonal
Calculated MW	62kDa KDa

LGI2 Antibody (Internal) - Additional Information

Gene ID 55203

Other Names

Leucine-rich repeat LGI family member 2, LGI1-like protein 2, Leucine-rich glioma-inactivated protein 2, LGI2, KIAA1916, LGIL2

Reconstitution & Storage

Short term 4°C, long term aliquot and store at -20°C, avoid freeze thaw cycles. Store undiluted.

Precautions

LGI2 Antibody (Internal) is for research use only and not for use in diagnostic or therapeutic procedures.

LGI2 Antibody (Internal) - Protein Information

Name LGI2

Synonyms KIAA1916, LGIL2

Function

Required for the development of soma-targeting inhibitory GABAergic synapses made by parvalbumin-positive basket cells.

Cellular Location

Secreted.

Tissue Location

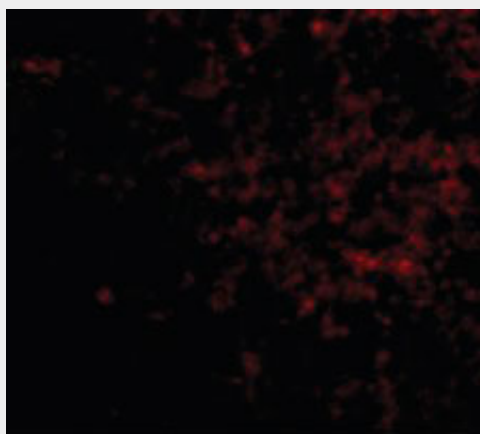
Brain, heart and placenta.

LGI2 Antibody (Internal) - Protocols

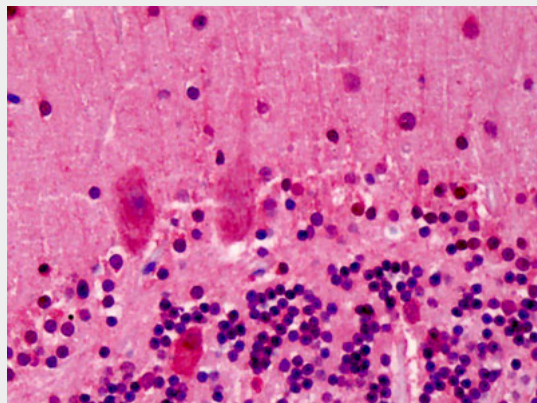
Provided below are standard protocols that you may find useful for product applications.

- [Western Blot](#)
- [Blocking Peptides](#)
- [Dot Blot](#)
- [Immunohistochemistry](#)
- [Immunofluorescence](#)
- [Immunoprecipitation](#)
- [Flow Cytometry](#)
- [Cell Culture](#)

LG12 Antibody (Internal) - Images



Immunofluorescence of LG12 in Human Brain cells with LG12 antibody at 5 ug/ml.



Anti-LG12 antibody IHC of human brain, cerebellum.

LG12 Antibody (Internal) - References

Gu W., et al. FEBS Lett. 519:71-76(2002).
Scheel H., et al. Hum. Mol. Genet. 11:1757-1762(2002).
Staub E., et al. Trends Biochem. Sci. 27:441-444(2002).
Nagase T., et al. DNA Res. 8:179-187(2001).
Ota T., et al. Nat. Genet. 36:40-45(2004).