

RPL22 / L22 Antibody (C-Terminus)
Goat Polyclonal Antibody
Catalog # ALS13705

Specification

RPL22 / L22 Antibody (C-Terminus) - Product Information

Application	IHC
Primary Accession	P35268
Reactivity	Human, Mouse, Rat, Rabbit, Monkey, Pig, Chicken, Horse, Xenopus, Bovine, Dog
Host	Goat
Clonality	Polyclonal
Calculated MW	15kDa KDa

RPL22 / L22 Antibody (C-Terminus) - Additional Information

Gene ID 6146

Other Names

60S ribosomal protein L22, EBER-associated protein, EAP, Epstein-Barr virus small RNA-associated protein, Heparin-binding protein HBp15, RPL22

Target/Specificity

Human RPL22.

Reconstitution & Storage

Store at -20°C. Minimize freezing and thawing.

Precautions

RPL22 / L22 Antibody (C-Terminus) is for research use only and not for use in diagnostic or therapeutic procedures.

RPL22 / L22 Antibody (C-Terminus) - Protein Information

Name RPL22

Function

Component of the large ribosomal subunit (PubMed: [23636399](http://www.uniprot.org/citations/23636399), PubMed: [32669547](http://www.uniprot.org/citations/32669547)). The ribosome is a large ribonucleoprotein complex responsible for the synthesis of proteins in the cell (PubMed: [23636399](http://www.uniprot.org/citations/23636399), PubMed: [32669547](http://www.uniprot.org/citations/32669547)).

Cellular Location

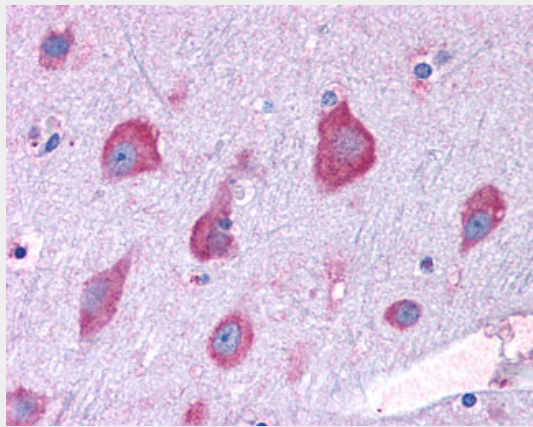
Cytoplasm.

RPL22 / L22 Antibody (C-Terminus) - Protocols

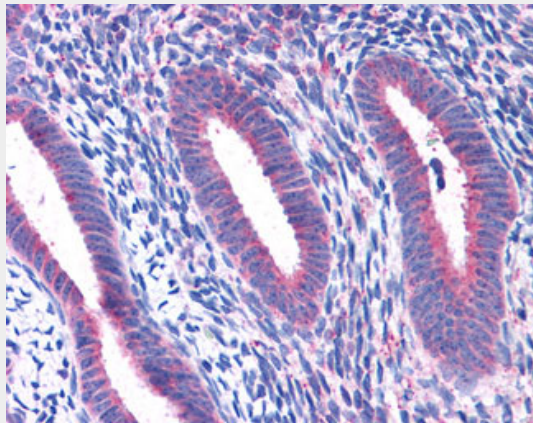
Provided below are standard protocols that you may find useful for product applications.

- [Western Blot](#)
- [Blocking Peptides](#)
- [Dot Blot](#)
- [Immunohistochemistry](#)
- [Immunofluorescence](#)
- [Immunoprecipitation](#)
- [Flow Cytometry](#)
- [Cell Culture](#)

RPL22 / L22 Antibody (C-Terminus) - Images



Anti-RPL22 antibody IHC of human brain, cortex.



Anti-RPL22 antibody IHC of human uterus.

RPL22 / L22 Antibody (C-Terminus) - References

- Toczyski D.P.W., et al. EMBO J. 10:459-466(1991).
Fujita Y., et al. Biochem. Biophys. Res. Commun. 199:706-713(1994).
Ota T., et al. Nat. Genet. 36:40-45(2004).
Ebert L., et al. Submitted (JUN-2004) to the EMBL/GenBank/DDBJ databases.
Bienvenut W.V., et al. Submitted (FEB-2008) to UniProtKB.