

FH / Fumarase / MCL Antibody (Internal)
Goat Polyclonal Antibody
Catalog # ALS13701**Specification**

FH / Fumarase / MCL Antibody (Internal) - Product Information

Application	WB, IHC
Primary Accession	P07954
Reactivity	Human, Mouse, Rat, Zebrafish, Hamster, Monkey, Pig, Chicken, Sheep, Horse, Xenopus, Bovine, Dog, Drosophila
Host	Goat
Clonality	Polyclonal
Calculated MW	55kDa KDa

FH / Fumarase / MCL Antibody (Internal) - Additional Information**Gene ID** 2271**Other Names**

Fumarate hydratase, mitochondrial, Fumarase, 4.2.1.2, FH

Target/Specificity

Human FH / Fumarate hydratase.

Reconstitution & Storage

Store at -20°C. Minimize freezing and thawing.

Precautions

FH / Fumarase / MCL Antibody (Internal) is for research use only and not for use in diagnostic or therapeutic procedures.

FH / Fumarase / MCL Antibody (Internal) - Protein Information**Name** FH {ECO:0000303|PubMed:27037871, ECO:0000312|HGNC:HGNC:3700}**Function**

Catalyzes the reversible stereospecific interconversion of fumarate to L-malate (PubMed:30761759). Experiments in other species have demonstrated that specific isoforms of this protein act in defined pathways and favor one direction over the other (Probable).

Cellular Location

[Isoform Mitochondrial]: Mitochondrion

Tissue Location

Expressed in red blood cells; underexpressed in red blood cells (cytoplasm) of patients with hereditary non-spherocytic hemolytic anemia of unknown etiology.

FH / Fumarase / MCL Antibody (Internal) - Protocols

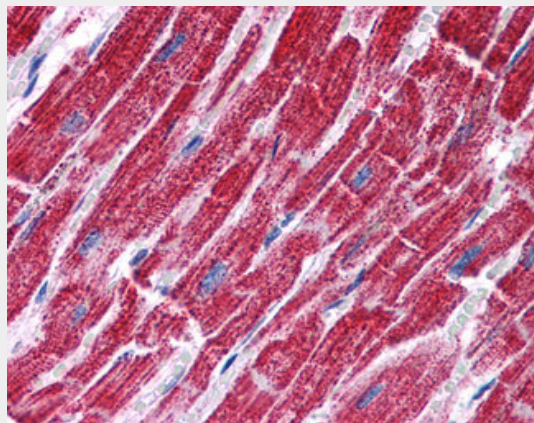
Provided below are standard protocols that you may find useful for product applications.

- [Western Blot](#)
- [Blocking Peptides](#)
- [Dot Blot](#)
- [Immunohistochemistry](#)
- [Immunofluorescence](#)
- [Immunoprecipitation](#)
- [Flow Cytometry](#)
- [Cell Culture](#)

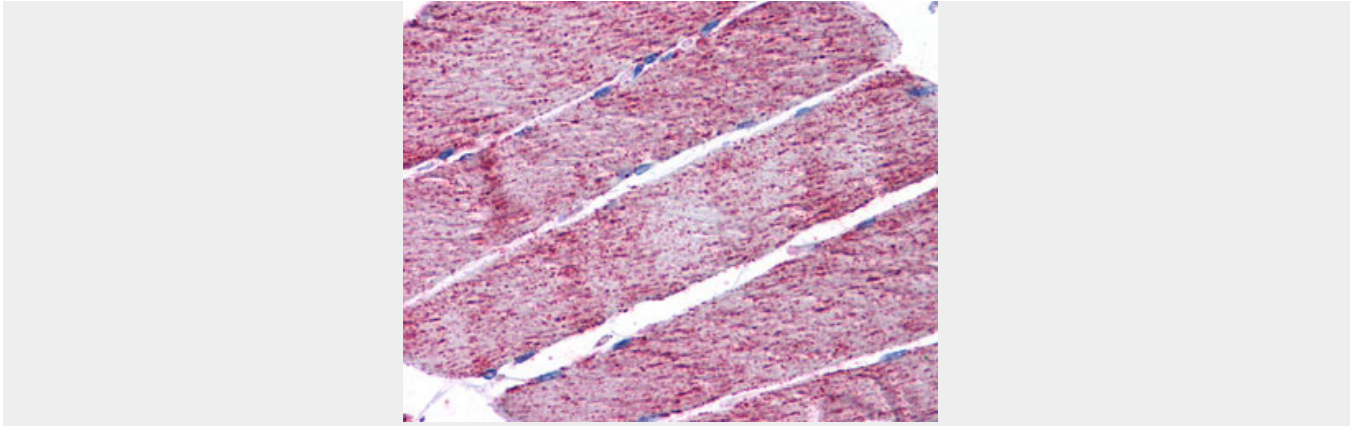
FH / Fumarase / MCL Antibody (Internal) - Images



Antibody (0.01 ug/ml) staining of Human Kidney lysate (35 ug protein in RIPA buffer).



Anti-FH / Fumarase antibody IHC of human heart.



Anti-FH / Fumarase antibody IHC of human skeletal muscle.

FH / Fumarase / MCL Antibody (Internal) - Background

Also acts as a tumor suppressor.

FH / Fumarase / MCL Antibody (Internal) - References

Gellera C.,et al.Submitted (MAY-1996) to the EMBL/GenBank/DDBJ databases.
Bourgeron T.,et al.Submitted (FEB-1996) to the EMBL/GenBank/DDBJ databases.
Kalnine N.,et al.Submitted (AUG-2003) to the EMBL/GenBank/DDBJ databases.
Ota T.,et al.Nat. Genet. 36:40-45(2004).
Mural R.J.,et al.Submitted (JUL-2005) to the EMBL/GenBank/DDBJ databases.