

ARL6IP5 Antibody (C-Terminus)
Goat Polyclonal Antibody
Catalog # ALS13692

Specification

ARL6IP5 Antibody (C-Terminus) - Product Information

Application	IHC
Primary Accession	O75915
Reactivity	Human, Monkey
Host	Goat
Clonality	Polyclonal
Calculated MW	22kDa KDa

ARL6IP5 Antibody (C-Terminus) - Additional Information

Gene ID 10550

Other Names

PRA1 family protein 3, ADP-ribosylation factor-like protein 6-interacting protein 5, ARL-6-interacting protein 5, Aip-5, Cytoskeleton-related vitamin A-responsive protein, Dermal papilla-derived protein 11, GTRAP3-18, Glutamate transporter EAAC1-interacting protein, JM5, Prenylated Rab acceptor protein 2, Protein JWA, Putative MAPK-activating protein PM27, ARL6IP5, DERP11, JWA, PRA2, PRAF3

Target/Specificity

Human ARL6IP5 / JWA.

Reconstitution & Storage

Store at -20°C. Minimize freezing and thawing.

Precautions

ARL6IP5 Antibody (C-Terminus) is for research use only and not for use in diagnostic or therapeutic procedures.

ARL6IP5 Antibody (C-Terminus) - Protein Information

Name ARL6IP5

Synonyms DERP11, JWA, PRA2, PRAF3

Function

Regulates intracellular concentrations of taurine and glutamate. Negatively modulates SLC1A1/EAAC1 glutamate transport activity by decreasing its affinity for glutamate in a PKC activity- dependent manner. Plays a role in the retention of SLC1A1/EAAC1 in the endoplasmic reticulum.

Cellular Location

Endoplasmic reticulum membrane {ECO:0000250|UniProtKB:Q9ES40}; Multi-pass membrane

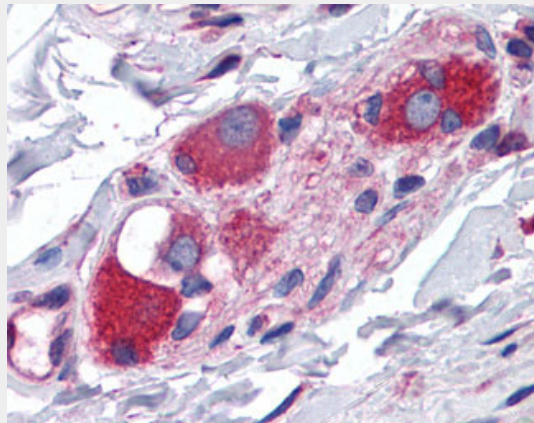
protein. Cell membrane {ECO:0000250|UniProtKB:Q9ES40}; Multi-pass membrane protein. Cytoplasm {ECO:0000250|UniProtKB:Q9ES40}. Cytoplasm, cytoskeleton {ECO:0000250|UniProtKB:Q9ES40}. Note=Also exists as a soluble form in the cytoplasm. Associated with microtubules {ECO:0000250|UniProtKB:Q9ES40}

ARL6IP5 Antibody (C-Terminus) - Protocols

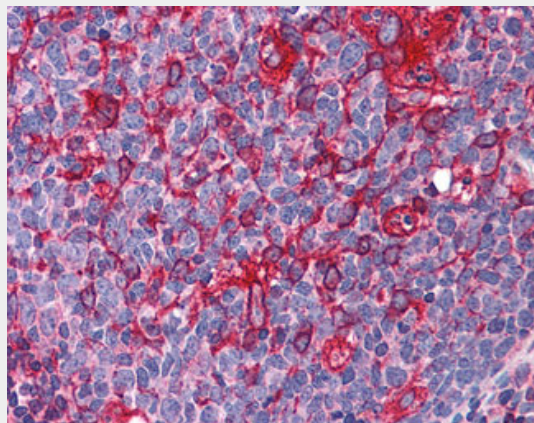
Provided below are standard protocols that you may find useful for product applications.

- [Western Blot](#)
- [Blocking Peptides](#)
- [Dot Blot](#)
- [Immunohistochemistry](#)
- [Immunofluorescence](#)
- [Immunoprecipitation](#)
- [Flow Cytometry](#)
- [Cell Culture](#)

ARL6IP5 Antibody (C-Terminus) - Images



Anti-ARL6IP5 / JWA antibody IHC of human small intestine, submucosal plexus.



Anti-ARL6IP5 / JWA antibody IHC of human tonsil.

ARL6IP5 Antibody (C-Terminus) - Background

Regulates intracellular concentrations of taurine and glutamate. Negatively modulates

SLC1A1/EAAC1 glutamate transport activity by decreasing its affinity for glutamate. May be involved in membrane traffic (By similarity).

ARL6IP5 Antibody (C-Terminus) - References

Ikemoto M.J., et al. NeuroReport 13:2079-2084(2002).

Schwenker M., et al. FEBS Lett. 579:1751-1758(2005).

Ikeda A., et al. Submitted (MAY-1998) to the EMBL/GenBank/DDBJ databases.

Zhou J.W., et al. Submitted (JUN-1998) to the EMBL/GenBank/DDBJ databases.

Zhang X.N., et al. Submitted (DEC-1998) to the EMBL/GenBank/DDBJ databases.