

**ST14 / Matriptase Antibody (aa10-59)**  
**Rabbit Polyclonal Antibody**  
**Catalog # ALS13681**

**Specification**

---

**ST14 / Matriptase Antibody (aa10-59) - Product Information**

Application	IF, WB, IHC
Primary Accession	<a href="#">O9Y5Y6</a>
Reactivity	Human
Host	Rabbit
Clonality	Polyclonal
Calculated MW	95kDa KDa

**ST14 / Matriptase Antibody (aa10-59) - Additional Information**

**Gene ID** 6768

**Other Names**

Suppressor of tumorigenicity 14 protein, 3.4.21.109, Matriptase, Membrane-type serine protease 1, MT-SP1, Prostamin, Serine protease 14, Serine protease TADG-15, Tumor-associated differentially-expressed gene 15 protein, ST14, PRSS14, SNC19, TADG15

**Target/Specificity**

ST14 Antibody detects endogenous levels of total ST14 protein.

**Reconstitution & Storage**

Store at -20°C for up to one year.

**Precautions**

ST14 / Matriptase Antibody (aa10-59) is for research use only and not for use in diagnostic or therapeutic procedures.

**ST14 / Matriptase Antibody (aa10-59) - Protein Information**

**Name** ST14

**Synonyms** PRSS14, SNC19, TADG15

**Function**

Exhibits trypsin-like activity as defined by cleavage of synthetic substrates with Arg or Lys as the P1 site (PubMed: [10373424](http://www.uniprot.org/citations/10373424)). Involved in the terminal differentiation of keratinocytes through prostaticin (PRSS8) activation and filaggrin (FLG) processing (PubMed: [18843291](http://www.uniprot.org/citations/18843291)). Proteolytically cleaves and therefore activates TMPRSS13 (PubMed: [28710277](http://www.uniprot.org/citations/28710277)).

**Cellular Location**

Membrane; Single-pass type II membrane protein

**Volume**

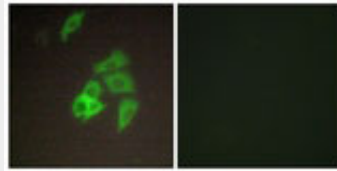
50  $\mu$ l

**ST14 / Matriptase Antibody (aa10-59) - Protocols**

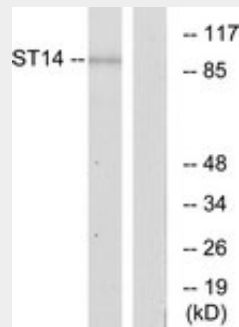
Provided below are standard protocols that you may find useful for product applications.

- [Western Blot](#)
- [Blocking Peptides](#)
- [Dot Blot](#)
- [Immunohistochemistry](#)
- [Immunofluorescence](#)
- [Immunoprecipitation](#)
- [Flow Cytometry](#)
- [Cell Culture](#)

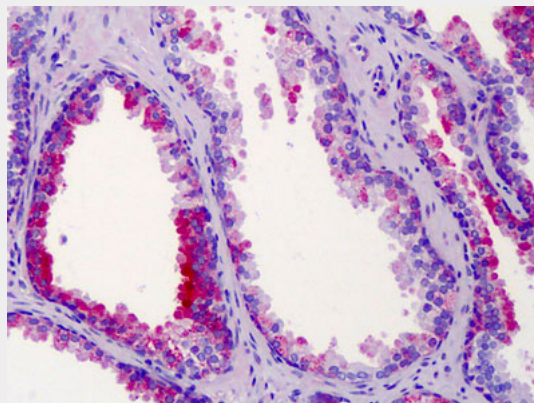
**ST14 / Matriptase Antibody (aa10-59) - Images**



Immunofluorescence of A549 cells, using ST14 Antibody.



Western blot of extracts from A549 cells, using ST14 Antibody.



Anti-ST14 / Matriptase antibody IHC of human prostate.

**ST14 / Matriptase Antibody (aa10-59) - Background**

Degrades extracellular matrix. Proposed to play a role in breast cancer invasion and metastasis. Exhibits trypsin-like activity as defined by cleavage of synthetic substrates with Arg or Lys as the P1 site. Involved in the terminal differentiation of keratinocytes through prostaticin (PRSS8) activation and filaggrin (FLG) processing.

**ST14 / Matriptase Antibody (aa10-59) - References**

Lin C.Y., et al. J. Biol. Chem. 274:18231-18236(1999).  
Takeuchi T., et al. Proc. Natl. Acad. Sci. U.S.A. 96:11054-11061(1999).  
Yamaguchi N., et al. Submitted (JUL-1999) to the EMBL/GenBank/DDBJ databases.  
Tanimoto H., et al. Submitted (APR-1998) to the EMBL/GenBank/DDBJ databases.  
Cao J., et al. Submitted (JUN-2000) to the EMBL/GenBank/DDBJ databases.