

**BIRC3 / cIAP2 Antibody**  
**Rabbit Polyclonal Antibody**  
**Catalog # ALS13666**

**Specification**

---

**BIRC3 / cIAP2 Antibody - Product Information**

Application	<b>WB, IHC</b>
Primary Accession	<a href="#">O13489</a>
Reactivity	<b>Human</b>
Host	<b>Rabbit</b>
Clonality	<b>Polyclonal</b>
Calculated MW	<b>68kDa KDa</b>

**BIRC3 / cIAP2 Antibody - Additional Information**

**Gene ID** 330

**Other Names**

Baculoviral IAP repeat-containing protein 3, 6.3.2.-, Apoptosis inhibitor 2, API2, C-IAP2, IAP homolog C, Inhibitor of apoptosis protein 1, IAP-1, hIAP-1, hIAP1, RING finger protein 49, TNFR2-TRAF-signaling complex protein 1, BIRC3, API2, IAP1, MIHC, RNF49

**Target/Specificity**

Human cIAP2. Predicted cross-reactivity based on amino acid sequence homology: bovine (84%).

**Reconstitution & Storage**

Aliquot and store at -20°C. Minimize freezing and thawing.

**Precautions**

BIRC3 / cIAP2 Antibody is for research use only and not for use in diagnostic or therapeutic procedures.

**BIRC3 / cIAP2 Antibody - Protein Information**

**Name** BIRC3

**Synonyms** API2, MIHC, RNF49

**Function**

Multi-functional protein which regulates not only caspases and apoptosis, but also modulates inflammatory signaling and immunity, mitogenic kinase signaling and cell proliferation, as well as cell invasion and metastasis. Acts as an E3 ubiquitin-protein ligase regulating NF-kappa-B signaling and regulates both canonical and non- canonical NF-kappa-B signaling by acting in opposite directions: acts as a positive regulator of the canonical pathway and suppresses constitutive activation of non-canonical NF-kappa-B signaling. The target proteins for its E3 ubiquitin-protein ligase activity include: RIPK1, RIPK2, RIPK3, RIPK4, CASP3, CASP7, CASP8, IKBKE, TRAF1, and BCL10. Acts as an important regulator of innate immune signaling via regulation of Toll-like receptors (TLRs), Nodlike receptors (NLRs) and RIG-I like receptors (RLRs), collectively referred to

as pattern recognition receptors (PRRs). Protects cells from spontaneous formation of the ripoptosome, a large multi-protein complex that has the capability to kill cancer cells in a caspase-dependent and caspase-independent manner. Suppresses ripoptosome formation by ubiquitinating RIPK1 and CASP8.

#### Cellular Location

Cytoplasm. Nucleus

#### Tissue Location

Highly expressed in fetal lung, and kidney. In the adult, expression is mainly seen in lymphoid tissues, including spleen, thymus and peripheral blood lymphocytes

#### Volume

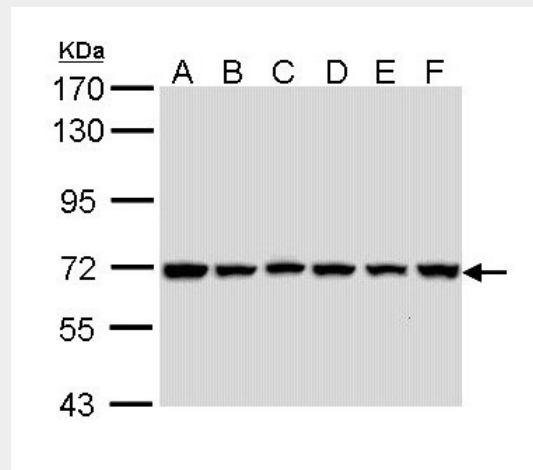
50  $\mu$ l

### BIRC3 / cIAP2 Antibody - Protocols

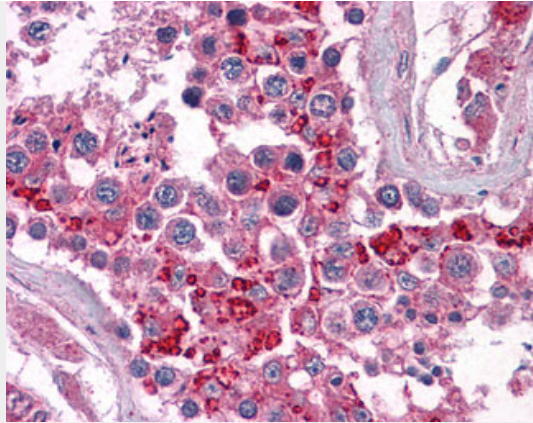
Provided below are standard protocols that you may find useful for product applications.

- [Western Blot](#)
- [Blocking Peptides](#)
- [Dot Blot](#)
- [Immunohistochemistry](#)
- [Immunofluorescence](#)
- [Immunoprecipitation](#)
- [Flow Cytometry](#)
- [Cell Culture](#)

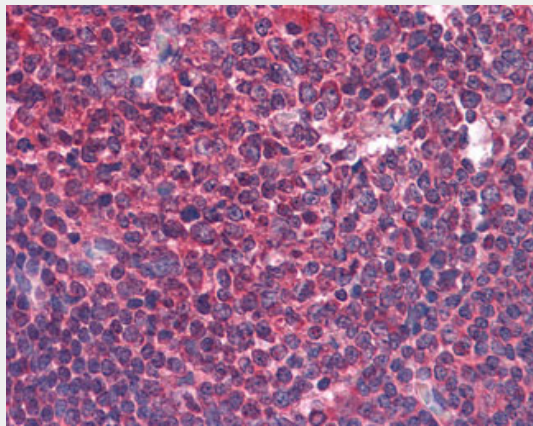
### BIRC3 / cIAP2 Antibody - Images



Sample (30 ug of whole cell lysate).



Anti-clAP2 antibody IHC of human testis.



Anti-clAP2 antibody IHC of human tonsil.

### **BIRC3 / clAP2 Antibody - Background**

Multi-functional protein which regulates not only caspases and apoptosis, but also modulates inflammatory signaling and immunity, mitogenic kinase signaling and cell proliferation, as well as cell invasion and metastasis. Acts as an E3 ubiquitin- protein ligase regulating NF-kappa-B signaling and regulates both canonical and non-canonical NF-kappa-B signaling by acting in opposite directions: acts as a positive regulator of the canonical pathway and suppresses constitutive activation of non-canonical NF-kappa-B signaling. The target proteins for its E3 ubiquitin- protein ligase activity include: RIPK1, RIPK2, RIPK3, RIPK4, CASP3, CASP7, CASP8, IKBKE, TRAF1, and BCL10. Acts as an important regulator of innate immune signaling via regulation of Toll-like receptors (TLRs), Nodlike receptors (NLRs) and RIG-I like receptors (RLRs), collectively referred to as pattern recognition receptors (PRRs). Protects cells from spontaneous formation of the ripoptosome, a large multi-protein complex that has the capability to kill cancer cells in a caspase-dependent and caspase- independent manner. Suppresses ripoptosome formation by ubiquitinating RIPK1 and CASP8.

### **BIRC3 / clAP2 Antibody - References**

- Rothe M.,et al.Cell 83:1243-1252(1995).
- Liston P.,et al.Nature 379:349-353(1996).
- Uren A.G.,et al.Proc. Natl. Acad. Sci. U.S.A. 93:4974-4978(1996).
- Horrevoets A.J.G.,et al.Blood 93:3418-3431(1999).
- Baens M.,et al.Genes Chromosomes Cancer 29:281-291(2000).